

CASE REPORT

Open Access

Recurrent Tako-Tsubo cardiomyopathy (TTC) in a pre-menopausal woman: late sequelae of a traumatic event?

Jochen Hefner^{1*}, Herbert Csef¹, Stefan Frantz^{2,3}, Nina Glatter⁴ and Bodo Warrings⁴

Abstract

Background: “Tako-Tsubo cardiomyopathy” (TTC) is a syndrome characterized by left ventricular (LV) wall motion abnormalities, usually without coronary artery disease, mimicking the diagnosis of acute coronary syndrome. It most often affects post-menopausal women and TTC tends to run a benign course with very low rates of recurrence, complications or mortality. The condition is also called “stress-induced cardiomyopathy” because acute physical or emotional stress appears to be frequently related to its onset. The pathogenic role of premorbid or comorbid psychiatric illnesses has been discussed controversially. For the first time, we present a case of fourfold recurrent TTC with severe complications in a pre-menopausal woman. Furthermore, a long history of flaring posttraumatic stress symptoms anteceded the first event.

Case presentation: A 43-year old, pre-menopausal Caucasian woman was hospitalized with symptoms of acute coronary syndrome. Clinical examination revealed hypokinetic wall motion in the apical ventricular region with no signs of coronary artery disease and diagnosis of TTC was established. She experienced recurrence three times within the following ten months, which led to thrombembolism and myocardial scarring among others. The circumstances of chronic distress were striking. 16 years ago she miscarried after having removed a myoma according to her doctor’s suggestion. Since then, she has suffered from symptoms of posttraumatic distress which peaked annually at the day of abortion. Chronic distress became even more pronounced after the premature birth of a daughter some years later. The first event of TTC occurred after a family dispute about parenting.

Conclusion: This is the first case report of fourfold TTC in a pre-menopausal woman. From somatic perspectives, the course of the disease with recurrences and complications underlines the fact that TTC is not entirely benign. Furthermore, it is the first case report of long lasting symptoms of traumatic stress anteceding TTC. Close connections between adrenergic signaling and late onset of clinical stress symptoms are well known in the psychopathology of traumatization. Although larger clinical trials are needed to elucidate possible interactions of premorbid psychiatric illnesses and TTC, cardiologists should be vigilant especially in cases of recurrent TTC.

Keywords: Recurrent Tako-Tsubo cardiomyopathy, Chronic distress, Gene-environment interaction, Comprehensive psychosomatic assessment

Background

Tako-Tsubo cardiomyopathy is a syndrome first described by Sato et al. in 1991 [1] consisting of transient wall motion abnormalities most often involving the apical ventricle. Abnormalities of the electrocardiogram (ECG) and myocardial enzyme release may mimic acute coronary

syndrome (ACS) in the angiographic absence of coronary artery disease [2]. The estimated prevalence is 2.5% in patients with ACS and post-menopausal women are most often affected [2,3]. Usually, TTC subsides rapidly without somatic complications [4]. But a growing number of recent reports demonstrate that TTC is not entirely benign [5,6]. For example, prolongation of the QT-interval is a well known finding in patients with acute TTC [7]. In a subgroup of patients, the severe prolongation of the QT-interval (QTc > 500 ms) may be a marker for the risk of sudden death [7]. Furthermore, in patients with pre-

* Correspondence: hefner_j@ukw.de

¹Section of Psychosomatic Medicine and Psychotherapy, Department of Internal Medicine II, Julius-Maximilian-University of Wuerzburg, Oberduerrbacher Str. 6, D- 97080 Wuerzburg, Germany
Full list of author information is available at the end of the article

existing long QT syndrome or concomitant psychiatric diseases and respective medication, TTC may lead to lethal arrhythmias [8]. The in-hospital mortality rate is 1.1% and incidence of recurrence is recently reported to be 2.9 – 10% [4,9,10]. Left ventricular thrombus occurs in about 5% of patients, 1.6% suffer from nonfatal cardioembolic outcomes [11]. In a subgroup of patients, cardiac MRI late enhancement may be present and last over time [12]. Late enhancement consistent with myocardial scarring has been reported sporadically and scars were not associated with adverse long term outcomes [5,13]. The exact pathomechanisms of TTC have not been elucidated [14,15]. Five different etiological mechanisms of TTC are discussed [16]. There is evidence for (1) multi-vessel epicardial spasms [17], (2) microcirculatory dysfunction [18], (3) obstruction of the left ventricular outflow [19] and (4) endocrine effects like increased vulnerability of postmenopausal women to hormonal and sympathetic stimuli [20]. Most pathophysiological models point to (5) elevated catecholamine levels in TTC patients which are higher compared to patients with myocardial infarction of corresponding Killip classes [21]. In latest reports, a hypothetical association of concurrent sympathetic over activity and vagal withdrawal has been proposed [22]. As acute episodes of physical or mental stress antecede an event in 7 out of 10 cases, stress induced peaks of catecholamine levels acting on differently localized and sensitized adrenergic receptors are thought of setting off an event [2,23-27]. In several recent reports, a high prevalence of anxiety and depression (21 – 66%) has been found in TTC patients [28-32]. Furthermore, anxiety and depression show effects on catecholamine metabolism. For example, levels of systemic and cardiac catecholamines are elevated and noradrenaline reuptake is reduced in depressed patients [33]. Additionally, noradrenaline responses to emotional stress are correlated with the extent of depressive symptoms [34]. In patients with panic disorders, epinephrine is released from the heart at rest and during spontaneous attacks [35]. Due to a norepinephrine transporter impairment, patients with panic disorder show a reduced uptake of nor-/epinephrine during transit to the heart [36,37]. In sum, the high prevalence of psychological illnesses in TTC patients led to the assumption that psychosocial stress concomitant with abnormalities in catecholamine signaling may be a risk factor whereas acute physical or emotional stress may ultimately trigger the event [28,30-32,38-40]. But the key question of cause and effect of psychiatric disorders in the context of TTC remains. Most of the studies could not determine the timeline of psychiatric disorders, and it may well be that the circumstances after the onset of TTC led to psychiatric comorbidity. In an unprecedented study, a high prevalence (56%) of chronic anxiety disorder anteceding TTC has been reported [32]. The authors

hypothesized that premorbid chronic psychiatric conditions may not only be risk factors for TTC but also for recurrences [32].

There is very little documentation of posttraumatic stress disorder (PTSD) in the context of TTC are very rare. At the same time, stressful events antecede the first onset of PTSD and symptoms are often chronic (>90%) and unremitting (>30%) [41]. Hyperarousal is one major clinical sign and the condition is closely linked to neuroendocrine alterations [42,43]. To our knowledge, there is only one case report of TTC in a postmenopausal patient with a 5 year history of PTSD [44]. The patient recovered fully and there was no report of recurrences or complications [44]. We present a unique case of recurrent TTC with complications in a pre-menopausal woman. Furthermore, it is the first description of chronic symptoms of posttraumatic stress peaking right before the first onset of TTC.

Case presentation

A 43 year-old Caucasian woman with a history of hypertension and nicotine abuse was hospitalized with acute onset of chest pain, nausea, and dizziness. Shortly before, she had a vigorous argument with her partner about child education. In the course of the altercation, she was accused to be “a bad mother”. The patient was overwhelmed by the allegations that instantly lead to perceptions of tension, fear and derealisation. At the hospital she appeared anxious with a blood pressure of 168/78 mmHg, a pulse of 78 bpm, shallow breathing and oxygen saturation of 96%. The physical exam and a chest x-ray showed normal findings. Tentative diagnosis was non-STEMI myocardial infarction as ECG was normal and Troponin T levels rose to 0.22 ng/ml. A coronary angiogram revealed no obstructive coronary artery disease or plaque rupture. A left ventriculography demonstrated hypokinetic apical, diaphragmal, and posterobasal segments (Figure 1). The diagnosis of Tako-Tsubo cardiomyopathy (TTC) was established and medication with beta blocker, ACE inhibitor, and aspirin was initiated. An echocardiography five days later showed normal wall movement and an ejection fraction of 72% on echocardiography. The patient was discharged after declining psycho-somatic support.

Six months later, weekly recurrent chest pain increased dramatically while reading a newspaper. Following hospitalization, all results of an examination were very similar to the first event and the diagnosis of recurrent TTC was established.

Nine months after the first cardiac event the patient was admitted to the emergency ward again after dyspnoea, chest pain, nausea, and vertigo had increased for several days. This time, the physical exam revealed rales in the right lung field. ECG showed T-wave inversions in leads V2-V3 (Figure 2), and Troponin T levels were at 0.14 ng/ml. Echocardiography demonstrated normal left

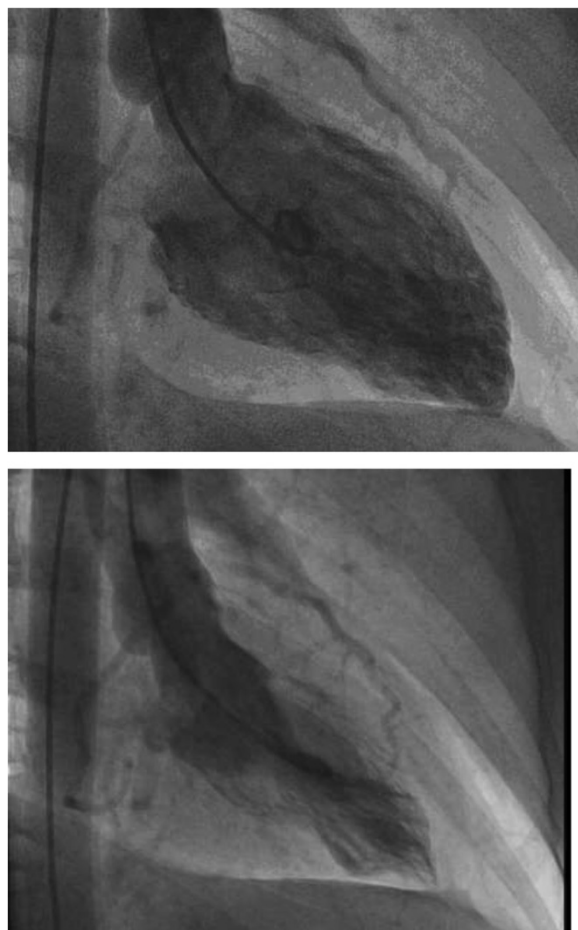


Figure 1 Left ventriculogram with hypokinetic segments (apical, diaphragmatic, and posterobasal) indicative of Tako-Tsubo Cardiomyopathy at first admission to the hospital (upper: diastole; lower: systole).

ventricle function (LVEF > 55%), akinesia of apical segments (septal, lateral, anterior, inferior), and a thrombus of 19 × 11 mm in the left ventricle. Despite administering an anticoagulant, thromboembolism to the right lower leg occurred and had to be surgically removed. After normalized echocardiographic and angiographic results, the patient was discharged a few days later. The last event of TTC emerged another four weeks later. The patient suffered from dyspnoea and pain of the chest and both arms. Physical examination was normal, ECG showed ST depression in leads V2-V4, Troponin T level was 0.06 ng/ml. Cardio-MRI revealed normal left ventricular function (LVEF = 70%) and hypokinetic wall movement of apical and lateral segments. Nonischemic patchy late enhancement was present in the apical, apical inferior septal and lateral regions. A month later late enhancement demonstrated inhomogeneous, inferior-apical transmural scar tissue

(Figure 3) which did not change significantly at another follow-up after 9 months. During the fourth event and due to a depressive syndrome, psychosomatic support was once again recommended. This time the patient agreed and for the first time, an antidepressant was administered. Because of latest reports of TTC associated with the use of serotonin and noradrenaline reuptake inhibitors, we selected Mirtazapine in order to avoid increased plasma catecholamine concentrations [45-47]. The psychosomatic history revealed several chronic stress factors. At the age of 27, the patient was pregnant (gestational age 14 weeks) and was advised to undergo surgery of the uterus due to a fast growing myoma. 4 months later fetal death was diagnosed and the pregnancy had to be interrupted shortly before calculated date of birth. This was experienced as a traumatic event by the patient. Since then, she suffered from recurrent solitary symptoms indicative of post traumatic stress disorder (occasional flashbacks, hyperarousal) which did not qualify for a diagnosis of PTSD according to diagnostic manuals. Additionally she described a prolonged grief reaction with rumination about the loss of her child, peaking annually in the month of the fetal death. Three years later, the patient gave birth to a healthy premature child. The patient experienced the incident as a distressing life-event as well and felt chronically concerned about her daughter. Therefore, final diagnoses were recurrent TTC, a chronic post-traumatic stress syndrome with solitary symptoms of PTSD, and a prolonged grief disorder with depressive anniversary reactions.

Conclusion

Recurrent TTC in pre-menopausal women is very unusual. On the somatic level, a total of four episodes with distinct complications like thromboembolism and scarring of the left ventricle are among the unique peculiarities of this case. Especially the last finding may challenge the diagnosis of TTC. But from our perspective, all symptoms point to unidentified pathomechanisms and to a broader clinical spectrum of TTC [5,13,14,48]. The chronic mental distress of our patient is another remarkable feature of our case. Retrospectively, she suffered from solitary posttraumatic symptoms accompanied by depressive anniversary reactions since the stillbirth 16 years ago. The first event of TTC occurred right after an intense argument about parenting. The psycho-somatic connections underlying TTC are far from clear [14,15,39]. In a case study published recently in this journal, Waldenborg et al. even proposed to avoid terms as “stress-induced cardiomyopathy” or “broken heart syndrome” for TTC [49]. They detected symptoms of acute posttraumatic stress in 9 out of 13 (69%) TTC patients (2 patients qualified for

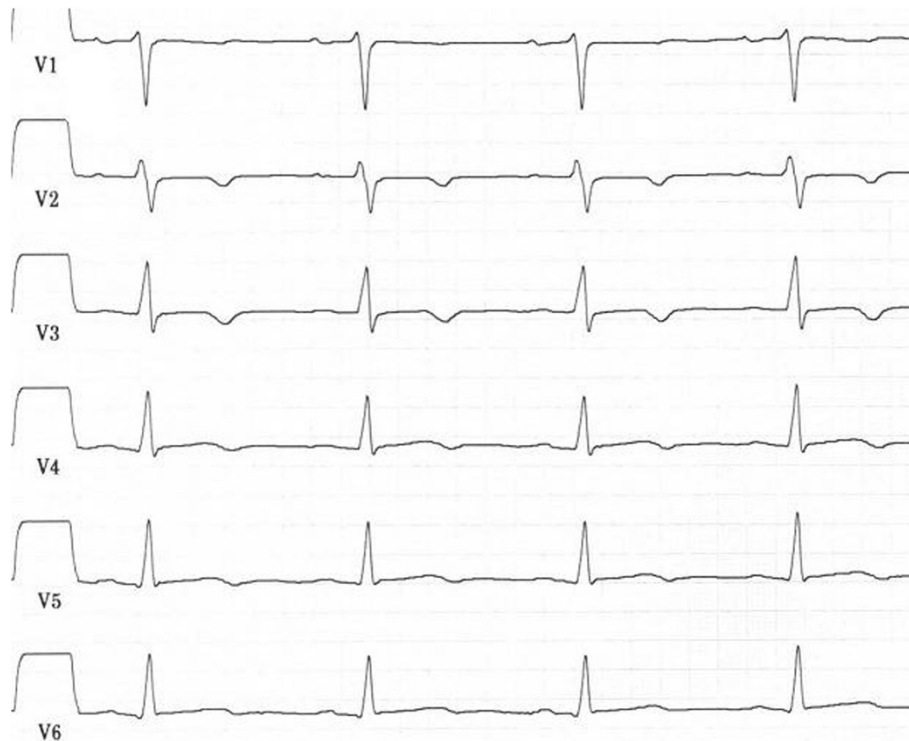


Figure 2 Electrocardiogram showing T-wave inversions in leads V2-V3 during the second event of Tako-Tsubo cardiomyopathy.

having PTSD) and similar numbers of acute distress can be found in patients with acute myocardial infarction [49]. From our point of view, it needs to be taken into account that only one patient had a history of mental illness (manic-depressive disorder), symptoms

of borderline or definite PTSD were absent before TTC and recurrences were not reported in a 3 month follow-up [49]. We are aware that the literature on TTC mainly consists of case reports and hypotheses about new pathomechanisms are therefore prone to valid objection. But in line with other researchers we believe that chronic distress may act as a risk factor of TTC and recurrences [32]. Specifically in PTSD, close interactions between trauma and adrenergic signaling do exist [41]. Even on the genetic level, traumatic events may lead to subthreshold endocrine modifications [50,51]. They in turn may facilitate repeating adrenergic surges many years later [50,51], even with recurrent cardiac consequences in pre-menopausal women. Despite the practical difficulties, prospective and much larger clinical trials are needed in order to test for these hypotheses. But we believe that already clinicians should be aware of possible connections to long preceding distress or traumatic events especially in cases of recurrent TTC.

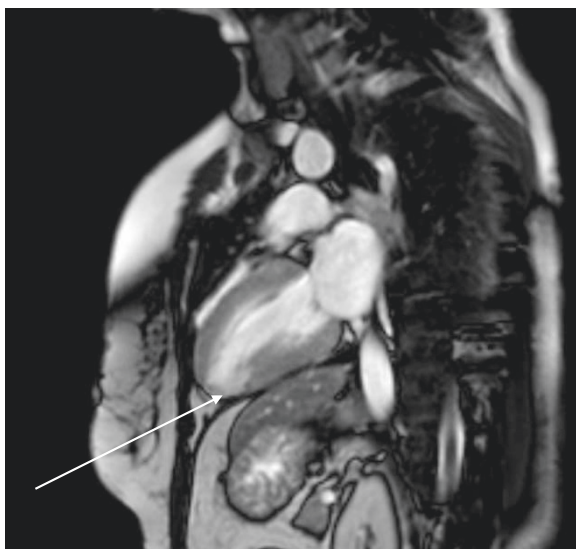


Figure 3 Cardiac magnetic resonance imaging after fourth event of TTC: transmurular scar tissue (inferior apical; white arrow).

Consent

Written informed consent was obtained from the patient for publication of this case report and any accompanying images. A copy of the written consent is available for review by the Editor of this journal.

Competing interests

The authors declare that they have no competing interests.

Authors' contributions

JH, SF, NG and BW gathered patient data. HC, SF, NG and BW treated the patient. All authors contributed to the conception of the report. JH wrote the report and HC, SF, NG and BW assisted with critical revision. All authors gave their final acceptance to the submission of this report. All authors read and approved the final manuscript.

Author details

¹Section of Psychosomatic Medicine and Psychotherapy, Department of Internal Medicine II, Julius-Maximilian-University of Wuerzburg, Oberduerrbacher Str. 6, D- 97080 Wuerzburg, Germany. ²Unit of Cardiology, Department of Internal Medicine I, Julius-Maximilian-University of Wuerzburg, Wuerzburg, Germany. ³Comprehensive Heart Failure Center, Julius-Maximilian-University of Wuerzburg, Wuerzburg, Germany. ⁴Department of Psychiatry, Psychosomatics and Psychotherapy, Julius-Maximilian-University of Wuerzburg, Wuerzburg, Germany.

Received: 29 September 2014 Accepted: 8 January 2015

Published: 19 January 2015

References

- Sato H, Tateishi H, Uchida T, Dote K, Ishihara M. Stunned Myocardium with specific (tsubo-type) Left Ventriculographic Configuration due to Multivessel Spasm. In: Kodama K, Haze K, Hori M, editors. *Clinical Aspects of Myocardial Injury: From Ischemia to Heart Failure*. Tokyo: Kagakuhyouronsya Co; 1990. p. 56–64.
- Bossone E, Savarese G, Ferrara F, Citro R, Mosca S, Musella F, et al. Takotsubo cardiomyopathy: overview. *Heart Fail Clin*. 2013;9:249–66.
- Mansencal N, Auvert B, N'Guetta R, Esteve JB, Zarca K, Perrot S, et al. Prospective assessment of incidence of Tako-Tsubo cardiomyopathy in a very large urban agglomeration. *Int J Cardiol*. 2013;168:2791–5.
- Gianni M, Dentali F, Grandi AM, Sumner G, Hiralal R, Lonn E. Apical ballooning syndrome or takotsubo cardiomyopathy: a systematic review. *Eur Heart J*. 2006;27:1523–9.
- Sharkey SW, Windenburg DC, Lesser JR, Maron MS, Hauser RG, Lesser JN, et al. Natural history and expansive clinical profile of stress (tako-tsubo) cardiomyopathy. *J Am Coll Cardiol*. 2010;55:333–41.
- Singh K, Carson K, Usmani Z, Sawhney G, Shah R, Horowitz J. Systematic review and meta-analysis of incidence and correlates of recurrence of takotsubo cardiomyopathy. *Int J Cardiol*. 2014;174:696–701.
- Behr ER, Mahida S. Takotsubo cardiomyopathy and the long-QT syndrome: an insult to repolarization reserve. *Europace*. 2009;11:697–700.
- Rotondi F, Manganelli F, Lanzillo T, Candelmo F, Lorenzo ED, Marino L, et al. Tako-tsubo cardiomyopathy complicated by recurrent torsade de pointes in a patient with anorexia nervosa. *Intern Med*. 2010;49:1133–7.
- Elesber AA, Prasad A, Lennon RJ, Wright RS, Lerman A, Rihal CS. Four-year recurrence rate and prognosis of the apical ballooning syndrome. *J Am Coll Cardiol*. 2007;50:448–52.
- Summers MR, Prasad A. Takotsubo cardiomyopathy: definition and clinical profile. *Heart Fail Clin*. 2013;9:111–22.
- de Gregorio C. Cardioembolic outcomes in stress-related cardiomyopathy complicated by ventricular thrombus: a systematic review of 26 clinical studies. *Int J Cardiol*. 2010;141:11–7.
- Naruse Y, Sato A, Kasahara K, Makino K, Sano M, Takeuchi Y, et al. The clinical impact of late gadolinium enhancement in Takotsubo cardiomyopathy: serial analysis of cardiovascular magnetic resonance images. *J Cardiovasc Magn Reson*. 2011;13:67.
- Bellera MN, Ortiz JT, Caralt MT, Perez-Rodon J, Mercader J, Fernandez-Gomez C, et al. Magnetic resonance reveals long-term sequelae of apical ballooning syndrome. *Int J Cardiol*. 2010;139:25–31.
- Ghadri JR, Ruschitzka F, Luscher TF, Templin C. Takotsubo cardiomyopathy: still much more to learn. *Heart*. 2014;100:1804–12.
- Tranter MH, Wright PT, Sikkil MB, Lyon AR. Takotsubo cardiomyopathy: the pathophysiology. *Heart Fail Clin*. 2013;9:187–96.
- Maldonado JR, Pajouhi P, Witteles R. Broken heart syndrome (Takotsubo cardiomyopathy) triggered by acute mania: a review and case report. *Psychosomatics*. 2013;54:74–9.
- Pilgrim TM, Wyss TR. Takotsubo cardiomyopathy or transient left ventricular apical ballooning syndrome: A systematic review. *Int J Cardiol*. 2008;124:283–92.
- Bybee KA, Prasad A, Barsness GW, Lerman A, Jaffe AS, Murphy JG, et al. Clinical characteristics and thrombolysis in myocardial infarction frame counts in women with transient left ventricular apical ballooning syndrome. *Am J Cardiol*. 2004;94:343–6.
- El Mahmoud R, Mansencal N, Pilliere R, Leyer F, Abbou N, Michaud P, et al. Prevalence and characteristics of left ventricular outflow tract obstruction in Tako-Tsubo syndrome. *Am Heart J*. 2008;156:543–8.
- Ueyama T, Kasamatsu K, Hano T, Tsuruo Y, Ishikura F. Catecholamines and estrogen are involved in the pathogenesis of emotional stress-induced acute heart attack. *Ann N Y Acad Sci*. 2008;1148:479–85.
- Wittstein IS, Thiemann DR, Lima JA, Baughman KL, Schulman SP, Gerstenblith G, et al. Neurohumoral features of myocardial stunning due to sudden emotional stress. *N Engl J Med*. 2005;352:539–48.
- Mohammad M, Patel AK, Koirala A, Asirvatham SJ. Tako-tsubo cardiomyopathy following colonoscopy: insights on pathogenesis. *Int J Cardiol*. 2011;147:e46–49.
- Nef HM, Mollmann H, Hilpert P, Masseli F, Kostin S, Troidl C, et al. Sympathoadrenergic overstimulation in Tako-Tsubo cardiomyopathy triggered by physical and emotional stress. *Int J Cardiol*. 2008;130:266–8.
- Bybee KA, Kara T, Prasad A, Lerman A, Barsness GW, Wright RS, et al. Systematic review: transient left ventricular apical ballooning: a syndrome that mimics ST-segment elevation myocardial infarction. *Ann Intern Med*. 2004;141:858–65.
- Akashi YJ, Musha H, Kida K, Itoh K, Inoue K, Kawasaki K, et al. Reversible ventricular dysfunction takotsubo cardiomyopathy. *Eur J Heart Fail*. 2005;7:1171–6.
- Eitel I, von Knobelsdorff-Brenkenhoff F, Bernhardt P, Carbone I, Muellerleile K, Aldrovandi A, et al. Clinical characteristics and cardiovascular magnetic resonance findings in stress (takotsubo) cardiomyopathy. *JAMA*. 2011;306:277–86.
- Tsuchihashi K, Ueshima K, Uchida T, Oh-mura N, Kimura K, Owa M, et al. Transient left ventricular apical ballooning without coronary artery stenosis: a novel heart syndrome mimicking acute myocardial infarction. *Angina Pectoris-Myocardial Infarction Investigations in Japan*. *J Am Coll Cardiol*. 2001;38:11–8.
- Mudd JO, Kass DA. Reversing chronic remodeling in heart failure. *Expert Rev Cardiovasc Ther*. 2007;5:585–98.
- Regnante RA, Zuzek RW, Weinsier SB, Latif SR, Linsky RA, Ahmed HN, et al. Clinical characteristics and four-year outcomes of patients in the Rhode Island Takotsubo Cardiomyopathy Registry. *Am J Cardiol*. 2009;103:1015–9.
- Vidi V, Rajesh V, Singh PP, Mukherjee JT, Lago RM, Venesy DM, et al. Clinical characteristics of tako-tsubo cardiomyopathy. *Am J Cardiol*. 2009;104:578–82.
- Nguyen SB, Nugent K, Otahbachi M, Roosritong C, Kumar A, Meyerrose G, et al. Transient left ventricular apical ballooning syndrome. *J Invest Med*. 2007;55:S256.
- Summers MR, Lennon RJ, Prasad A. Pre-morbid psychiatric and cardiovascular diseases in apical ballooning syndrome (tako-tsubo/stress-induced cardiomyopathy): potential pre-disposing factors? *J Am Coll Cardiol*. 2010;55:700–1.
- Barton DA, Dawood T, Lambert EA, Esler MD, Haikerwal D, Brenchley C, et al. Sympathetic activity in major depressive disorder: identifying those at increased cardiac risk? *J Hypertens*. 2007;25:2117–24.
- Mausbach BT, Dimsdale JE, Ziegler MG, Mills PJ, Ancoli-Israel S, Patterson TL, et al. Depressive symptoms predict norepinephrine response to a psychological stressor task in Alzheimer's caregivers. *Psychosom Med*. 2005;67:638–42.
- Wilkinson DJ, Thompson JM, Lambert GW, Jennings GL, Schwarz RG, Jefferys D, et al. Sympathetic activity in patients with panic disorder at rest, under laboratory mental stress, and during panic attacks. *Arch Gen Psychiatry*. 1998;55:511–20.
- Alvarenga ME, Richards JC, Lambert G, Esler MD. Psychophysiological mechanisms in panic disorder: a correlative analysis of noradrenaline spillover, neuronal noradrenaline reuptake, power spectral analysis of heart rate variability, and psychological variables. *Psychosom Med*. 2006;68:8–16.
- Shiouri T, Kojima-Maruyama M, Hosoki T, Kitamura H, Tanaka A, Yoshizawa M, et al. Dysfunctional baroreflex regulation of sympathetic nerve activity in remitted patients with panic disorder. A new methodological approach. *Eur Arch Psychiatry Clin Neurosci*. 2005;255:293–8.
- Nguyen SB, Cevik C, Otahbachi M, Kumar A, Jenkins LA, Nugent K. Do comorbid psychiatric disorders contribute to the pathogenesis of tako-tsubo syndrome? A review of pathogenesis. *Congest Heart Fail*. 2009;15:31–4.
- Goldfinger JZ, Nair A, Sealove BA. Brain-heart interaction in takotsubo cardiomyopathy. *Heart Fail Clin*. 2013;9:217–23.

40. Ziegelstein RC. Depression and tako-tsubo cardiomyopathy. *Am J Cardiol.* 2010;105:281–2.
41. Schnurr PP, Friedman MJ, Bernardy NC. Research on posttraumatic stress disorder: epidemiology, pathophysiology, and assessment. *J Clin Psychol.* 2002;58:877–89.
42. Gamo NJ, Arnsten AF. Molecular modulation of prefrontal cortex: rational development of treatments for psychiatric disorders. *Behav Neurosci.* 2011;125:282–96.
43. Yehuda R. Advances in understanding neuroendocrine alterations in PTSD and their therapeutic implications. *Ann N Y Acad Sci.* 2006;1071:137–66.
44. Primus C, Auer J. Atypical "mid-ventricular" Tako-tsubo cardiomyopathy in a patient suffering from posttraumatic stress disorder: A case report. *Wien Klin Wochenschr.* 2011;123:562–5.
45. Christoph M, Ebner B, Stolte D, Ibrahim K, Kolschmann S, Strasser RH, et al. Broken heart syndrome: Tako Tsubo cardiomyopathy associated with an overdose of the serotonin-norepinephrine reuptake inhibitor Venlafaxine. *Eur Neuropsychopharmacol.* 2010;20:594–7.
46. Rotondi F, Manganelli F, Carbone G, Stanco G. "Tako-tsubo" cardiomyopathy and duloxetine use. *South Med J.* 2011;104:345–7.
47. Neil CJ, Chong CR, Nguyen TH, Horowitz JD. Occurrence of Tako-Tsubo cardiomyopathy in association with ingestion of serotonin/noradrenaline reuptake inhibitors. *Heart Lung Circ.* 2012;21:203–5.
48. Pelliccia F, Greco C, Vitale C, Rosano G, Gaudio C, Kaski JC. Takotsubo Syndrome (Stress Cardiomyopathy): An Intriguing Clinical Condition in Search of Its Identity. *Am J Med.* 2014;127:699–704.
49. Waldenborg M, Soholat M, Kahari A, Emilsson K, Frobert O. Multidisciplinary assessment of tako tsubo cardiomyopathy: a prospective case study. *BMC Cardiovasc Disord.* 2011;11:14.
50. McGowan PO. Epigenomic mechanisms of early adversity and HPA dysfunction: considerations for PTSD Research. *Front Psychiatry.* 2013;4:110.
51. Mehta D, Binder EB. Gene x environment vulnerability factors for PTSD: the HPA-axis. *Neuropharmacology.* 2012;62:654–62.

doi:10.1186/1471-2261-15-3

Cite this article as: Hefner et al.: Recurrent Tako-Tsubo cardiomyopathy (TTC) in a pre-menopausal woman: late sequelae of a traumatic event? *BMC Cardiovascular Disorders* 2015 :3.

**Submit your next manuscript to BioMed Central
and take full advantage of:**

- Convenient online submission
- Thorough peer review
- No space constraints or color figure charges
- Immediate publication on acceptance
- Inclusion in PubMed, CAS, Scopus and Google Scholar
- Research which is freely available for redistribution

Submit your manuscript at
www.biomedcentral.com/submit

