

RESEARCH ARTICLE

Open Access

Meta-analysis of randomized controlled trials on the efficacy and safety of intracoronary administration of tirofiban for no-reflow phenomenon

Tao Qin¹, Lu Xie² and Meng-Hua Chen^{1*}

Abstract

Background: Currently, there is still a lack of an optimal treatment for no-reflow phenomenon (NR). The aim of this simple meta-analysis was to evaluate the efficacy and safety of intracoronary (IC) administration of tirofiban compared with other conventional drugs during percutaneous coronary intervention (PCI) for NR.

Methods: Systematic literature search was done from PubMed, EMBASE, Google Scholar, EBSCO, Springer and CNKI databases without language or time limitation. Randomized controlled trials were enrolled for analyzing if they investigated the treatment of IC administration of tirofiban versus other conventional drugs for NR.

Results: Ten studies with 702 patients were included. Significantly, the treatment of tirofiban was more effective in improving the thrombolysis in myocardial infarction (TIMI) flow (OR 0.24, 95% CI 0.15-0.37, $P < 0.00001$) and reducing major adverse cardiovascular events (MACE) (OR 0.09, 95% CI 0.05-0.18, $P < 0.00001$). There was a trend to increase the risk of bleeding, but the data of the result did not reach the statistical significance (OR 1.44, 95% CI 0.69-3.00, $P = 0.32$).

Conclusions: Tirofiban is more effective than conventional drugs for NR during PCI, but the potential risk of bleeding complication induced by tirofiban shouldn't be ignored during clinical practices.

Background

Currently, percutaneous coronary intervention (PCI) has become the most common strategy for acute coronary syndrome. No-reflow phenomenon (NR) is one of the serious complications of PCI, which could lead to poor prognosis [1-3].

The conventional pharmacological treatment for NR is intracoronary (IC) administration of vasodilators (for example, adenosine, verapamil, nitroglycerin, sodium nitroprusside, etc.) [4]. So far, there are some randomized controlled trials investigated the treatment of IC administration of tirofiban for NR. But compared with conventional drugs, the treatment of tirofiban has not been evaluated. Therefore, the aim of this article was to compare the efficacy and safety of IC administration of

tirofiban with conventional drugs for NR during PCI by performing a simple meta-analysis.

Methods

Search strategy

Completed randomized controlled trials that investigated the efficacy and safety of IC administration of tirofiban versus conventional drug for NR during PCI were sought out by searching the electronic databases, including PubMed, EMBASE, Google Scholar, EBSCO, Springer and CNKI. Separate search strategy was developed for each database using the following keywords: "no-reflow", "tirofiban", "glycoprotein α b/ β a inhibitors", "intracoronary", "randomized controlled trial" and "percutaneous coronary intervention". The search was performed without language or time limitation. The types of articles such as comments, letters and the works that were not original reports were excluded.

* Correspondence: cmhnn@sina.com

¹Institute of Cardiovascular Diseases, the First Affiliated Hospital of Guangxi, Medical University, Nanning, Guangxi, 530027, P. R. China

Full list of author information is available at the end of the article

Study selection

Study was considered eligible if it met the following criteria: (i) the patients with NR during PCI were enrolled, (ii) randomly designed patients to a strategy of IC administration, either tirofiban or one of the conventional drugs, (iii) reported at least on one of following outcomes: transformation of thrombolysis in myocardial infarction (TIMI) flow after treatment, major adverse cardiovascular events (MACE) and bleeding complication. Methodological quality of the enrolled studies was assessed in relation to randomization and concealment of allocation. Quality scale was used to assess the trials: (A) true randomization and allocation concealed, and (B) process of randomization not given and concealment of allocation unclear. This approach was recommended by the Cochrane Collaboration [5].

Data abstraction

The following information were extracted from the enrolled studies: (i) first author's last name, publication year, (ii) study design, including the type and dosage of the IC drugs, duration of treatment, number of patients and the follow up, (iii) data of endpoints.

Outcome events were based on the definitions used in the individual trial publications. All data were independently extracted by two investigators (TQ and LX). Results were compared, and disagreements were resolved by discussion with a third investigator (MHC).

Statistical analysis

Data were entered and analyzed using the Cochrane Collaboration Review Manager software (version 5.2). The data of outcomes were analyzed separately by indications (transformation of TIMI flow after treatment, MACE, bleeding complication). Odds ratios (OR) and 95% confidence intervals (CI) were calculated. Random-effects models were used since heterogeneity was expected among the trials. And for unifying the outcomes in forest plots, we analyzed the incidence of TIMI 0–2 flow transformation after IC treatment, which could also reflex the incidence of TIMI 3 flow, which was a signal of restoration of myocardial perfusion. An OR < 1 suggested a beneficial effect whilst an OR > 1 suggested a detrimental effect. Statistical significance was defined as a 2- sided p value < 0.05.

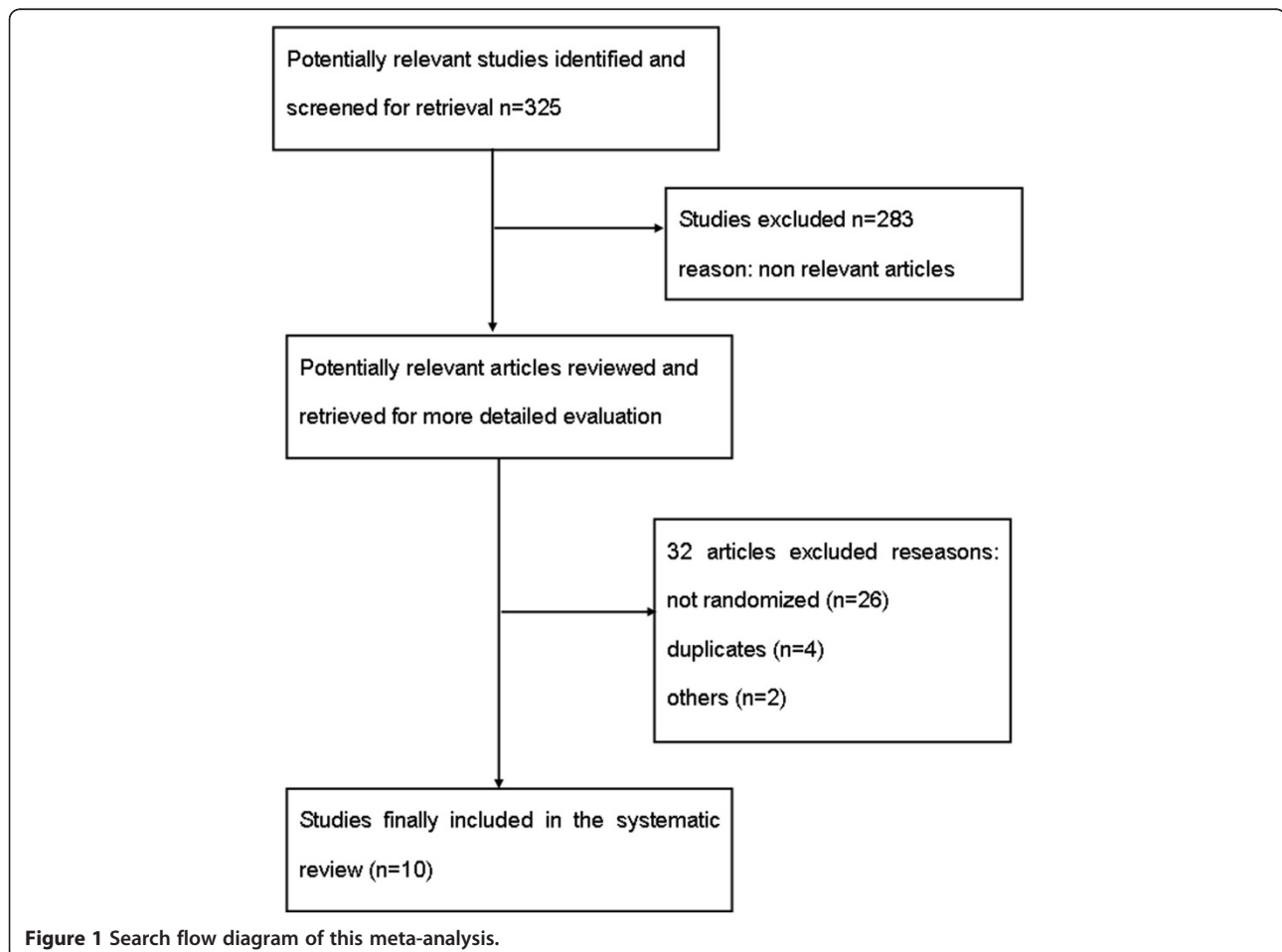


Figure 1 Search flow diagram of this meta-analysis.

Results

Search results

With separate search strategy in each database, the search yielded 325 articles that were potentially pertinent. Reviewing titles and abstracts to exclude irrelevant studies, case reports, editorial comments, and reviews, 42 studies were retrieved for further consideration. Of the 42 studies, 32 studies were finally excluded mainly because they only administrated tirofiban additionally compared with the parallel control group. Ten [6-15] completed randomized trials fulfilled all the inclusion criteria and included 702 patients (Figure 1).

Study characteristics

The enrolled studies' characteristics are presented in Table 1. The studies published from 2007 to 2012. Described each study's characteristic and analyzed the quality scale. All the trials mentioned randomization and the comparability of baseline were offered, but not mentioned the concealment of allocation. After the quality analyzing, all trials were evaluated B. In the control group, there were 4 trials administrated with nitroglycerin [6,9,10,12], 5 with verapamil [7,9,11,14,15] and 1 with sodium nitroprusside [13].

Quantitative data synthesis

According to the data analysis, all the enrolled trials (n = 702) investigated the transformation of TIMI flow after the IC pharmacological treatment and the results found

that tirofiban was more effective in improving the TIMI flow (OR 0.24, 95% CI 0.15-0.37, $P < 0.00001$, Figure 2). Furthermore, tirofiban significantly reduced the MACE (OR 0.09, 95% CI 0.05-0.18, $P < 0.00001$, Figure 3), but had a tendency to increase the risk of bleeding (OR 1.44, 95% CI 0.69-3.00, $P = 0.32$, Figure 4) in 6 of the 10 trials (n = 359) [6,9,10,12,13,15].

Specifically, we compared tirofiban with each kind of conventional drugs for a further analysis of the transformation of TIMI flow. And it also indicated that tirofiban had its benefit of improving the coronary flow for NR (OR 0.24, 95% CI 0.15-0.37, $P = 0.001$, Figure 5).

Discussion

NR could be defined as the persistence of reduced flow and regional myocardial dysfunction after the removal of an experimental epicardial coronary occlusion [16].

So far, the precise mechanisms of NR have not been fully clarified. The optimal therapy for NR is still being explored. Some studies [17-19] suggested that the dysfunction of coronary microcirculation perfusion was the central mechanism of NR. And it would not occur until the lesion of coronary microvascular endothelium to a certain extent. It was a dynamic and persistent procedure. Once the phenomenon occurred, the inflammation and lesion of coronary microvascular endothelium would be aggravated and the effect would sustain for weeks. A case report [20] showed that the phenomenon could be improved by taking appropriate intervention measures

Table 1 Study design of the included randomized controlled trials

Study	N(T/C)	Control group		Conventional drugs	Tirofiban	Endpoints§	Follow up	Quality*
		Asp	Cpg					
Chen2012	27/24	√	√	Nitroglycerin 200 µg within 3 mins then IV 0.15 µg/kg·min for 36-48 h	10 µg/kg within 3 mins then IV 0.15 µg/kg·min for 36-48 h	(1)(2)(3)	30d	B
Fu 2012	43/43	√	√	Verapamil 1 mg within 5 mins	10 µg/kg within 5 mins then IV 0.075 µg/kg·min for 24 h	(1)	-	B
Guan 2012	40/40	-	-	Verapamil 1 mg within 5 mins	10 µg/kg within 5 mins then IV 0.075 µg/kg·min for 24 h	(1)	-	B
He 2012	28/28	√	√	Nitroglycerin 200 µg within 3 mins	10 µg/kg within 3 mins then IV 0.15 µg/kg·min for 24-48 h	(1)(2)(3)	14d	B
Luan 2007	45/44	-	-	Nitroglycerin 200 µg within 3 mins	10 µg/kg within 3 mins	(1)(2)(3)	7d	B
Wang2012	48/34	√	√	Verapamil 200 µg within 15 mins	10 µg/kg within 5 mins then IV 0.15 µg/kg·min for 38 h	(1)	-	B
Wei 2009	26/20	√	√	Nitroglycerin 200 µg within 3 mins then IV 0.15 µg/kg·min for 36-48 h	10 µg/kg within 3 mins then IV 0.15 µg/kg·min for 36-48 h	(1)(2)(3)	30d	B
Wu 2012	36/36	√	√	Sodium nitroprusside 0.9 µg/kg within 3 mins	10 µg/kg within 3 mins then IV 0.15 µg/kg·min for 24 h	(1)(2)(3)	14d	B
Zhang 2010	46/49	√	√	Verapamil 1 mg within 5 mins	10 µg/kg within 5 mins then IV 0.075 µg/kg·min for 24 h	(1)	-	B
Zhang 2012	21/24	√	√	Verapamil 200 µg within 3 mins	10 µg/kg within 3 mins then IV 0.15 µg/kg·min for 36-48 h	(1)(2)(3)	30d	B

§ (1) transformation of TIMI flow, (2) MACE, (3) bleeding complication. *Quality scale: A, true randomization and allocation concealed; B, process of randomization not given and concealment of allocation unclear. Asp, aspirin; Cpg, clopidogrel.

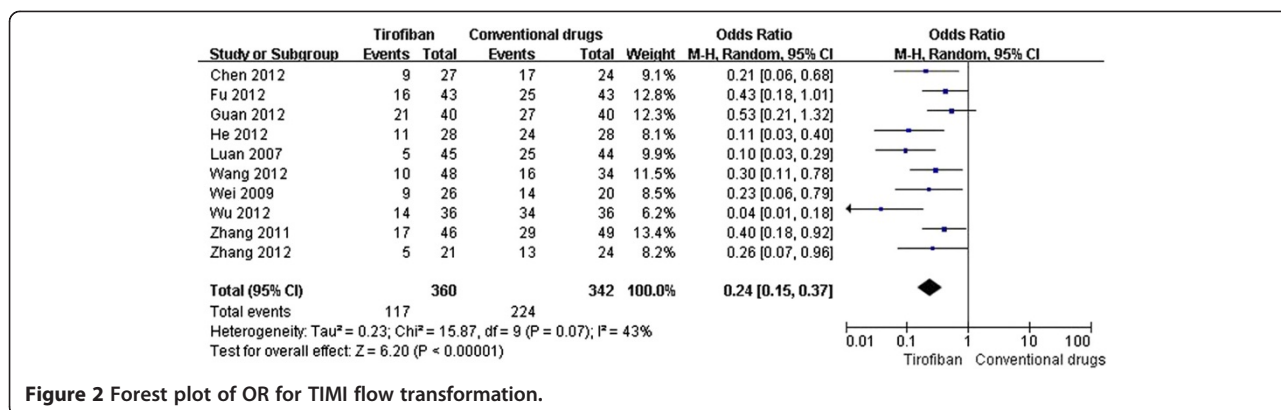


Figure 2 Forest plot of OR for TIMI flow transformation.

before the lesion. Restoration of myocardial perfusion rapidly could be achieved by removing the microvascular obstruction and recovering the antegrade coronary flow of occlusive vessel, and it has become a key of the treatment for NR [21].

For NR, the mechanism of conventional drugs was mainly for expanding the coronary vessel, which might be beneficial to allowing the formed microthrombus to get through the microvascular network and removing the coronary occlusion. On the basis of the mechanisms, conventional drugs could not inhibit the sustained thrombi caused by platelet aggregation when balloon was dilating, which limited the effect [22,23]. The effects of these vasodilators in patients with NR were contradictory and could not be sustained by large scale clinical evidence [24-29].

Platelet aggregation plays an important role in the formation of embolization. Glycoprotein IIb/IIIa inhibitors (GPI) block the final pathway of platelet aggregation, combine with the glycoprotein IIb/IIIa receptors selectively and inhibit the thrombinogen I competitively. And also, GPI could inhibit the activation, adhesion and aggregation of platelet. The pharmacological mechanisms of GPI were contributed to the formation of platelet thrombi, restoration the antegrade coronary flow of occlusive vessel and reducing the incidence of the ischemia event [30,31]. From the recent researches, GPI has its obvious advantages in inhibiting the formation

of platelet thrombus, but bleeding event was the main complication [31,32]. Tirofiban is one kind of GPI, which with high selectivity and short-acting pharmacological mechanism [33]. During PCI, IC administration of tirofiban might increase the local drug concentration and improve the coronary flow. Considering the particular mechanism, tirofiban selectively blocks the final pathway of the platelet aggregation, which might contribute to the improving TIMI flow. And the short half-life might relative to the reducing of MACE.

Also, the bleeding event needs to be considered. By analyzing the enrolled trials of this article, 9 of the 10 trials had the administration of tirofiban by intravenous (IV) infusion after PCI with some degrees. Chen and Wei administrated both group with IV infusion [6,12], while the other seven trials only with the tirofiban group [7-9,11-15]. Although it didn't reach the statistical significance, an increasing trend of bleeding was observed comparing with the conventional drugs. One of the possible explanations might be that IV infusion of tirofiban increased the drug concentration in the system and decreased the function of platelet which led to the bleeding complication. Kimmelstiel et al. [34] referred that the half-life of tirofiban was 2 hours, and the function of platelet could recover 89% of the baseline and the prothrombin time recovered completely after 2-4 hours of the drug withdrawal. In a study by Zhang WZ et al. [35] of IC administration tirofiban for NR, if the effect was

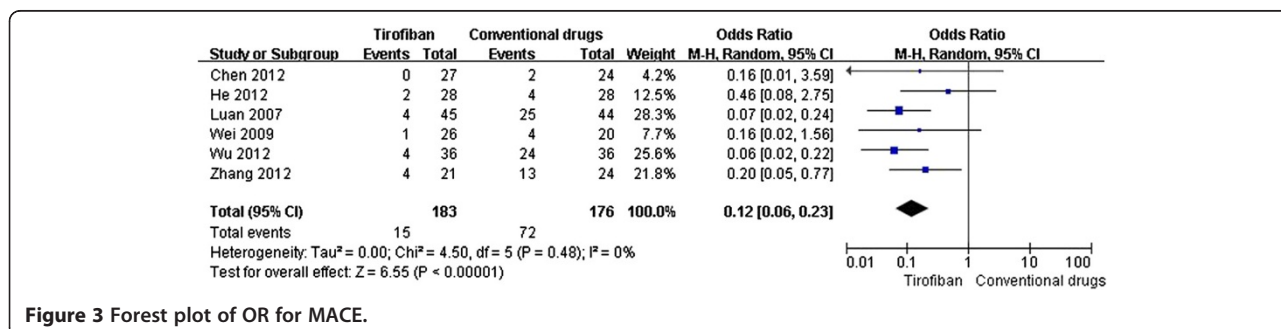


Figure 3 Forest plot of OR for MACE.

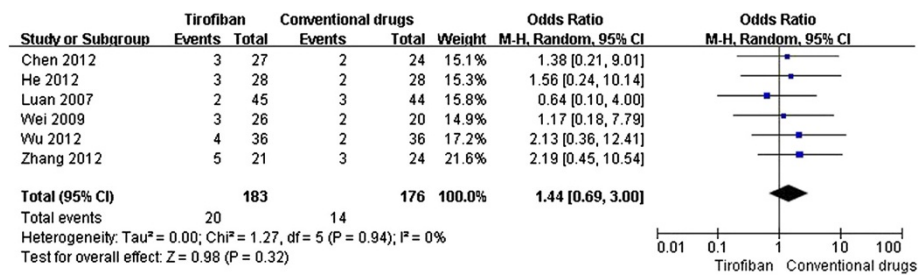


Figure 4 Forest plot of OR for the risk of bleeding complication.

not satisfied during the PCI, then continually IV infused for 24-hour post-operation could improve the antegrade coronary flow of occlusive vessel. But from a meta-analysis by Geeganage C et al. [36], it suggested that the additional IV administration of GPI increased the bleeding event. However, the administration of post-operative IV infusion of tirofiban for NR, whether or how it should be, needs to be confirmed by further clinical investigations.

Study limitations

Though TIMI is a classical indicator of reperfusion during PCI [37-39], it doesn't mean that TIMI 3 flow represents a normal myocardial perfusion [40]. In other words, myocardial blush grade (MBG) 0-1 might occur in the patients with TIMI 3 flow during PCI. It had been found that MBG was an independent predictor of

long-term mortality and could be used to describe the effectiveness of myocardial reperfusion [41]. Van't Hof et al. [42] proposed that the angiographic definition of successful reperfusion should include both TIMI 3 flow as well as MBG 2 or 3. Moreover, Stone et al. [43] suggested that MBG could be used to stratify prognosis of survival in high risk patients achieving TIMI 3 flow after intervention. Theoretically, MBG is superior to TIMI when assessing the myocardial perfusion during PCI. Unfortunately, we didn't use MBG as an indicator in the present study, because only one of the ten enrolled studies provided the data of TIMI as well as MBG in the comparison of tirofiban versus verapamil [7].

As all the enrolled trials' quality scales were B and with small sample data, the bias should not be ignored. Also, the condition of patients, the time and dosage of

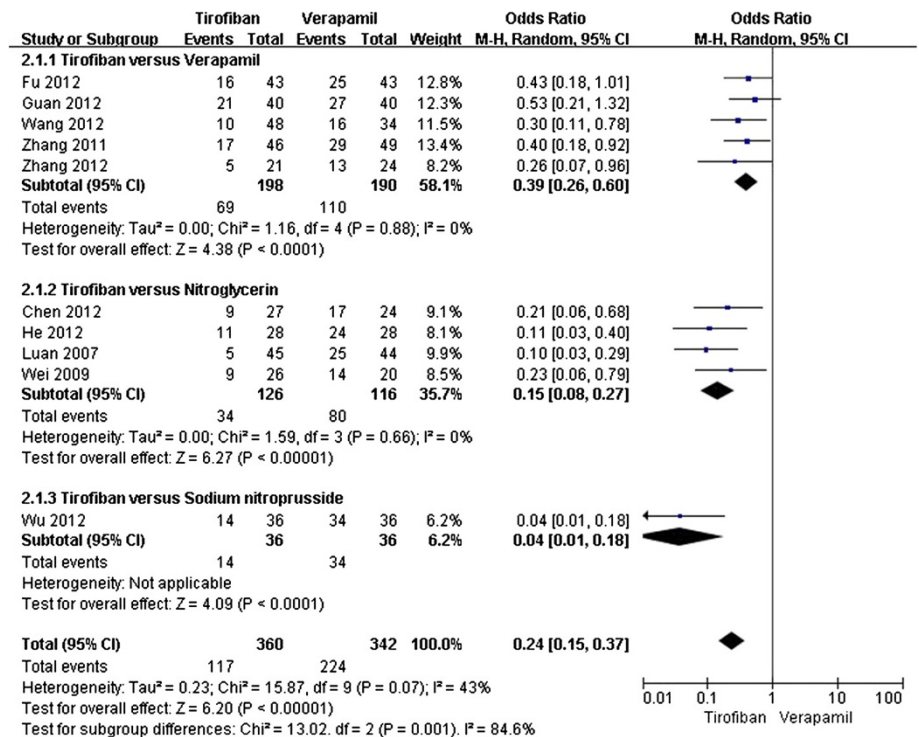


Figure 5 Forest plot of OR for TIMI, compared tirofiban with each kind of conventional drugs.

different administrations and the different selections of the conventional drugs might have influenced the outcomes. Therefore, it needs further powerful randomized trials to investigate the treatment.

Conclusions

The treatment of IC administration of tirofiban is more effective than the conventional drugs for NR, but the potential risk of bleeding complication induced by the drug shouldn't be ignored during clinical practices. From this meta-analysis, it suggested that the safety of IC administration of tirofiban for NR should be fully considered the individuation of patients and balanced the efficacy and the hazard.

Competing interests

The authors declare that they have no competing interests.

Authors' contributions

TQ conceived the study, participated in the design, collected the data, and drafted the manuscript. LX participated in the design, collected the data, performed statistical analyses and drafted the manuscript. MHC conceived the study, participated in the design, and helped to draft the manuscript. All authors read and approved the final manuscript.

Authors' information

Tao Qin and Lu Xie are co-first author.

Acknowledgements

There was no external funding source for this research.

Author details

¹Institute of Cardiovascular Diseases, the First Affiliated Hospital of Guangxi, Medical University, Nanning, Guangxi, 530027, P. R. China. ²Department of Physiology, School of Pre-Clinical Sciences, Guangxi Medical University, Nanning, Guangxi, 530027, P. R. China.

Received: 11 March 2013 Accepted: 28 August 2013

Published: 10 September 2013

References

1. Vallejo E, Pena D, Norono O, Ban Hayashi E, Gaspar J, Villavicencio R, Martinez Rios MA: **The slow-reflow phenomenon: its incidence and clinical characteristics in a series of cases.** *Arch Inst Cardiol Mex* 1998, **68**:247–252.
2. Morishima I, Sone T, Okumura K, Okumura K, Tsuboi H, Kondo J, Mukawa H, Matsui H, Toki Y, Ito T, Hayakawa T: **Angiographic slow-reflow phenomenon: as a predictor of adverse long term outcome in patients treated with percutaneous transluminal coronary angioplasty for first acute myocardial infarction.** *J Am Coll Cardiol* 2000, **36**:1202–1209.
3. Brosh D, Assali AR, Mager A, Porter A, Hasdai D, Teplitsky I, Rechavia E, Fuchs S, Battler A, Kornowski R: **Effect of no-reflow during primary percutaneous coronary intervention for acute myocardial infarction on six-month mortality.** *Am J Cardiol* 2007, **99**:442–445.
4. Ramjane K, Han L, Jin C: **The diagnosis and treatment of the no-reflow phenomenon in patients with myocardial infarction undergoing percutaneous coronary intervention.** *Exp Clin Cardiol* 2008, **13**:121–128.
5. Higgins JPT, Green S: *Cochrane handbook for systematic reviews of interventions.* London: Wiley Interscience; 2008.
6. Chen SF, Liu HM, Li YS: **Efficacy and safety of intracoronary tirofiban on no-reflow patients after PCI in acute coronary syndrome.** *Tianjin Pharm* 2012, **24**:18–20.
7. Fu W: **Effects of tirofiban in elder patients of acute myocardial infarction with no-reflow phenomenon during PCI.** *Chin J Gerontol* 2012, **8**:1565–1567.
8. Guan XS: **The clinical impact of tirofiban on slow flow or no-reflow of post-PCI in patients with acute myocardial infarction.** *Chin J of Med Guide* 2012, **14**:268,243.
9. He DM, Huang JZ: **The efficacy and safety of tirofiban for no-reflow phenomenon in acute coronary syndrome during PCI.** *Chin Community Doctors* 2012, **7**:56–57.
10. Luan B, Han YL, Jing QM, Wang SL, Ma YY, Wang G, Wang B: **Efficacy of intracoronary administration of tirofiban for no-reflow during emergency PCI.** *Shenyang Army Med* 2007, **20**:367–369.
11. Wang YP, Ding MX, Zhao SW: **Clinical observation of tirofiban treatment on no-flow phenomenon in patients with acute ST-elevation myocardial infarction during percutaneous coronary intervention.** *Tianjin Med J* 2012, **40**:159–160.
12. Wei L, Li XQ, Jin EZ, Wang XY: **Efficacy and safety of intracoronary tirofiban on no-ref low pati phenomenon after percutaneous coronary intervention.** *J Clin Cardiol (China)* 2011, **27**:25–29.
13. Wu J, Xu L, Du H, Wang YR: **Influence of tirofiban on no-reflow after percutaneous coronary intervention in patients with acute coronary syndrome.** *Chin J Evid Based Cardiovasc Med* 2012, **14**:131–133.
14. Zhang HY, Wang PX, Cao YJ, Wu ZG, Liu HS: **Clinical study of intracoronary injections of tirofiban in acute myocardial infarction patients with no reflow phenomenon after percutaneous coronary intervention.** *J Clin Cardiol (China)* 2011, **27**:25–29.
15. Zhang J, Jiang JG: **Effects of intracoronary injections of tirofiban in acute coronary syndrome patients with no reflow phenomenon after percutaneous coronary intervention.** *Anhui Med J* 2012, **2**:155–158.
16. Piana RN, Paik GY, Moscucci M, Cohen DJ, Gibson CM, Kugelmass AD, Carrozza JP Jr, Kuntz RE, Baim DS: **Incidence and treatment of 'no-reflow' after percutaneous coronary intervention.** *Circulation* 1994, **89**:2514–2518.
17. Niccoli G, Burzotta F, Galiuto L, Crea F: **Myocardial no-reflow in humans.** *J Am Coll Cardiol* 2009, **54**:281–292.
18. Chen YF, Yang YJ: **No-reflow phenomenon after percutaneous coronary intervention.** *Adv Cardiovasc Dis Jan* 2005, **26**:4–8.
19. Rittersma SZ, van der Wal AC, Koch KT, Piek JJ, Henriques JP, Mulder KJ, Ploegmakers JP, Meesterman M, de Winter RJ: **Plaque instability frequently occurs days or weeks before occlusive coronary thrombosis.** *Circulation* 2005, **111**:1160–1165.
20. Movahed MR, Butman SM: **The pathogenesis and treatment of no-reflow occurring during percutaneous coronary intervention.** *Cardiovasc Revasc Med* 2008, **9**:56–61.
21. Lee CH, Wong HB, Tan HC, Zhang JJ, Teo SG, Ong Low A, Sutandar A, Lim YT: **Impact of reversibility of no reflow phenomenon on 30-day mortality following percutaneous revascularization for acute myocardial infarction—insights from a 1,328 patient registry.** *J Interv Cardiol* 2005, **18**:261–266.
22. Pan W, Wang LF, Yu JH, Fan Y, Yang SS, Zhou LJ, Li Y, Li WM: **Intracoronary nitroprusside in the prevention of the no-reflow phenomenon in acute myocardial infarction.** *Chin Med J* 2009, **122**:2718–2723.
23. Zhao HY: **Effects of adenosine in reperfusion of acute myocardial infarction.** *China PracMed* 2009, **4**:71–72.
24. Resnic FS, Wainstein M, Lee MK, Behrendt D, Wainstein RV, Ohno-Machado L, Kirshenbaum JM, Rogers CD, Popma JJ, Piana R: **No-reflow is an independent predictor of death and myocardial infarction after percutaneous coronary intervention.** *Am Heart J* 2003, **145**:42–46.
25. Kaplan BM, Benzuly KH, Kinn JW, Bowers TR, Tilli FV, Grines CL, O'Neill WW, Safian RD: **Treatment of no-reflow in degenerated saphenous vein graft interventions: comparison of intracoronary verapamil and nitroglycerin.** *Cathet Cardiovasc Diagn* 1996, **39**:113–118.
26. Michaels AD, Appleby M, Otten MH, Dauterman K, Ports TA, Chou TM, Gibson CM: **Pretreatment with intragraft verapamil prior to percutaneous coronary intervention of saphenous vein graft lesions: results of the randomized, controlled vasodilator prevention on no reflow (VAPOR) trial.** *J Invasive Cardiol* 2002, **14**:299–302.
27. Oldenburg O, Eggebrecht H, Herrmann J, Naber CK, Haude M, Erbel R, Baumgart D: **Dose-dependent effects of intracoronary verapamil on systemic and coronary hemodynamics.** *Cardiovasc Drugs Ther* 2000, **14**:651–655.
28. Ishihara M, Sato H, Tateishi H, Kawagoe T, Shimatani Y, Ueda A, Kurisu S: **Effects of various doses of intracoronary diltiazem on coronary resistance vessels in humans.** *Jpn Circ J* 1995, **59**:790–798.
29. Huang D, Qian J, Ge L, Jin X, Jin H, Ma J, Liu Z, Zhang F, Dong L, Wang X, Yao K, Ge J: **REstoration of coronary flow in patients with no-reflow after**

- primary coronary intervention of acute myocardial infarction (RECOVER). *Am Heart J* 2012, **164**:394–401.
30. Topol EJ, Byzova TV, Plow EF: Platelet GPIIb/IIIa blockers. *Lancet* 1999, **353**:227–231.
 31. Warnhol A, Ostad MA, Heitzer T, Goldmann BU, Nowak G, Munzel T: Effect of tirofiban on percutaneous coronary intervention-induced endothelial dysfunction in patients with stable coronary artery disease. *Am J Cardiol* 2005, **95**:20–23.
 32. Stangl PA, Lewis S: Review of currently available GP IIb/IIIa inhibitors and their role in peripheral vascular interventions. *Semin Intervent Radiol* 2010, **27**:412–421.
 33. Kouz R, Kouz S, Schampaert E, Rinfret S, Tardif JC, Nguyen M, Eisenberg M, Harvey R, Afilalo M, Lauzon C, Dery JP, Mansour S, Huynh T: Effectiveness and safety of glycoprotein IIb/IIIa inhibitors in patients with myocardial infarction undergoing primary percutaneous coronary intervention: a meta-analysis of observational studies. *Int J Cardiol* 2011, **153**:249–255.
 34. Kimmelstiel C, Badar J, Covic L, Waxman S, Weintraub A, Jacques S, Kuliopulos A: Pharmacodynamics and pharmacokinetics of the platelet GPIIb/IIIa inhibitor tirofiban in patients undergoing percutaneous coronary intervention: implications for adjustment of tirofiban and clopidogrel dosage. *Thromb Res* 2005, **116**:55–66.
 35. Zhang WZ, Song MC, Liang JY, Li JH, Lei HD, Su JQ, Chen GQ: Effects of tirofiban in patients with no reflow during PCI procedure. *South China J Cardiovasc Dis* 2008, **14**:103–105.
 36. Geeganage C, Wilcox R, Bath PMW: Triple antiplatelet therapy for preventing vascular events: a systematic review and meta-analysis[J]. *BMC Med* 2010, **8**:36.
 37. Hamada S, Nishiue T, Nakamura S, Sugiura T, Kamihata H, Miyoshi H, Imuro Y, Iwasaka T: TIMI frame count immediately after primary coronary angioplasty as a predictor of functional recovery in patients with TIMI 3 reperfused acute myocardial infarction[J]. *J Am Coll Cardiol* 2001, **38**(3):666–671.
 38. Rezkalla SH, Kloner RA: Coronary no-reflow phenomenon: from the experimental laboratory to the cardiac catheterization laboratory[J]. *Catheter Cardiovasc Interv* 2008, **72**(7):950–957.
 39. Ndrepepa G, Tiroch K, Keta D, Fusaro M, Seyfarth M, Pache J, Mehilli J, Schomig A, Kastrati A: Predictive factors and impact of no reflow after primary percutaneous coronary intervention in patients with acute myocardial infarction[J]. *Circ Cardiovasc Interv* 2010, **3**(1):27–33.
 40. Stone GW, Brodie BR, Griffin JJ, Morice MC, Costantini C, Goar FST, Overlie PA, Popma JJ, McDonnell J, Jones D, O'Neill WW, Grines CL: Prospective, multicenter study of the safety and feasibility of primary stenting in acute myocardial infarction: in-hospital and 30-Day results of the PAMI stent pilot trial J]. *J Am Coll Cardiol* 1998, **31**(1):23–30.
 41. Van't Hof AW, Liem A, Suryapranata H, Hoorntje JC, De Boer MJ, Zijlstra F: Angiographic assessment of myocardial reperfusion in patients treated with primary angioplasty for acute myocardial infarction myocardial blush grade[J]. *Circulation* 1998, **97**(23):2302–2306.
 42. Henriques JP, Zijlstra F, Van't Hof AW, De Boer MJ, Dambrink JH, Gosselink M, Hoorntje JC, Suryapranata H: Angiographic assessment of reperfusion in acute myocardial infarction by myocardial blush grade[J]. *Circulation* 2003, **107**(16):2115–2119.
 43. Stone GW, Peterson MA, Lansky AJ, Dangas G, Mehran R, Leon MB: Impact of normalized myocardial perfusion after successful angioplasty in acute myocardial infarction[J]. *J Am Coll Cardiol* 2002, **39**(4):591–597.

doi:10.1186/1471-2261-13-68

Cite this article as: Qin et al.: Meta-analysis of randomized controlled trials on the efficacy and safety of intracoronary administration of tirofiban for no-reflow phenomenon. *BMC Cardiovascular Disorders* 2013 **13**:68.

Submit your next manuscript to BioMed Central and take full advantage of:

- Convenient online submission
- Thorough peer review
- No space constraints or color figure charges
- Immediate publication on acceptance
- Inclusion in PubMed, CAS, Scopus and Google Scholar
- Research which is freely available for redistribution

Submit your manuscript at
www.biomedcentral.com/submit

