

RESEARCH ARTICLE

Open Access

# Multi-parametric MRI as an indirect evaluation tool of the mechanical properties of *in-vitro* cardiac tissues

Delphine Périé<sup>1,2\*</sup>, Nagib Dahdah<sup>2</sup>, Anthony Foudis<sup>1</sup> and Daniel Curnier<sup>2,3</sup>

## Abstract

**Background:** Early detection of heart failure is essential to effectively reduce related mortality. The quantification of the mechanical properties of the myocardium, a primordial indicator of the viability of the cardiac tissue, is a key element in patient's care. Despite an incremental utilization of multi-parametric magnetic resonance imaging (MRI) for cardiac tissue characteristics and function, the link between multi-parametric MRI and the mechanical properties of the heart has not been established. We sought to determine the parametric relationship between the myocardial mechanical properties and the MR parameters. The specific aim was to develop a reproducible evaluative quantitative tool of the mechanical properties of cardiac tissue using multi-parametric MRI associated to principal component analysis.

**Methods:** Samples from porcine hearts were submitted to a multi-parametric MRI acquisition followed by a uniaxial tensile test. Multi linear regressions were performed between dependent (Young's modulus  $E$ ) and independent (relaxation times  $T_1$ ,  $T_2$  and  $T_2^*$ , magnetization transfer ratio MTR, apparent diffusion coefficient ADC and fractional anisotropy FA) variables. A principal component analysis was used to convert the set of possibly correlated variables into a set of linearly uncorrelated variables.

**Results:** Values of  $46.1 \pm 12.7$  MPa for  $E$ ,  $729 \pm 21$  ms for  $T_1$ ,  $61 \pm 6$  ms for  $T_2$ ,  $26 \pm 7$  for  $T_2^*$ ,  $35 \pm 5\%$  for  $MTR \times 100$ ,  $33.8 \pm 4.7$  for  $FA \times 10^{-2}$ , and  $5.85 \pm 0.21$   $\text{mm}^2/\text{s}$  for  $ADC \times 10^{-4}$  were measured. Multi linear regressions showed that only 45% of  $E$  can be explained by the MRI parameters. The principal component analysis reduced our seven variables to two principal components with a cumulative variability of 63%, which increased to 80% when considering the third principal component.

**Conclusions:** The proposed multi-parametric MRI protocol associated to principal component analysis is a promising tool for the evaluation of mechanical properties within the left ventricle in the *in vitro* porcine model. Our *in vitro* experiments will now allow us focused *in vivo* testing on healthy and infarcted hearts in order to determine useful quantitative MR-based biomarkers.

**Keywords:** Cardiac muscle, Myocardium, Ventricle, Mechanical properties, Multi-parametric MRI, Multiple regressions, Principal component analysis

\* Correspondence: delphine.perie@polymtl.ca

<sup>1</sup>École Polytechnique, Mechanical Engineering, Montréal, QC, Canada

<sup>2</sup>Research center, CHU Sainte-Justine, Université de Montréal, Montréal, QC, Canada

Full list of author information is available at the end of the article

## Background

Heart failure is a progressive disease in which the damage to the cardiac tissue can be of primary or secondary origin. It entails incapacity of the myocardium to sustain an adequate blood flow for the systemic needs of the organism. It is a major health problem approaching epidemic proportions in industrialized countries and imputing billions of dollars in the healthcare resources. It is estimated that at least one third of adults over 55 years old will develop heart failure later in life. The ultimate risk of heart failure is accrued death, with a survival rate of 35% five years after diagnosis [1]. Echocardiography is a cornerstone in establishing the diagnosis of heart failure by measuring parameters expressing the physical changes attributable to the end result of physiopathological abnormalities. Whereas systolic dysfunction is easily and reliably quantified by measuring ejection and shortening fractions, myocardial disturbances preceding low cardiac output remain difficult to assess and largely operator dependent in daily clinical practice despite significant advances in quantitative echocardiography. We believe that the evaluation of the mechanical parameters of the myocardium would allow an early diagnosis of biomechanical myocardial changes leading to clinically relevant myocardial dysfunction before the onset of functional incapacity.

The mechanical properties of the myocardium are a primordial indicator of the viability of the cardiac tissue and heart failure. Uniaxial, biaxial and equibiaxial stretching tests were performed on excised ventricular samples. However, translating knowledge from freshly euthanized animals to live functioning hearts with reliable measures of the mechanical properties of the myocardium remains difficult because of the vascularity of the tissue that changes drastically immediately after death. Moreover, these mechanical properties vary according to the experimental loading protocol and the mathematical model. To solve the finite elasticity stress estimation problem, finite element models of the myocardium were constructed, from isotropic, initially spherical, membrane models [2] to realistic models based on multiple short-axis and long-axis MRI slices [3-6]. Cine-tagging MRI allowed the computation of the strain field within the myocardium on the basis of tags displacement within the heart over the cardiac cycle, and associated to the finite element models, the computation of the stress field and the material parameters [7-10]. With muscle fibre architecture from diffusion tensor imaging and deformation from tissue cine-tagging MRI included to the finite element models, the constitutive parameters of a hyperelastic transversely isotropic material law were determined by minimizing the difference between the predicted and imaged deformation field [11-15].

However, the mechanical properties depend on the finite element model and its validation. Thus, techniques allowing the direct measure of these properties from medical imaging were introduced. Magnetic resonance elastography was proposed with specific gradient-echo sequences to reach small echo times and low excitation frequencies adapted for the myocardium [16-20]. However, this technique requires a special system to create the vibrations and customized phase-contrast sequences to perform motion sensitization and remains a research application. Cine-DENSE sequence that encodes tissue displacement directly into the image phase was introduced to quantify myocardial strains [21,22]. However, this sequence is time consuming and requires previously segmented data prior to calculate the Lagrangian displacement field [23,24]. Associated to MRI phase contrast velocity mapping that allows the quantification of the relative pressure distribution from the Navier–Stokes equation, cine-DENSE MRI can be used to estimate the myocardial elastic modulus and viscosity from the strain-pressure relationship [22].

There is an incremental utilization of multi-parametric magnetic resonance imaging (MRI) for cardiac tissue characteristics and function. Maps of the longitudinal relaxation time  $T_1$  of the myocardium after injection of a contrast product allowed quantifying changes in heart failure models, reflecting tissue fibrosis [25]. Higher  $T_1$  values within the myocardium were found to be associated with reduced systolic function [26]. The maps of the transverse relaxation time  $T_2$  allowed an accurate detection of myocardic oedema [27] and were found to be associated with changes in water content within the tissue during ischemia [28]. The  $T_2$  fluctuations may reflect hyperemia and tissue cellular edema in accord with the known pathophysiology of ischemic and post-ischemic yet viable muscle [29]. Myocardial fibrosis and blood oxygenation did not seem to influence  $T_2^*$  [30]. The diffusion anisotropy was used to obtain information on the spatial architecture of the musculoskeletal or cardiac muscle, especially the collagen fiber tractography [31-37]. The disorganized fibers were found to be consistent with the infarcted regions and correlated with the alteration of the mechanical and histological properties of the tissue. In an animal model, a magnetization transfer acquisition with injection of gadolinium allowed the differentiation between infarcted regions, regions of incapacity, and normal regions of the myocardium [38]. However, the link between multi-parametric MRI and the mechanical properties of the heart has not been established. We hypothesized that a relationship exists between the mechanical properties and the MR parameters of cardiac tissue. The specific aim of this study was to develop an indirect evaluation tool of the mechanical properties of cardiac tissue using multi-parametric MRI and principal component analysis.

## Methods

### Samples preparation

Porcine hearts ( $n=12$ ) were obtained from a local slaughterhouse (Lavallée, Havelock, QC, Canada) within 2 hours of death. A square sample of  $10\text{ cm} \times 6\text{ cm} \times 4\text{ cm}$  was dissected from the left ventricular myocardial tissue of each isolated heart and placed in a chamber filled with a tyrode saline solution (8 g of NaCl, 0.199 g of KCl, 0.204 g of  $\text{CaCl}_2$ , 0.098 g of  $\text{MgCl}_2$ , 1.0 g of  $\text{NaHCO}_3$ , 0.053 g of  $\text{NaH}_2\text{PO}_3$ , and 0.998 g of dextrose within 1 l of water) at room temperature. Each sample was submitted to a multi-parametric MRI acquisition 4 to 6 hours after the tissue preparation, followed by a uniaxial tensile test one hour after the MRI acquisition.

### Multi-parametric MR imaging

The chamber was placed within the head coil of a 3 Teslas whole body system (Philips Achieva X-Series) and a single slice, 5 mm thick, was taken centered within the tissue sample. Images for the quantification of T1 and T2 were acquired using a multiple inversion recovery turbo spin-echo sequence for T1 (repetition time of 2100 ms, echo time of 6.3 ms, 15 inversions times from 50 to 1900 ms) and a multi-echo turbo spin-echo sequence for T2 (repetition time of 2000 ms, 10 echo times every 15 ms). T1 [39] and T2 were extracted (Matlab, r2007 Mathworks, Natick, MA) from the signal intensity using exponential relationships. The magnetisation transfer ratio MTR was obtained using two gradient echo sequences (repetition time of 83 ms, echo time of 3.8 ms), one with an off-resonance pulse applied at 1100Hz down to the free water proton resonance frequency and the other one without it [40]. MTR was calculated as described previously [41]. The last sequence measured the apparent diffusion coefficient ADC and the fractional anisotropy FA using a multi-shot spin-echo echo-planar-imaging diffusion-weighted sequence (repetition time of 2000 ms, echo time of 40 ms) with 15 non-collinear diffusion and a b value of  $1000\text{ s/mm}^2$ .

ADC and FA were calculated as described previously [42-44].

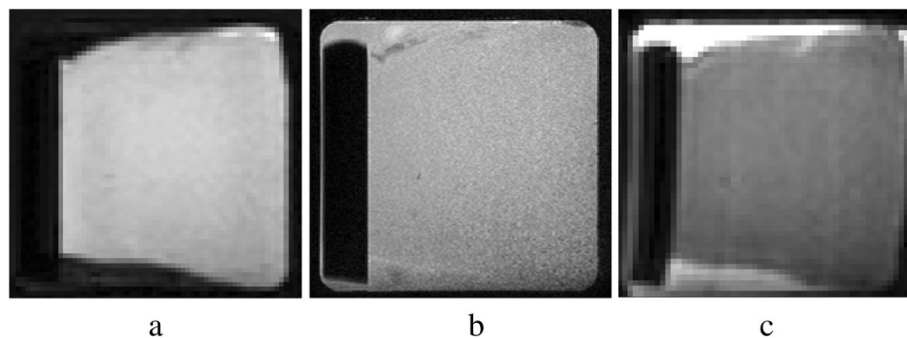
The mean and standard deviation of T1, T2, MTR, FA and ADC were calculated over a square region of interest (ROI) chosen in the middle of the tissue. The sensitivity of the determination of the mean MRI parameters over the ROI to the ROI location within the slice was very low, due to a spatially uniform signal, whatever the image weighting (Figure 1).

### Mechanical testing

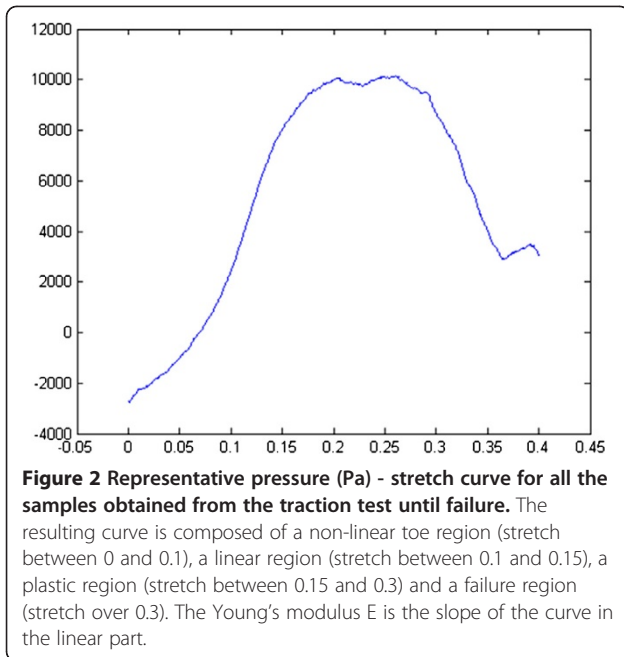
Immediately after the MRI acquisition, the heart tissue from the left ventricle was cut into samples of  $5\text{ cm} \times 1\text{ cm} \times 1\text{ cm}$ , which were submitted to a preloading of 2 N followed by a ramp-release preconditioning of amplitude 3 mm and constant speed of 5 mm/s to align the fibres for 5 minutes according to previous protocols [45,46]. Then each sample was submitted to a uniaxial tensile test until failure with a constant speed of 1 mm/s (micro-mechanical testing system Mach-1, Biomomentum Inc.). The Young's modulus E is the slope of the stress-strain curve in the linear part (Figure 2).

### Relationships between mechanical properties and MRI parameters

Multi linear regressions were performed between dependent (E) and independent (T1, T2, MTR, FA and ADC) variables to verify our hypothesis. In order to account for potential interaction between MR parameters, a principal component analysis was used to convert the set of possibly correlated variables into a set of linearly uncorrelated variables. The data were rendered to Z-values by subtracting the individual results from the group's average, and dividing by the calculated group's standard deviation. The covariance matrix and its eigenvectors and eigenvalues were computed. The cumulative energy content for each eigenvector was used to select a subset of eigenvectors as basis vectors. The source data were then converted into the new basis. The first principal



**Figure 1** T1-weighted (a), T2-weighted (b) and diffusion weighted with a b-value of  $1000\text{ s/mm}^2$  (c) images of one cardiac tissue sample installed in the chamber manufactured in acrylonitrile butadiene styrene by fused plastic deposit.



component (F1) has the largest possible variance, and each succeeding component (F2, F3, ...Fn) in turn has the highest variance possible under the constraint that it is orthogonal to the preceding components. All statistical tests were performed using XLSTATS (Addinsoft, New York, United States). All results were expressed as Mean±SD and the significance of all tests was set to p≤0.05.

### Results

All parameters measured (Table 1) showed a low standard deviation, with a normal distribution according to p-values over 0.05 for Shapiro-Wilk normality tests. The maps of the relaxation times and diffusion parameters (Figure 3) were uniform through the entire tissue sample.

Multi linear regressions showed that only 45% of E can be explained by the MRI parameters T1, T2, T2\*,

**Table 1 Mean and standard deviations of the twelve samples on the Young's modulus E and the MRI parameters (T1, T2, T2\*, MTR, FA and ADC)**

Property	Mean±SD
E	46.1±12.7 MPa
T1	729±21 ms
T2	61±6 ms
T2*	26±7
MTRx100	35±5%
FAx10 <sup>-2</sup>	33.8±4.7
ADCx10 <sup>-4</sup>	5.85±0.21 mm <sup>2</sup> /s

MTR, FA and ADC (Equation 1). The highest variance inflation factor was attributed to T2 when the regression was done on the 6 MRI parameters and to T2\* when the regression was done on the remaining 5 MRI parameters (without T2). The multiple linear regression done after removing T2 and T2\* (Equation 2) showed that all parameters had small and equivalent variance inflation factor and that the coefficient of determination did not change significantly (42%).

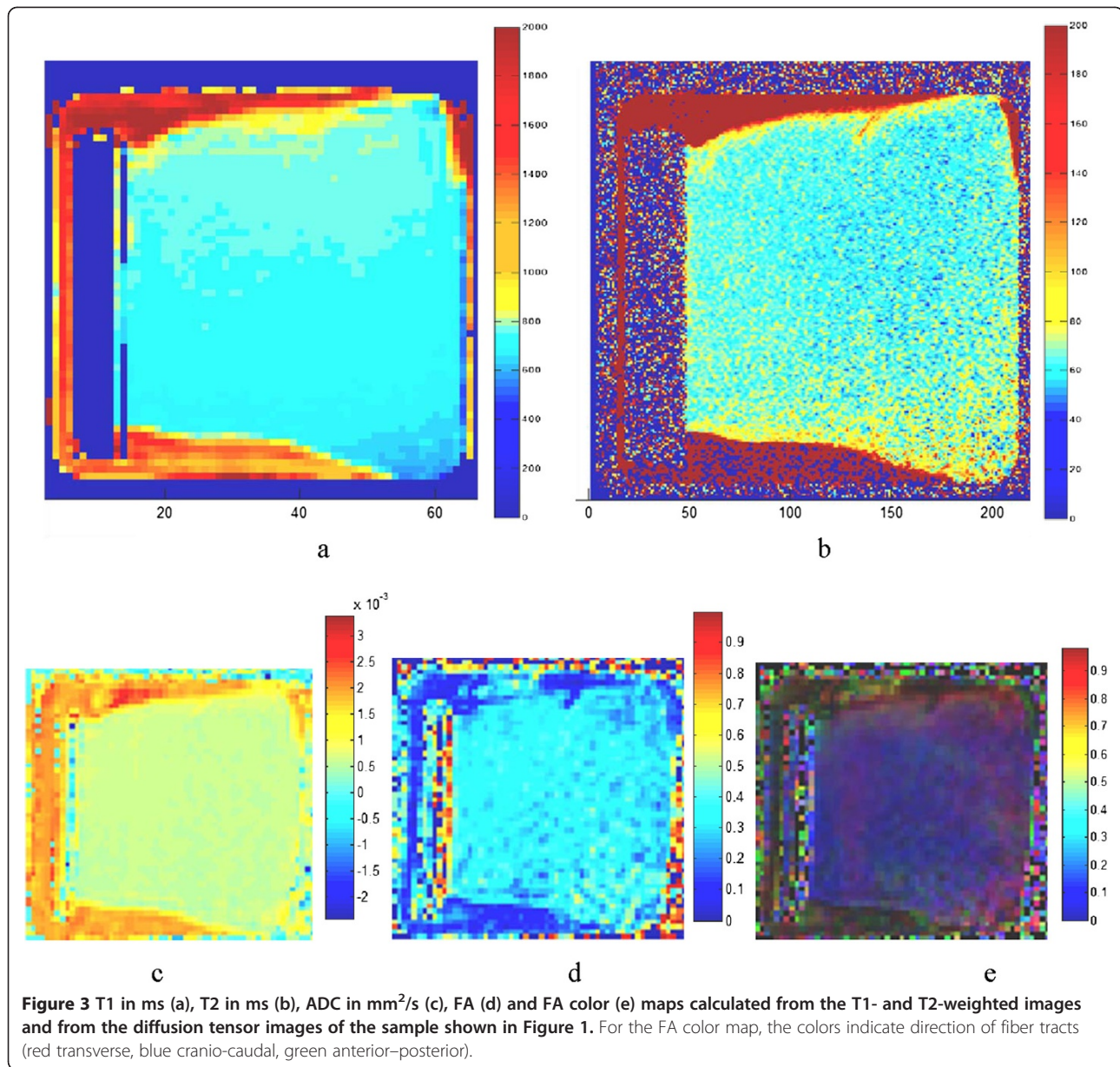
$$E = 354911 - 419 * T1 - 90 * T2 - 499 * T2 * - 639 * MTR - 46150 * FA + 91555791 * ADC \quad (1)$$

$$E = 329277 - 415 * T1 - 210 * MTR - 882 * FA + 46622057 * ADC \quad (2)$$

The principal component analysis reduced our 7 variables (E, T1, T2, T2\*, MTR, ADC, FA) to two principal components F1 and F2 with a cumulative variability of 63%, which increased to 80% when considering the third principal component F3. The representation of the 7 variables in the (F1, F2) plane (Figure 4-a) showed negative correlations between T1 and E as they were located near the circle and symmetric relatively to the circle origin. The coordinate of each variable in the (F1, F2) plane corresponds to the angle cosine (or correlation coefficient) between the variable and the axis, and the circle represents the sum of square cosines equal to 1. The position of T2 and MTR near the circle and the X-axis suggested that these parameters were expressed mainly by F1. The position of T1, T2\* and E near the circle suggested that these parameters were expressed mainly by F1 and F2 (Equation 3). ADC and FA were far away from the circle, which suggested that these parameters were not expressed only by F1 or F2. The eigenvectors of the covariance matrix showed that they were expressed mainly by F3.

$$E_{centered-reduced} = 0.29 * F1 + 0.37 * F2 \quad (3)$$

The principal component analysis reduced the 5 variables (E, T1, MTR, ADC, FA) to two principal components F1 and F2 with a cumulative variability of 67%, which increased to 81% when considering the third principal component F3. The representation of the 5 variables in the (F1, F2) plane (Figure 4-b) showed a positive correlation between ADC and FA. The position of T1, FA, and ADC near the circle suggested that these parameters were expressed mainly by F1 and F2. The position of E and MTR far away from the circle suggested that these parameters were not expressed only by F1 or



F2. The eigenvectors of the covariance matrix showed that they were expressed mainly by F3 (Equation 4).

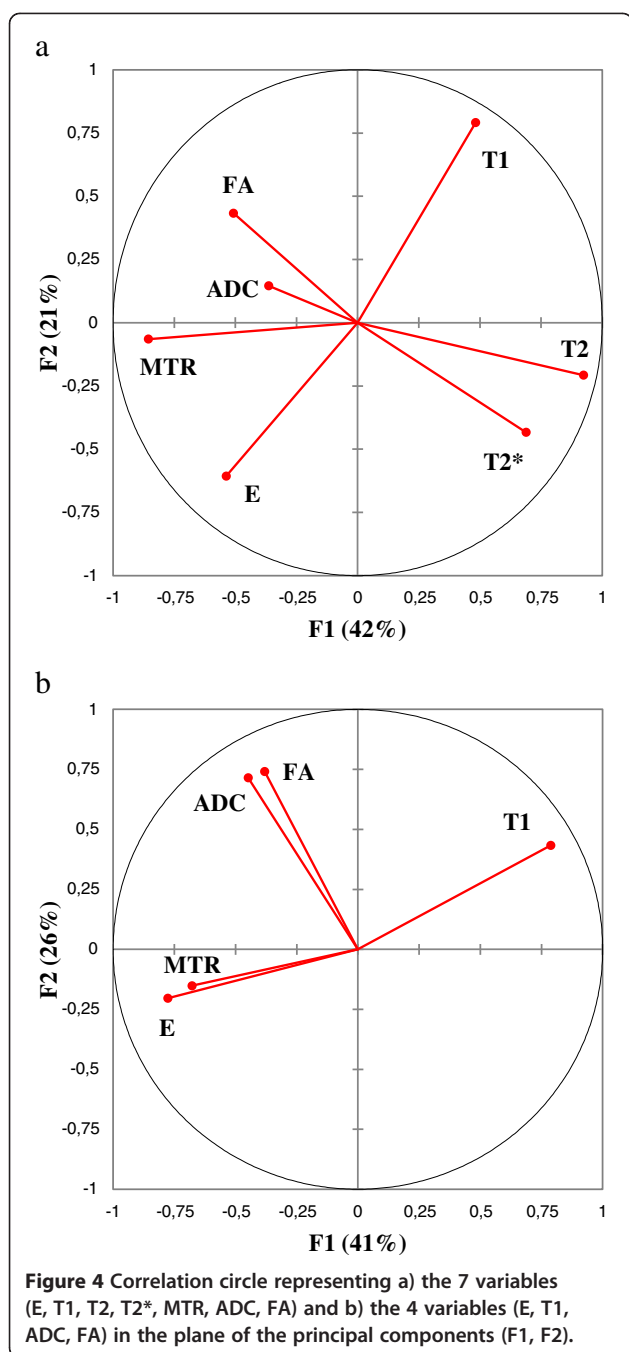
$$E_{centered-reduced} = 0.60 * F1 + 0.04 * F2 + 0.24 * F3 \quad (4)$$

### Discussion

We confirmed our hypothesis that a relationship exists between the Young's modulus and the MRI parameters of the left ventricular myocardial tissue, and that this relationship may be in part non linear. Principal component analysis is very useful to reduce the dimensionality of a data set by projecting high dimensional data into a

lower dimensional space. For the first time to our knowledge, a multi-parametric MRI acquisition composed of relaxation times mapping, magnetisation transfer and diffusion tensor imaging followed by a mechanical test in traction were performed on fresh porcine cadaveric hearts.

Hyperelastic properties or coefficients of the exponential stress-stretch relation were reported from bi-axial traction tests performed on bovine heart samples, but the stress-stretch curves showed various Young's moduli from 2-7 kPa [46-49] to 150 kPa [45,50]. An elastic modulus of 30 kPa was reported for muscle strips of rats left ventricular walls tested in biaxial traction [51]. The stiffness modulus of human samples increased from 100



to 300 kPa with increasing collagen content [52]. There is a large variation between the reported moduli, but they are smaller than the ones we measured (46 MPa) on samples of porcine left ventricular walls, because of the different mechanical protocols in uniaxial or biaxial traction. Along-fibre moduli of 4-100 kPa were reported from finite element modeling [6]. Effective shear stiffness of 10-15kPa was reported from magnetic resonance elastography performed in vivo on pigs [20]. However, much higher stiffness coefficients were found in the fibre

direction (2.6GPa) from ultrasonic velocity measurements on freshly excised ovine hearts [53].

The relaxation times we measured in this study on the isolated porcine left ventricular wall tissue were in the same range as the ones reported in the literature on animals or humans. Relaxography of excised rat myocardium showed T1 values of  $907 \pm 77$  ms, T2 values of  $32 \pm 6$  ms and T2\* values of  $32 \pm 6$  ms [28]. T2 values of 50-60 ms [54] and T2\* values of  $35 \pm 3$  ms [55] were measured on healthy volunteers while T2\* values of  $27 \pm 20$  ms were measured on patients with myocardial fibrosis [30]. T1 values of  $1100 \pm 67$  ms and 950-1050 ms were measured in vivo on domestic farm pigs [56] and normal volunteers [57-59] respectively. However, no measures of MTR, ADC or FA were reported on the heart.

The relationship found between the Young's modulus and the MRI parameters is the basis for the development of an indirect tool for the in vivo evaluation of the mechanical properties of cardiac tissues. However, these relationships vary between biological tissues and the degenerative state of the tissue. Equivalent experiments were done on intervertebral discs and showed that 45 to 80% of the Young's modulus, the aggregate modulus, the radial permeability and the axial permeability can be explained mostly by MT and diffusion sequences [60]. On the skeletal muscle, up to 78% of the Young's modulus can be explained by relaxation times, magnetization transfer and diffusion coefficients suggesting a linear relationship [61]. However, both studies showed changes in the relationships when the tissue is degenerated with a significant modification of the mechanical properties, suggesting that before the use of this technique to quantify the mechanical properties in vivo on patients suffering from various diseases, the relationships have to be defined for each degeneration state of the tissue that mimics the pathology.

There were some limitations to this study which warrant further investigations. The low number of tissue samples was due to the difficulty to obtain the animals' heart within two hours of death from the slaughterhouse. Our strict observation of the 2-hour window, in contrast, permitted the uniformity of the test results however. Another limitation relates to the chamber used for the MRI acquisition, which was manufactured in acrylonitrile butadiene styrene by rapid prototyping (fused plastic deposit). The limit of this method is that small air bubbles can be trapped during the fused plastic deposit, even if high-density presets are used. Nevertheless, artifacts on the relaxation time images were removed using a filter that suppresses high values (more than 2500 ms in T1, 200 ms in T2). For the diffusion images, the use of a multi-shot echo-planar-imaging sequence decreased the distortion induced in the images by the air bubbles. Diffusion tensor imaging is often

limited by a lower signal to noise ratio than in relaxation time imaging, but an estimated signal to noise ratio of 105 for our  $b=0$  image confirms the reliability of our ADC and FA measures in the cardiac muscle tissue. From an analytical perspective, the mechanical behaviour of the cardiac muscle tissue is known to be hyperelastic [11-15] which warrant the experimental data to be fitted with a hyperelastic model instead of a linear model.

In vivo relaxometry of cardiac tissue is a well established method already used in clinical applications [25-30]. The *in-vivo* sensitivity of MTR measurements to infarct and inflammation was proved [38]. However, the application of diffusion tensor imaging of cardiac tissue *in-vivo* remains challenging, but the feasibility has already been demonstrated and should be available in the near future. Thus our method could be transferred to in an *in-vivo* study in which the mechanical properties as determined by multi-parametric MRI could be compared to the mechanical properties as determined from cine-MRI or cine-tagging-MRI associated to finite element modeling [7-11].

## Conclusions

The proposed multi-parametric MRI protocol associated to principal component analysis is a promising tool for the evaluation of mechanical properties within the left ventricular myocardium. Our *in vitro* experiments will now allow us focused *in vivo* testing on healthy and infarcted hearts in order to determine useful quantitative MR-based biomarkers. Based on our data it is also possible now to perform longitudinal *in vivo* testing on ischemic and revascularized hearts. Future directions of our laboratory aim for to better understand and to implement novel MRI parameters as biomarkers of myocardial viability and potential prognostic scoring of myocardial relaxation and contraction. The next experimental step will verify the *in vivo* application of this technique: the data from an *in vivo* multi-parametric MRI acquisition on healthy and infarcted pigs will be compared to the data from the same MRI protocol performed on the same animals after euthanasia, followed by cyclic mechanical tests and biochemical tests.

## Competing interests

The authors declare that they have no competing interests.

## Authors' contributions

DP proposed the design of the study, carried out the data analysis, discussed the results and drafted the manuscript. ND participated to the results discussion and revised the manuscript. AF carried out the experiments. DC participated to the design of the study and the statistical analysis and revised the manuscript. All authors read and approved the final manuscript.

## Acknowledgements

The Quebec Bio-Imaging network (Fonds de Recherche du Québec en Santé) and the Research center of the Sainte-Justine Hospital (Montreal, Canada) for the financial support.

Irene Londono, from the Pediatric Orthopaedic Laboratory (Research Center, Sainte Justine Hospital, Montreal, Canada), for her support with the tissues preservation.

## Author details

<sup>1</sup>École Polytechnique, Mechanical Engineering, Montréal, QC, Canada. <sup>2</sup>Research center, CHU Sainte-Justine, Université de Montréal, Montréal, QC, Canada. <sup>3</sup>Université de Montréal, Kinesiology, Montréal, QC, Canada.

Received: 22 October 2012 Accepted: 20 March 2013

Published: 27 March 2013

## References

1. McMurray JJ, Pfeffer MA: **Heart failure.** *Lancet* 2005, **365**:1877-1889.
2. Bogen DK, Rabinowitz SA, Needleman A, McMahon TA, Abelmann WH: **An analysis of the mechanical disadvantage of myocardial infarction in the canine left ventricle.** *Circ Res* 1980, **47**:728-741.
3. Guccione JM, Moonly SM, Moustakidis P, Costa KD, Moulton MJ, Ratcliffe MB, Pasque MK: **Mechanism underlying mechanical dysfunction in the border zone of left ventricular aneurysm: a finite element model study.** *Ann Thorac Surg* 2001, **71**:654-662.
4. Wollmuth JR, Bree DR, Cupps BP, Krock MD, Pomerantz BJ, Pasque RP, Howells A, Moazami N, Kouchoukos NT, Pasque MK: **Left ventricular wall stress in patients with severe aortic insufficiency with finite element analysis.** *Ann Thorac Surg* 2006, **82**:840-846.
5. Thorvaldsen T, Osnes H, Sundnes J: **A mixed finite element formulation for a non-linear, transversely isotropic material model for the cardiac tissue.** *Comput Methods Biomech Biomed Engin* 2005, **8**:369-379.
6. Yettram AL, Beecham MC: **An analytical method for the determination of along-fibre to cross-fibre elastic modulus ratio in ventricular myocardium—a feasibility study.** *Med Eng Phys* 1998, **20**:103-108.
7. Walker JC, Ratcliffe MB, Zhang P, Wallace AW, Fata B, Hsu EW, Saloner D, Guccione JM: **MRI-based finite-element analysis of left ventricular aneurysm.** *Am J Physiol Heart Circ Physiol* 2005, **289**:H692-H700.
8. Walker JC, Ratcliffe MB, Zhang P, Wallace AW, Hsu EW, Saloner DA, Guccione JM: **Magnetic resonance imaging-based finite element stress analysis after linear repair of left ventricular aneurysm.** *J Thorac Cardiovasc Surg* 2008, **135**:1094-1102. 1102 e1091-1092.
9. Wenk JF, Sun K, Zhang Z, Soleimani M, Ge L, Saloner D, Wallace AW, Ratcliffe MB, Guccione JM: **Regional left ventricular myocardial contractility and stress in a finite element model of posterobasal myocardial infarction.** *J Biomech Eng* 2011, **133**:044501.
10. Yoshioka I, Saiki Y, Ichinose A, Takase K, Takahashi S, Ohashi T, Sato M, Tabayashi K: **Tagged cine magnetic resonance imaging with a finite element model can predict the severity of retrosternal adhesions prior to redo cardiac surgery.** *J Thorac Cardiovasc Surg* 2009, **137**:957-962.
11. Augenstein KF, Cowan BR, LeGrice IJ, Young AA: **Estimation of cardiac hyperelastic material properties from MRI tissue tagging and diffusion tensor imaging.** *Med Image Comput Assist Interv* 2006, **9**:628-635.
12. Dorri F, Niederer PF, Lunkenheimer PP: **A finite element model of the human left ventricular systole.** *Comput Methods Biomech Biomed Engin* 2006, **9**:319-341.
13. Wang VY, Lam HI, Ennis DB, Cowan BR, Young AA, Nash MP: **Modelling passive diastolic mechanics with quantitative MRI of cardiac structure and function.** *Med Image Anal* 2009, **13**:773-784.
14. Wang C, Witschey W, Goldberg A, Elliott M, Borthakur A, Reddy R: **Magnetization transfer ratio mapping of intervertebral disc degeneration.** *Magn Reson Med* 2010, **64**:1520-1528.
15. Bovendeerd PH, Arts T, Delhaas T, Huyghe JM, van Campen DH, Reneman RS: **Regional wall mechanics in the ischemic left ventricle: numerical modeling and dog experiments.** *Am J Physiol* 1996, **270**:H398-H410.
16. Kolipaka A, McGee KP, Araoz PA, Glaser KJ, Manduca A, Romano AJ, Ehman RL: **MR elastography as a method for the assessment of myocardial stiffness: comparison with an established pressure-volume model in a left ventricular model of the heart.** *Magn Reson Med* 2009, **62**:135-140.
17. Elgeti T, Laule M, Kaufels N, Schnorr J, Hamm B, Samani A, Braun J, Sack I: **Cardiac MR elastography: comparison with left ventricular pressure measurement.** *J Cardiovasc Magn Reson* 2009, **11**:44.

18. Sack I, Rump J, Elgeti T, Samani A, Braun J: **MR elastography of the human heart: noninvasive assessment of myocardial elasticity changes by shear wave amplitude variations.** *Magn Reson Med* 2009, **61**:668–677.
19. Robert B, Sinkus R, Gennisson JL, Fink M: **Application of DENSE-MR-elastography to the human heart.** *Magn Reson Med* 2009, **62**:1155–1163.
20. Kolipaka A, McGee KP, Manduca A, Anavekar N, Ehman RL, Arazo PA: **In vivo assessment of MR elastography-derived effective end-diastolic myocardial stiffness under different loading conditions.** *J Magn Reson Imaging* 2011, **33**:1224–1228.
21. Zhong X, Spottiswoode BS, Meyer CH, Kramer CM, Epstein FH: **Imaging three-dimensional myocardial mechanics using navigator-gated volumetric spiral cine DENSE MRI.** *Magnetic resonance in medicine: official journal of the Society of Magnetic Resonance in Medicine / Society of Magnetic Resonance in Medicine* 2010, **64**:1089–1097.
22. Wen H, Bennett E, Epstein N, Plehn J: **Magnetic resonance imaging assessment of myocardial elastic modulus and viscosity using displacement imaging and phase-contrast velocity mapping.** *Magn Reson Med* 2005, **54**:538–548.
23. Young AA, Frangi AF: **Computational cardiac atlases: from patient to population and back.** *Exp Physiol* 2009, **94**:578–596.
24. Fonseca CG, Backhaus M, Bluemke DA, Britten RD, Chung JD, Cowan BR, Dinov ID, Finn JP, Hunter PJ, Kadish AH, et al: **The Cardiac Atlas Project—an imaging database for computational modeling and statistical atlases of the heart.** *Bioinformatics* 2011, **27**:2288–2295.
25. Illes L, Pfluger H, Phrommittikul A, Cherayath J, Aksit P, Gupta SN, Kaye DM, Taylor AJ: **Evaluation of diffuse myocardial fibrosis in heart failure with cardiac magnetic resonance contrast-enhanced T1 mapping.** *J Am Coll Cardiol* 2008, **52**:1574–1580.
26. Krombach GA, Hahn C, Tomars M, Buecker A, Grawe A, Gunther RW, Kuhl HP: **Cardiac amyloidosis: MR imaging findings and T1 quantification, comparison with control subjects.** *J Magn Reson Imaging* 2007, **25**:1283–1287.
27. Giri S, Chung YC, Merchant A, Mihai G, Rajagopalan S, Raman SV, Simonetti OP: **T2 quantification for improved detection of myocardial edema.** *J Cardiovasc Magn Reson* 2009, **11**:56.
28. Bruvold M, Seland JG, Brurok H, Jynge P: **Dynamic water changes in excised rat myocardium assessed by continuous distribution of T1 and T2.** *Magn Reson Med* 2007, **58**:442–447.
29. Foltz WD, Yang Y, Graham JJ, Detsky JS, Dick AJ, Wright GA: **T2 fluctuations in ischemic and post-ischemic viable porcine myocardium in vivo.** *J Cardiovasc Magn Reson* 2006, **8**:469–474.
30. Meloni A, Pepe A, Positano V, Favilli B, Magglio A, Capra M, Lo Pinto C, Gerardi C, Santarelli MF, Midiri M, et al: **Influence of myocardial fibrosis and blood oxygenation on heart T2\* values in thalassemia patients.** *J Magn Reson Imaging* 2009, **29**:832–837.
31. Sosnovik DE, Wang R, Dai G, Reese TG, Wedeen VJ: **Diffusion MR tractography of the heart.** *J Cardiovasc Magn Reson* 2009, **11**:47.
32. Sosnovik DE, Wang R, Dai G, Wang T, Aikawa E, Novikov M, Rosenzweig A, Gilbert RJ, Wedeen VJ: **Diffusion spectrum MRI tractography reveals the presence of a complex network of residual myofibers in infarcted myocardium.** *Circ Cardiovasc Imaging* 2009, **2**:206–212.
33. Rohmer D, Sitek A, Gullberg GT: **Reconstruction and visualization of fiber and laminar structure in the normal human heart from ex vivo diffusion tensor magnetic resonance imaging (DTMRI) data.** *Invest Radiol* 2007, **42**:777–789.
34. Frindel C, Robini M, Rapacchi S, Stephant E, Zhu YM, Croisille P: **Towards in vivo diffusion tensor MRI on human heart using edge-preserving regularization.** *Conf Proc IEEE Eng Med Biol Soc* 2007, **2007**:6008–6011.
35. Toussaint N, Sermesant M, Stoeck CT, Kozerke S, Batchelor PG: **In vivo human 3D cardiac fibre architecture: reconstruction using curvilinear interpolation of diffusion tensor images.** *Med Image Comput Comput Assist Interv* 2010, **13**:418–425.
36. Zhang Y, Liang X, Ma J, Jing Y, Gonzales MJ, Villongco C, Krishnamurthy A, Frank LR, Nigam V, Stark P, et al: **An atlas-based geometry pipeline for cardiac Hermite model construction and diffusion tensor reorientation.** *Med Image Anal* 2012, **16**(6):1130–41.
37. Helm PA, Tseng HJ, Younes L, McVeigh ER, Winslow RL: **Ex vivo 3D diffusion tensor imaging and quantification of cardiac laminar structure.** *Magn Reson Med* 2005, **54**:850–859.
38. Weiss CR, Aletras AH, London JF, Taylor JL, Epstein FH, Wassmuth R, Balaban RS, Arai AE: **Stunned, infarcted, and normal myocardium in dogs: simultaneous differentiation by using gadolinium-enhanced cine MR imaging with magnetization transfer contrast.** *Radiology* 2003, **226**:723–730.
39. Wright P, Mouglin O, Totman J, Peters A, Brookes M, Coxon R, Morris P, Clemence M, Francis S, Bowtell R, Gowland P: **Water proton  $\rho$  measurements in brain tissue at 7, 3, and 1.5 T using IR-EPI, IR-TSE, and MPRAGE: results and optimization.** *Magnetic Resonance Materials in Physics. Biology and Medicine* 2008, **21**:121–130.
40. Wang C, Witschey W, Goldberg A, Elliott M, Borthakur A, Reddy R: **Magnetization transfer ratio mapping of intervertebral disc degeneration.** *Magn Res Med* 2010, **64**(5):1520–8.
41. Henkelman RM, Stanisz GJ, Graham SJ: **Magnetization transfer in MRI: a review.** *NMR Biomed* 2001, **14**:57–64.
42. Kingsley PB: **Introduction to diffusion tensor imaging mathematics: Part I. Tensors, rotations, and eigenvectors.** *Concepts in Magnetic Resonance Part A* 2006, **28A**:101–122.
43. Kingsley PB: **Introduction to diffusion tensor imaging mathematics: Part II. Anisotropy, diffusion-weighting factors, and gradient encoding schemes.** *Concepts in Magnetic Resonance Part A* 2006, **28A**:123–154.
44. Le Bihan D, Breton E, Lallemand D, Grenier P, Cabanis E, Laval-Jeantet M: **MR imaging of intravoxel incoherent motions: application to diffusion and perfusion in neurologic disorders.** *Radiology* 1986, **161**:401–407.
45. Ghaemi H, Behdinin K, Spence AD: **In vitro technique in estimation of passive mechanical properties of bovine heart part I. Experimental techniques and data.** *Med Eng Phys* 2009, **31**:76–82.
46. Humphrey JD, Strumpf RK, Yin FC: **Determination of a constitutive relation for passive myocardium: II. Parameter estimation.** *J Biomech Eng* 1990, **112**:340–346.
47. Humphrey JD, Yin FC: **On constitutive relations and finite deformations of passive cardiac tissue: I. A pseudostrain-energy function.** *J Biomech Eng* 1987, **109**:298–304.
48. Humphrey JD, Strumpf RK, Yin FC: **Determination of a constitutive relation for passive myocardium: I. A new functional form.** *J Biomech Eng* 1990, **112**:333–339.
49. Lin DH, Yin FC: **A multiaxial constitutive law for mammalian left ventricular myocardium in steady-state barium contracture or tetanus.** *J Biomech Eng* 1998, **120**:504–517.
50. Ghaemi H, Behdinin K, Spence AD: **In vitro technique in estimation of passive mechanical properties of bovine heart part II. Constitutive relation and finite element analysis.** *Med Eng Phys* 2009, **31**:83–91.
51. Virgen-Ortiz A, Marin JL, Elizalde A, Castro E, Stefani E, Toro L, Muniz J: **Passive mechanical properties of cardiac tissues in heart hypertrophy during pregnancy.** *J Physiol Sci* 2009, **59**:391–396.
52. Chaturvedi RR, Herron T, Simmons R, Shore D, Kumar P, Sethia B, Chua F, Vassiliadis E, Kentish JC: **Passive stiffness of myocardium from congenital heart disease and implications for diastole.** *Circulation* 2010, **121**:979–988.
53. Yang M, Baldwin SL, Marutyan KR, Wallace KD, Holland MR, Miller JG: **Elastic stiffness coefficients ( $c_{11}$ ,  $C_{33}$ , and  $C_{13}$ ) for freshly excised and formalin-fixed myocardium from ultrasonic velocity measurements.** *J Acoust Soc Am* 2006, **119**:1880–1887.
54. Huang TY, Liu YJ, Stemmer A, Poncelet BP: **T2 measurement of the human myocardium using a T2-prepared transient-state TrueFISP sequence.** *Magn Reson Med* 2007, **57**:960–966.
55. Wacker CM, Bock M, Hartlep AW, Beck G, van Kaick G, Ertl G, Bauer WR, Schad LR: **Changes in myocardial oxygenation and perfusion under pharmacological stress with dipyridamole: assessment using T\*2 and T1 measurements.** *Magn Reson Med* 1999, **41**:686–695.
56. Wagenseil JE, Johansson LO, Lorenz CH: **Characterization of t1 relaxation and blood-myocardial contrast enhancement of NC100150 injection in cardiac MRI.** *J Magn Reson Imaging* 1999, **10**:784–789.
57. Piechnik SK, Ferreira VM, Dall'Armellina E, Cochlin LE, Greiser A, Neubauer S, Robson MD: **Shortened Modified Look-Locker Inversion recovery (ShMOLLI) for clinical myocardial T1-mapping at 1.5 and 3 T within a 9 heartbeat breathhold.** *J Cardiovasc Magn Reson* 2010, **12**:69.
58. Gai N, Turkbey EB, Nazarian S, van der Geest RJ, Liu CY, Lima JA, Bluemke DA: **T1 mapping of the gadolinium-enhanced myocardium: adjustment for factors affecting interpatient comparison.** *Magn Reson Med* 2011, **65**:1407–1415.
59. Messroghli DR, Radjenovic A, Kozerke S, Higgins DM, Sivananthan MU, Ridgway JP: **Modified Look-Locker inversion recovery (MOLLI) for high-resolution T1 mapping of the heart.** *Magn Reson Med* 2004, **52**:141–146.



60. Recuerda M, Perie D, Gilbert G, Beaudoin G: **Assessment of mechanical properties of isolated bovine intervertebral discs from multi-parametric Magnetic Resonance Imaging.** *BMC Musculoskelet Disord* 2012, **13**:95.
61. Grenier R, Perie D, Gilbert G, Beaudoin G, Curnier D: **Assessment of mechanical properties of muscles from multi-parametric Magnetic Resonance Imaging.** *J Biomed Sci Eng* 2013. In press.

doi:10.1186/1471-2261-13-24

**Cite this article as:** Périé *et al.*: Multi-parametric MRI as an indirect evaluation tool of the mechanical properties of *in-vitro* cardiac tissues. *BMC Cardiovascular Disorders* 2013 **13**:24.

**Submit your next manuscript to BioMed Central  
and take full advantage of:**

- Convenient online submission
- Thorough peer review
- No space constraints or color figure charges
- Immediate publication on acceptance
- Inclusion in PubMed, CAS, Scopus and Google Scholar
- Research which is freely available for redistribution

Submit your manuscript at  
[www.biomedcentral.com/submit](http://www.biomedcentral.com/submit)

