

CORRECTION

Open Access



Correction: Effect of an increase in Lp(a) following statin therapy on cardiovascular prognosis in secondary prevention population of coronary artery disease

Lijun Zhu¹, Yangliang Fang¹, Beibei Gao², Xiangbo Jin², Jiamin Zheng², Ying He² and Jinyu Huang^{2*}

Correction to: *BMC Cardiovascular Disorders* (2022) 22:474
<https://doi.org/10.1186/s12872-022-02932-y>

Following publication of the original article [1], In Fig. 3 of this article “The last bracket of “Lp(a) increased ()” was

supposed to have positive and negative signs”; the figure should have appeared as shown below.

The original article has been corrected.

Author details

¹Department of Cardiology, Ningbo Municipal Medical Center LiHuilu Hospital, Zhejiang, China. ²Department of Cardiology, The Affiliated Hangzhou First People's Hospital, Zhejiang University School of Medicine, Zhejiang, China.

Accepted: 22 December 2022

Published online: 30 December 2022

Reference

1. Zhu L, et al. Effect of an increase in Lp(a) following statin therapy on cardiovascular prognosis in secondary prevention population of coronary artery disease. *BMC Cardiovasc Disord.* 2022;22:474. <https://doi.org/10.1186/s12872-022-02932-y>.

Publisher's Note

Springer Nature remains neutral with regard to jurisdictional claims in published maps and institutional affiliations.

The original article can be found online at <https://doi.org/10.1186/s12872-022-02932-y>.

*Correspondence: zdsyhjy0902@zju.edu.cn

²Department of Cardiology, The Affiliated Hangzhou First People's Hospital, Zhejiang University School of Medicine, Zhejiang, China

Full list of author information is available at the end of the article



© The Author(s) 2022. **Open Access** This article is licensed under a Creative Commons Attribution 4.0 International License, which permits use, sharing, adaptation, distribution and reproduction in any medium or format, as long as you give appropriate credit to the original author(s) and the source, provide a link to the Creative Commons licence, and indicate if changes were made. The images or other third party material in this article are included in the article's Creative Commons licence, unless indicated otherwise in a credit line to the material. If material is not included in the article's Creative Commons licence and your intended use is not permitted by statutory regulation or exceeds the permitted use, you will need to obtain permission directly from the copyright holder. To view a copy of this licence, visit <http://creativecommons.org/licenses/by/4.0/>. The Creative Commons Public Domain Dedication waiver (<http://creativecommons.org/publicdomain/zero/1.0/>) applies to the data made available in this article, unless otherwise stated in a credit line to the data.

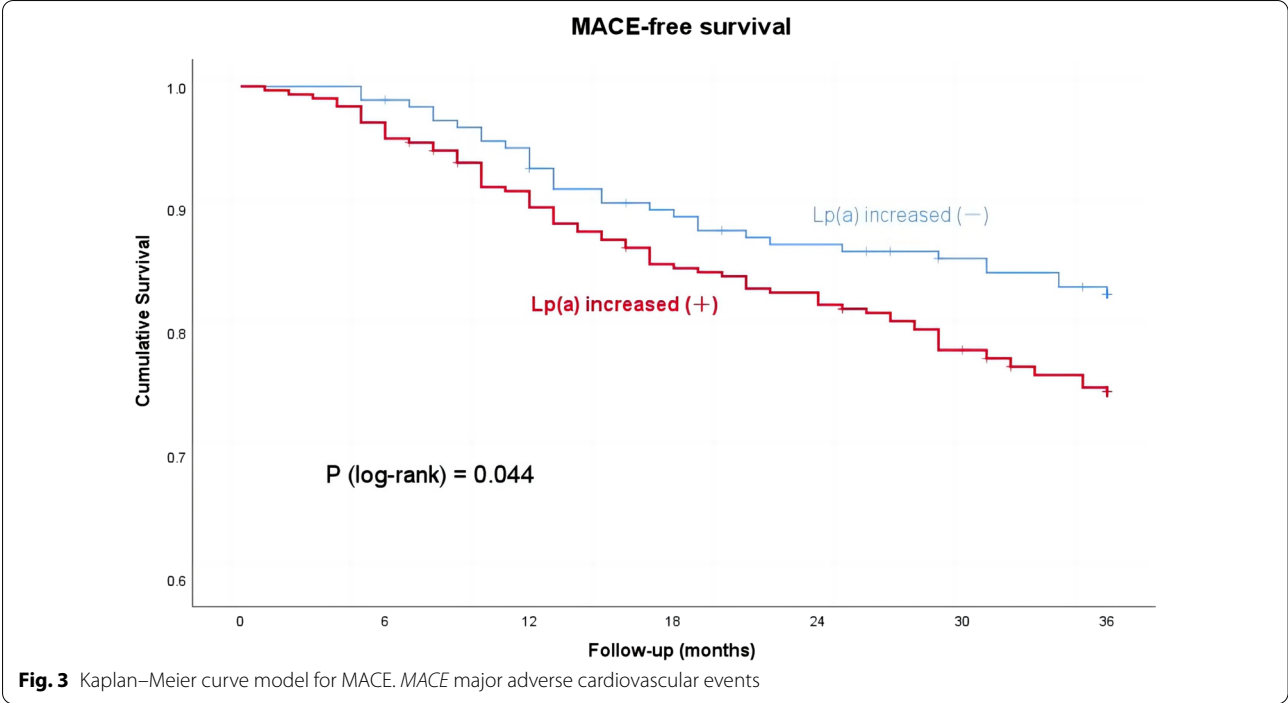


Fig. 3 Kaplan–Meier curve model for MACE. MACE major adverse cardiovascular events