

RESEARCH

Open Access



# Impact of signal-averaged electrocardiography findings on appropriate shocks in prophylactic implantable cardioverter defibrillator patients with nonischemic systolic heart failure

Michiru Nomoto<sup>1</sup>, Atsushi Suzuki<sup>1</sup>, Tsuyoshi Shiga<sup>1,2\*</sup>, Morio Shoda<sup>3</sup> and Nobuhisa Hagiwara<sup>1</sup>

## Abstract

**Background:** Appropriate shock therapy is associated with subsequent all-cause death in heart failure (HF) patients who receive an implantable cardioverter defibrillator (ICD) for the primary prevention of sudden cardiac death. To evaluate the impact of signal-averaged electrocardiography (SAECG) findings on appropriate shocks in prophylactic ICD patients with nonischemic systolic HF.

**Methods:** We studied 86 patients with nonischemic HF and a left ventricular ejection fraction  $\leq 35\%$  who underwent new ICD implantation for the primary prevention of sudden cardiac death. We excluded patients who had a previously implanted permanent pacemaker and patients who received cardiac resynchronization therapy with an ICD. SAECG was performed before implantation. Abnormal SAECG findings were defined if 2 of the following 3 conditions were identified: filtered QRS duration (fQRS)  $\geq 114$  ms, root-mean-square voltage during the last 40 ms of the fQRS (RMS 40)  $< 20$   $\mu$ V, and duration of the low-amplitude potentials  $< 40$   $\mu$ V (LAS 40)  $> 38$  ms; additionally, patients with a QRS complex  $\geq 120$  ms who met both the RMS 40 and LAS 40 criteria were also considered to have abnormal SAECG findings. The primary outcome was the first occurrence of appropriate shock after implantation of the ICD. The secondary outcomes were the first occurrence of inappropriate shock and all-cause mortality.

**Results:** Forty-two patients met the criteria for abnormal SAECG findings (49%). During a median follow-up period of 61 months, 17 patients (20%) died, 24 (28%) received appropriate shock therapy, and 19 (22%) received inappropriate shock therapy. There was a significantly higher incidence of appropriate shocks in patients with abnormal SAECG findings than in those with normal SAECG findings (log-rank test,  $p = 0.025$ ). Multivariate analysis revealed that abnormal SAECG findings were independently associated with the occurrence of appropriate shock (hazard ratio 2.67, 95% confidential interval 1.14–6.26). However, abnormal SAECG findings were not related to inappropriate shock. There was no difference in the incidence of all-cause death between patients with abnormal and normal SAECG findings.

**Conclusions:** Our results suggest that abnormal SAECG findings are associated with a high probability of appropriate shocks in prophylactic ICD patients with nonischemic systolic HF.

\*Correspondence: shiga@jikei.ac.jp

<sup>1</sup> Department of Cardiology, Tokyo Women's Medical University, Tokyo, Japan  
Full list of author information is available at the end of the article



**Keywords:** Heart failure, Implantable cardioverter defibrillator, Nonischemic, Shocks, Signal-averaged electrocardiogram

## Background

Implantable cardioverter defibrillators (ICDs) are a potential treatment for preventing sudden cardiac death (SCD) in patients with low left ventricular ejection fraction (LVEF) and myocardial infarction/heart failure (HF), and ICDs have been shown to reduce the occurrence of SCD and improve prognosis [1–3]. However, appropriate shock therapy is also reported to be associated with subsequent all-cause death in patients who receive an ICD for the primary prevention of SCD [4–7]. Moreover, ICD shocks impair patients' quality of life and psychological status [8]. Recently, the European Comparative Effectiveness Research to Assess the Use of Primary Prophylactic Implantable Cardioverter-Defibrillators (EU-CERT-ICD) showed in a large cohort that digitalis use, male sex, chronic obstructive pulmonary disease and increased QT<sub>C</sub> (per 40 ms) were risk factors for appropriate shock in primary prevention ICD patients [9]. Nevertheless, potent predictors of appropriate shock therapy for patients with HF and reduced LVEF with primary prophylactic ICDs have yet to be determined.

Signal-averaged electrocardiography (SAECG) is a high-resolution surface electrocardiography technique that detects low-amplitude waveforms and late potentials within the terminal portion of QRS waves. Abnormal SAECG findings can predict arrhythmic substrates that lead to the development of ventricular tachyarrhythmias and is related to outcomes in cases of infarct [10]. In general, cases of ischemic etiology might be driven, at least in part, by the induction of ischemic events. In patients with nonischemic dilated cardiomyopathy, abnormal SAECG findings predict ventricular tachyarrhythmias, SCD or all-cause mortality, although controversy exists [10–13]. Abnormal SAECG findings alone have a low positive predictive value for sustained ventricular tachycardia (VT)/fibrillation (VF) and SCD among patients with a wide range of cardiovascular diseases [10]. However, SAECG may be useful for the risk stratification of appropriate shocks among selected patients with nonischemic HF at high risk for SCD. Therefore, this study aimed to evaluate the impact of abnormal SAECG findings on appropriate shocks in nonischemic systolic HF patients who received an ICD for the primary prevention of SCD.

## Methods

### Patients

All patients with nonischemic HF and an LVEF  $\leq$  35% who prophylactically underwent new implantation of an ICD device from January 2000 to May 2018 at Tokyo Women's Medical University Hospital were retrospectively included in this study. We excluded patients who received ICD devices for secondary prevention of SCD due to a history of sustained VT/VF and survivors of SCD. We also excluded patients who had a previously implanted pacemaker and patients with cardiac resynchronizing therapy (biventricular ICDs) from our analysis. A nonischemic etiology was defined as the absence of coronary artery disease, as confirmed by coronary angiography. LVEF was measured using the modified Simpson's method by echocardiography. Indications for the implantation of an ICD device were chronic HF with a New York Association (NYHA) functional class II/III and LVEF  $\leq$  35% despite appropriate medical treatment according to the guidelines of the American College of Cardiology Foundation and American Heart Association or Japanese Circulation Society [14, 15].

This study categorized the native QRS complex as follows. A narrow QRS was defined as  $\leq$  100 ms. Left bundle branch block (LBBB) and right bundle branch block (RBBB) were defined according to present definitions with a QRS duration  $>$  120 ms. Intraventricular conduction delay (IVCD) was defined as a QRS duration 101–120 ms regardless of morphology or a QRS duration  $>$  120 ms that did not meet the classical bundle branch block definitions and was further divided into IVCD with LBBB-predominant (L-IVCD) and non-LBBB-predominant (O-IVCD) features. L-IVCD required the following 12-lead electrocardiographic findings: net negative in lead V1, no terminal positivity in lead V1, and net positive in lead I [16].

SAECG was performed within 2 weeks before ICD implantation in all patients. SAECG was performed when the patients were in stable condition without the use of intravenous diuretics, inotropes and/or vasodilators and without mechanical circulatory support. This study was approved by the institutional review board of Tokyo Women's Medical University.

### Outcomes

The primary outcome was the first occurrence of an appropriate shock after ICD implantation. The secondary

outcomes were the first occurrence of an inappropriate shock and all-cause mortality. Data for VT/VF occurrence requiring ICD shock were obtained by reviewing the event details and electrograms stored on ICD disks.

The VF detection zone was programmed for all patients. The VT zone was programmed for 72 patients; 2 VT zones were programmed for 6 of these patients. ICD shock (defibrillation) occurred when ventricular arrhythmias were detected in the VF zone or the fast VT zone (in some cases). Antitachycardia pacing (ATP), including burst and/or autodecremental ramp pacing, was delivered when triggered by VT. A shock was delivered if the pacing failed to terminate the VT. Delayed high-rate programming has been used to avoid unnecessary shocks according to the guidelines [17] and its use significantly increased over the years of the study period (Additional file 1: Table S1).

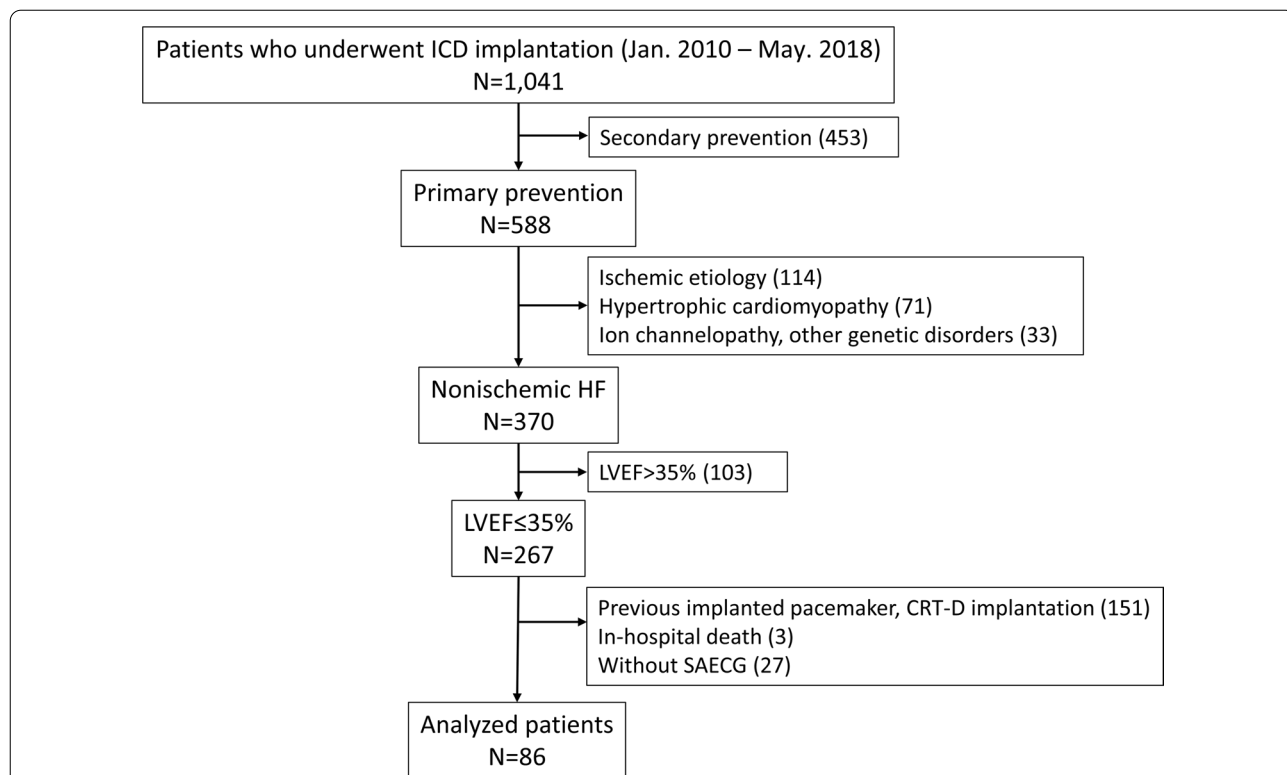
**Follow-up**

Follow-up was performed every 3–6 months up to December 2021 at our ICD clinic. The patients were followed until death from any cause, a change in ICD clinic, loss to follow-up, or December 2021. Information regarding the deceased patients was obtained from medical records, family members, the patients’

general practitioners, and the hospitals to which the patients had been admitted. Eleven patients (13%) were followed for over 5 months after ICD implantation at our hospital but were subsequently referred to the ICD clinics of other hospitals. One patient was lost to follow-up (Fig. 1).

**SAECG**

SAECG (Predictor BSM-32, Arrhythmia Research Technology, Fitchburg, Massachusetts, USA) findings were recorded with standard X, Y, and Z orthogonal leads using high-pass filtering. The signals from the leads were combined into a vector magnitude (the root sum square of the signals of each lead). Approximately 200 beats were averaged to obtain a noise level of <0.5 μV. The following parameters were calculated: the filtered QRS duration (fQRS), root-mean-square voltage during the last 40 ms of the fQRS (RMS 40), and duration of low-amplitude potentials <40 μV (LAS 40). Abnormal SAECG findings were defined if 2 of the following 3 parameter conditions were observed: fQRS ≥ 114 ms, RMS 40 < 20 μV, and LAS 40 > 38 ms [18]; additionally, the combination of RMS 40 < 20 μV and LAS 40 > 38 ms indicated abnormal findings for patients with a QRS complex ≥ 120 ms.



**Fig. 1** Patient flow chart for this study. CRT-D, cardiac resynchronization therapy with a defibrillator; HF, heart failure; ICD, implantable cardioverter defibrillator; LVEF, left ventricular ejection fraction; SAECG, signal-averaged electrocardiography

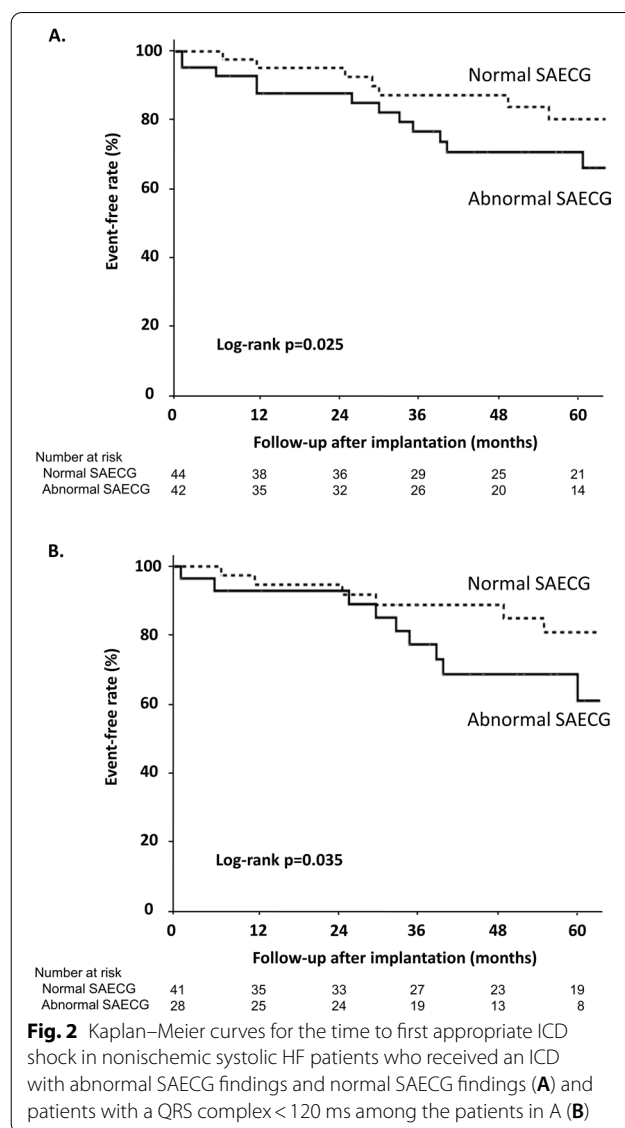
**Statistical analysis**

Data are presented as medians with interquartile ranges or number of patients (percentage). Baseline clinical and electrocardiographic data were compared between groups with abnormal and normal SAECG findings using the Mann–Whitney U test. Categorical variables were subjected to chi-squared analysis. Cumulative proportions of the event-free rate were calculated using the Kaplan–Meier method, and differences in event-free rates were compared using the log-rank test. Univariate Cox regression analysis was applied to estimate the relationship between SAECG findings and appropriate or inappropriate shocks. Multivariate analyses using the Cox proportional hazards model were performed to assess predictors of appropriate shocks from the following variables and abnormal SAECG findings: age, male sex, LVEF ≤ 30%, NYHA functional class II, estimated glomerular filtration rate (eGFR) according to the Modification of Diet in Renal Disease formula < 60 ml/min/1.73 m<sup>2</sup>, atrial fibrillation, beta-blocker use, digoxin use, and amiodarone use. The forward stepwise method was used for the multivariate analyses with a p value threshold set at 0.05. Data analyses were performed with IBM SPSS statistical software (version 22.0, IBM corporation, Armonk, NY, USA).

**Results**

The baseline clinical characteristics of the patients are summarized in Table 1. Forty-two patients met the criteria for abnormal SAECG findings (49%). The QRS duration was longer in patients with abnormal SAECG findings than in those with normal SAECG findings, and a QRS duration ≥ 120 ms was more frequent in patients with abnormal SAECG findings than in those with normal SAECG findings. There were no differences in the types of QRS complexes between patients with and without abnormal SAECG findings. Patients with abnormal SAECG findings were likely to use digoxin and amiodarone.

During a median follow-up period of 61 (36–94) months, 17 patients (20%) died (8 patients with normal SAECG findings and 9 patients with abnormal SAECG findings), 24 (28%) received appropriate shock therapy (6 patients with normal SAECG findings and 16 patients with abnormal SAECG findings), and 19 (22%) received inappropriate shock therapy (8 patients with normal SAECG findings and 11 patients with abnormal SAECG findings). Detailed numbers of appropriate ATPs/shocks in patients who received ICD therapies are listed in Additional file 1: Table S2. Appropriate ICD shocks were less frequent than appropriate ATPs for terminating ventricular tachyarrhythmias in both patients with normal and patients with abnormal SAECG findings. The median



numbers of appropriate shocks per patient was 4 and 2 in patients with normal and abnormal SAECG findings, respectively, and the median numbers of inappropriate shocks per patient was 1 and 3 in patients with normal and abnormal SAECG findings, respectively (Additional file 1: Table S3).

Kaplan–Meier curves for the time to first appropriate ICD shock are shown in Fig. 2. There was a significantly higher incidence of appropriate shocks in patients with abnormal SAECG findings than in patients with normal SAECG findings, even when limited to patients with a QRS complex < 120 ms. Among 17 patients with a QRS complex ≥ 120 ms, 14 (82%) patients met both the RMS 40 and LAS 40 criteria, and 7 of these 14 patients with abnormal SAECG findings experienced

**Table 1** Patient characteristics

| Variables                                       | Normal SAECG<br>(n = 44) | Abnormal SAECG<br>(n = 42) | P-value |
|---|--------------------------|----------------------------|---------|
| Age, years                                      | 57 [40–67]               | 55 [43–66]                 | 0.653   |
| Men, n (%)                                      | 30 (68)                  | 32 (76)                    | 0.408   |
| Systolic blood pressure, mmHg                   | 106 [98–122]             | 102 [96–120]               | 0.838   |
| Diastolic blood pressure, mmHg                  | 60 [56–68]               | 60 [54–70]                 | 0.865   |
| Body mass index, kg/m <sup>2</sup>              | 23.4 [19.6–24.9]         | 21.1 [19.3–25.1]           | 0.534   |
| LVEF, %   | 27 [23–32]               | 26 [19–30]                 | 0.079   |
| Nonsustained VT, n (%)                          | 42 (98)                  | 41 (98)                    | 0.987   |
| Underlying heart disease                        |                          |                            | 0.390   |
| Idiopathic dilated cardiomyopathy               | 35 (80)                  | 34 (80)                    |         |
| End-stage hypertrophic cardiomyopathy           | 1 (2)                    | 0 (0)                      |         |
| Valvular heart disease                          | 0 (0)                    | 2 (5)                      |         |
| Cardiac sarcoidosis                             | 1 (2)                    | 2 (5)                      |         |
| Arrhythmogenic right ventricular cardiomyopathy | 0 (0)                    | 2 (5)                      |         |
| Congenital heart disease                        | 1 (2)                    | 1 (2)                      |         |
| Others  | 6 (14)                   | 1 (2)                      |         |
| NYHA functional class II/III/IV                 | 39/4/1                   | 38/4/0                     | 0.617   |
| Plasma BNP, pg/mL                               | 211 [98–502]             | 223 [98–492]               | 0.986   |
| eGFR, mL/min/1.73 m <sup>2</sup>                | 80 [49–105]              | 80 [62–96]                 | 0.873   |
| 12-lead electrocardiography                     |                          |                            |         |
| Atrial fibrillation                             | 7 (16)                   | 10 (24)                    | 0.358   |
| Heart Rate, bpm                                 | 71 [65–77]               | 65 [59–79]                 | 0.289   |
| QTc, ms   | 447 [418–480]            | 434 [400–461]              | 0.171   |
| QRS duration, ms                                | 103 [95–110]             | 111 [98–121]               | 0.049   |
| QRS ≥ 120 ms                                    | 3 (7)                    | 14 (33)                    | 0.004   |
| Types of QRS complexes                          |                          |                            | 0.401   |
| Narrow (≤ 100 ms)                               | 19 (43)                  | 15 (36)                    |         |
| L-IVCD  | 17 (39)                  | 13 (31)                    |         |
| O-IVCD  | 6 (14)                   | 7 (17)                     |         |
| LBBB  | 0                        | 1 (2)                      |         |
| RBBB  | 2 (5)                    | 6 (14)                     |         |
| Medications                                     |                          |                            |         |
| Beta-blockers                                   | 39 (89)                  | 37 (88)                    | 0.938   |
| ACE inhibitors/ARBs                             | 41 (93)                  | 39 (93)                    | 0.953   |
| MRAs  | 30 (68)                  | 27 (64)                    | 0.702   |
| Digoxin   | 9 (20)                   | 21 (50)                    | 0.004   |
| Amiodarone                                      | 17 (39)                  | 25 (60)                    | 0.053   |

Values are number (%) or median [interquartile range]

ACE angiotensin-converting enzyme; ARB angiotensin II receptor blocker; BNP B-type natriuretic peptide; eGFR estimated glomerular filtration rate; LBBB left bundle branch block; L-IVCD intraventricular conduction delay with left ventricular branch block-predominant feature; LVEF left ventricular ejection fraction; MRA mineralocorticoid receptor antagonist; NYHA New York Heart Association; O-IVCD intraventricular conduction delay with non-left bundle branch block-predominant feature; QTc corrected QT interval; RBBB right bundle branch block; SAECG signal-averaged electrocardiography; VT ventricular tachycardia

appropriate shocks, while 1 of 3 patients without abnormal SAECG findings experienced appropriate shocks. Univariate analysis for SAECG findings and appropriate shocks showed that abnormal SAECG findings were significantly related to appropriate ICD shocks. For each item of SAECG,  $fQRS \geq 114$  ms,  $RMS 40 < 20$   $\mu V$  and  $LAS > 38$  ms were significantly related to appropriate ICD

shocks. However, abnormal SAECG findings were not related to inappropriate ICD shocks (Table 2). Multivariate analysis revealed that abnormal SAECG findings and an  $eGFR < 60$  mL/min/1.73 m<sup>2</sup> were high-risk factors for appropriate shocks (Table 3).

Kaplan–Meier curves for all-cause death are depicted in Fig. 3. There was no difference in the incidence of

**Table 2** Abnormal SAECG and ICD shocks

|                             | HR   | 95% CI     | P-value |
|-----------------------------|------|------------|---------|
| <i>Appropriate shocks</i>   |      |            |         |
| Abnormal SAECG              | 2.56 | 1.09–6.01  | 0.031   |
| fQRS ≥ 114 ms*              | 4.33 | 1.24–15.11 | 0.021   |
| RMS 40 < 20 μV              | 2.60 | 1.11–6.11  | 0.028   |
| LAS 40 > 38 ms              | 2.39 | 1.02–5.61  | 0.044   |
| <i>Inappropriate shocks</i> |      |            |         |
| Abnormal SAECG              | 1.52 | 0.61–3.77  | 0.372   |
| fQRS ≥ 114 ms*              | 0.51 | 0.17–1.53  | 0.233   |
| RMS 40 < 20 μV              | 1.21 | 0.49–2.99  | 0.674   |
| LAS 40 > 38 ms              | 1.45 | 0.58–3.62  | 0.422   |

CI confidence interval; fQRS filtered QRS duration; HR hazard ratio; LAS 40 duration of low-amplitude potentials < 40 μV; RMS 40 root-mean-square voltage in the last 40 ms of the fQRS; SAECG signal-averaged electrocardiogram

\*Patients with QRS complex < 120 ms

all-cause death between patients with abnormal and normal SAECG findings. Among the patients who died, the most common cause of death was HF (Table 4).

**Discussion**

Our study showed a higher incidence of appropriate shocks in patients with abnormal SAECG findings than in patients with normal SAECG findings among primary prophylactic ICD patients with nonischemic systolic HF. This relationship was observed in all patients and even in patients with a QRS complex < 120 ms. Abnormal SAECG findings were independently associated with the occurrence of appropriate shocks.

Abnormal SAECG findings denote the presence of depolarization abnormalities and an arrhythmic substrate in the ventricle, leading to the development of ventricular tachyarrhythmia [10]. In the 1990s, abnormal SAECG findings were reported to predict VT/VF and/or all-cause death in patients with nonischemic dilated cardiomyopathies [11, 12]. Since then, abnormal SAECG findings have been found to fail to predict death due to VT/VF, including appropriate ICD therapy or death, in patients with nonischemic dilated cardiomyopathies [10, 13, 19]. Overall, the treatment of HF, including beta-blocker therapy, has greatly progressed in the past two decades, and the rate of SCD has declined due to thorough evidence-based HF drug therapy development from the 1990s to 2000s [20]. Currently, it is difficult to distinguish high-risk patients from extensive HF patients using SAECG alone because of its low accuracy.

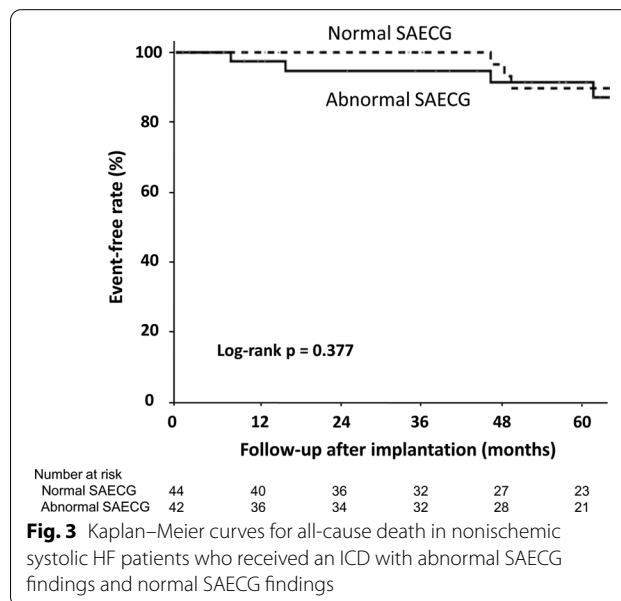
Recent progress in device programming has helped prevent the delivery of unnecessary ICD shocks. In this study, appropriate ICD shocks were less frequent than

**Table 3** Univariate and multivariate analyses for appropriate ICD shock

|                                      | Univariate       |         | Multivariate     |         |
|--------------------------------------|------------------|---------|------------------|---------|
|                                      | HR (95%CI)       | P-value | HR (95%CI)       | P-value |
| Abnormal SAECG                       | 2.56 (1.09–6.01) | 0.031   | 2.67 (1.14–6.26) | 0.024   |
| Age (1 year increase)                | 1.00 (0.98–1.03) | 0.907   |                  |         |
| Male gender                          | 1.74 (0.65–4.69) | 0.272   |                  |         |
| LVEF ≤ 30%                           | 2.15 (0.80–5.78) | 0.128   |                  |         |
| NYHA class II                        | 0.57 (0.13–2.49) | 0.457   |                  |         |
| eGFR < 60 mL/min/1.73 m <sup>2</sup> | 2.48 (1.09–5.65) | 0.030   | 2.61 (1.15–5.92) | 0.021   |
| Atrial fibrillation                  | 1.63 (0.70–3.82) | 0.258   |                  |         |
| Beta-blocker use                     | 1.02 (0.24–4.34) | 0.983   |                  |         |
| Digoxin use                          | 1.20 (0.52–5.78) | 0.128   |                  |         |
| Amiodarone use                       | 1.23 (0.54–2.79) | 0.629   |                  |         |

ACE angiotensin-converting enzyme; ARB angiotensin II receptor blocker; CI confidence interval; eGFR estimated glomerular filtration rate; HR hazard ratio; ICD implantable cardioverter defibrillator; LVEF left ventricular ejection fraction; MRA mineralocorticoid receptor antagonist; NYHA New York heart association; SAECG signal-averaged electrocardiography

appropriate ATPs even in patients with both normal and abnormal SAECG findings. ICD shock delivery could be avoided with the ATP setting and delayed high-rate programming. Nevertheless, abnormal SAECG findings were a significant risk factor for appropriate shock therapy in high-risk patients with nonischemic HF who received primary prophylactic ICD in accordance with guideline recommendations. The incidence of appropriate shock



**Fig. 3** Kaplan–Meier curves for all-cause death in nonischemic systolic HF patients who received an ICD with abnormal SAECG findings and normal SAECG findings

**Table 4** Causes of death

|                         | Normal<br>SAECG<br>(n = 44) | Abnormal<br>SAECG<br>(n = 42) | P-value |
|-------------------------|-----------------------------|-------------------------------|---------|
| Death from any cause    | 8                           | 9                             | 0.457   |
| Cardiovascular death    |                             |                               | 0.232   |
| SCD/arrhythmia          | 1                           | 1                             |         |
| Heart failure           | 4                           | 8                             |         |
| Noncardiovascular death | 2                           | 0                             |         |
| Unknown                 | 1                           | 0                             |         |

SAECG signal-averaged electrocardiography; SCD: sudden cardiac death

therapy was higher in patients with abnormal SAECG findings than in those with normal SAECG findings, among whom most received renin-angiotensin system inhibitors and beta-blockers.

Previous reports have shown that a longer QRS duration is associated with increased risks for all-cause death, SCD and cardiac death in patients with HF [21]. In this study, in nonischemic HF patients with a QRS complex < 120 ms, there was a relationship between abnormal SAECG findings and appropriate ICD shock using conventional SAECG criteria. Approximately 20% of our patients had a QRS complex  $\geq$  120 ms. Most previous studies using SAECG excluded patients with a wide QRS complex, such as those with bundle branch block, and patients receiving ventricular pacing. A small study proposed modified SAECG criteria for identifying patients with induced or spontaneous VT among those with longer QRS complex durations (> 100 ms), although the majority of cases involved an ischemic etiology [22]. Another study proposed modified SAECG criteria, but the predictive values for SCD and cardiac death were low in nonischemic dilated cardiomyopathies despite the presence of a bundle branch block [23]. In clinical practice, however, it can be cumbersome to set different reference values for subjects with different clinical backgrounds. Therefore, for patients with a QRS complex  $\geq$  120 ms, we used conventional cutoff values for both the RMS40 and LAS40 parameters, excluding fQRS, and abnormal SAECG findings were defined if both parameters were abnormal in this study. Among patients with a QRS complex  $\geq$  120 ms, approximately 80% met the criteria for abnormal SAECG findings, and half of them experienced appropriate ICD shocks. In addition, the prolongation of the QRS duration reflects a left ventricular conduction delay, which is associated with left ventricular function and volume [21, 24] but indicates more than the focal late potential in HF patients. Therefore, it may be appropriate to define abnormal SAECG findings

with two parameters, namely, RMS 40 and LAS 40, and exclude fQRS in patients with a QRS complex  $\geq$  120 ms.

The Coronary Artery Bypass Graft (CABG) Patch Trial, which included ischemic patients who underwent elective coronary bypass surgery and had a high risk for SCD, LVEF < 36% and abnormal SAECG findings, showed no survival benefit of implanting a prophylactic ICD at the time of surgery [25]. In the CABG Patch Trial, ICD therapy tended to reduce arrhythmic death ( $p = 0.057$ ), but the differences in all-cause mortality did not reach significance because 71% of deaths were due to nonarrhythmic causes [26]. In our study, because approximately 90% of the deaths were due to nonarrhythmic causes, including HF and noncardiac causes, the presence of abnormal SAECG findings associated with life-threatening arrhythmia had little contribution to all-cause death. Therefore, abnormal SAECG findings alone might not affect all-cause death.

The complex interactions of an arrhythmogenic substrate with several triggers and modulators, such as autonomic tone, myocardial ischemia, electrolyte disturbance and worsening HF, contribute to the development of VT/VF. The late potential at the terminal part of the QRS complex may indicate the presence of a delay in myocardial conduction in the reentrant circuit as an arrhythmogenic substrate. The presence of an arrhythmogenic substrate is a predictor of VT/VF, and its disappearance can indicate a therapeutic effect on VT/VF. Previous reports have demonstrated that surgical or ablation treatment for VT normalizes SAECG findings and that patients with normalized SAECG findings after such procedures showed favorable outcomes compared to patients with persistent abnormal SAECG findings [27, 28]. Thus, the presence of ventricular late potential, which shows an arrhythmogenic substrate, may have a role in predicting the occurrence of VT/VF requiring ICD shocks in high-risk patients.

Among patients with abnormal SAECG findings, arrhythmogenic right ventricular cardiomyopathy or cardiac sarcoidosis was also present in a small number. This might be because patients with these cardiomyopathies are at increased risk and ventricular arrhythmias and SCD [29, 30] and because abnormal SAECG findings collectively serve as a useful diagnostic tool for detecting these cardiomyopathies [29, 31]. In this study, digoxin and amiodarone tended to be more frequently used among patients with abnormal SAECG findings than among patients with normal SAECG findings, but the use of both drugs did not affect the delivery of an appropriate shock. Although there has been no report that digoxin directly affects the SAECG findings, the use of digoxin may increase the frequency of ICD shocks [32]. On the other hand, amiodarone

prolongs the fQRS and LAS 40 and decreases RMS 40, leading to abnormal SAECG findings [33], which have been reported to predict the effects of amiodarone in patients with myocardial infarction and VT [34]. Amiodarone might partially contribute to the expression of abnormal SAECG findings, but SAECG did not have enough power to predict the potential effects of drug treatments such as digoxin and amiodarone in high-risk patients with nonischemic HF.

In this study, an eGFR < 60 mL/min/1.73 m<sup>2</sup>, as well as abnormal SAECG findings, were independent predictive factors for ICD shock. Renal dysfunction is known to be a potential risk factor for SCD [35]. We previously reported that renal dysfunction with an eGFR < 60 mL/min/1.73 m<sup>2</sup> was an independent predictor of appropriate ICD therapy in patients with nonischemic HF [36]. Identifying patients who are likely to receive appropriate shock and require management for the prevention of VT/VF is important for improving the survival of patients with HF and ICDs.

Currently, the most widely used criterion for implanting prophylactic ICDs in patients with HF is LVEF ≤ 35%, but there are certainly limitations in term of risk stratification. In 2016, the Danish Study to Assess the Efficacy of ICDs in Patients with Non-ischemic Systolic Heart Failure on Mortality (DANISH) showed that ICD implantation did not improve outcomes in patients with nonischemic HF and LVEF ≤ 35% [37], and the frequency of SCD has been decreasing as optimal HF medical therapies have become more thorough [20]. At present, the contribution of ICD therapy to improving outcomes in patients with systolic HF may diminish compared to the 2000s. Additionally, since ICDs also have negative risks, such as reduced quality of life, several complications associated with implantation/replacement, risk of device infection and inappropriate shocks, indications for ICDs must be more risk stratified. Therefore, identifying more accurate predictors of ventricular tachyarrhythmias in high-risk patients is needed. Although this is a small study from a single center, measuring SAECG values in addition to conventional risk factors may allow stratification of patients according to the risk for life-threatening arrhythmias associated with HF.

### Study limitations

There are some limitations in this study. First, this was a retrospective observational study conducted at a single center. Data concerning clinical conditions at the time of ICD therapy or death were not available, and treatment bias was present. Second, the diagnostic value of the RMS 40 and LAS 40 criteria in the ability of SAECG to detect the probability of SCD or death has not yet been

established for patients with a wide QRS complex. However, the significant results in our patients with wide QRS complexes using conventional cutoff values for these SAECG parameters may be a useful reference in clinical practice, but these findings should be confirmed in other patient populations. Third, the number of patients was relatively small. Therefore, subgroup analyses were not feasible. Fourth, the ICD detection thresholds programmed for the VF zone and VT zone and ICD therapy settings, including anti-tachycardia pacing and shock, were not identical. Finally, during the long follow-up period of this study, a consensus on delayed high-rate programming was reached, and the use of this programming increased over the years. For this reason, we could not rule out the possibility that some unnecessary shocks that can be avoided by modern programming were partially counted as appropriate shocks in subjects in the 2000s.

### Conclusions

Our results suggest that abnormal SAECG findings are associated with a high risk of appropriate shocks in patients with prophylactic ICDs and nonischemic systolic HF.

### Abbreviations

ATP: Antitachycardia pacing; CABG: Coronary artery bypass graft; DANISH: Danish study to assess the efficacy of ICDs in patients with non-ischemic systolic heart failure on mortality; eGFR: Estimated glomerular filtration rate; EU-CERT-ICD: European comparative effectiveness research to assess the use of primary prophylactic implantable cardioverter-defibrillators; fQRS: Filtered QRS duration; HF: Heart failure; ICD: Implantable cardioverter defibrillator; IVCD: Intraventricular conduction delay; LAS 40: Duration of low-amplitude potentials < 40 μV; LBBB: Left bundle branch block; L-IVCD: Intraventricular conduction delay with a left bundle branch block-predominant feature; LVEF: Left ventricular ejection fraction; NYHA: New York Heart association; O-IVCD: Intraventricular conduction delay with non-left bundle branch block-predominant feature; RBBB: Right bundle branch block; RMS 40: Root-mean-square voltage during the last 40 ms of the fQRS; SAECG: Signal-averaged electrocardiography; SCD: Sudden cardiac death; VF: Ventricular fibrillation; VT: Ventricular tachycardia.

### Supplementary Information

The online version contains supplementary material available at <https://doi.org/10.1186/s12872-022-02811-6>.

**Additional file 1: Table S1.** Device programming according to date of ICD implantation. **Table S2.** Number of appropriate ATPs/Shocks in patients who experienced ICD therapies. **Table S3.** Incidence of ICD shocks in patients with normal and abnormal SAECG findings.

### Acknowledgements

We thank Mr. Koichi Takeuchi for his assistance.

### Author contributions

MN, AS and TS conceived and designed the study. MN and AS collected and organized the patient data from patient files. AS analyzed the data. MS and NH contributed to interpretation of the data. TS was a major contributor to



the writing of the manuscript. All the authors read and approved the final manuscript.

#### Funding

This study was supported by the Japan Agency for Medical Research and Development (JP15ek0210009).

#### Availability of data and materials

The datasets generated and/or analyzed during the current study are not publicly available due to privacy or ethical restrictions but are available from the corresponding author on reasonable request.

#### Declarations

##### Ethics approval and consent to participate

This study was approved by the institutional review board of Tokyo Women's Medical University (4152-R2). The requirement to obtain written and verbal informed consent was waived by institutional review board of Tokyo Women's Medical University due to the nature of the retrospective study. The study received ethical approval for the use of an opt-out approach to consent. This study was conducted in compliance with the Ethical Guidelines for Medical and Biological Research Involving Human Subjects issued by the Japanese Ministry of Health, Labour and Welfare and the Declaration of Helsinki.

##### Consent for publication

Not applicable.

##### Competing interests

MS is a professor in an endowed department that is supported by unrestricted grants from Medtronic, Boston-Scientific, Biotronik and St Jude Medical. The other authors declare that there are no competing interests.

##### Author details

<sup>1</sup>Department of Cardiology, Tokyo Women's Medical University, Tokyo, Japan.

<sup>2</sup>Department of Clinical Pharmacology and Therapeutics, The Jikei University School of Medicine, 3-25-8 Nishi-shinbashi, Minato-ku, Tokyo 105-8461, Japan.

<sup>3</sup>Clinical Research Division for Heart Rhythm Management, Tokyo Women's Medical University, Tokyo, Japan.

Received: 20 February 2022 Accepted: 8 August 2022

Published online: 16 August 2022

#### References

- Moss AJ, Hall WJ, Cannom DS, Daubert JP, Higgins SL, Klein H, Multi-center Automatic Defibrillator Implantation Trial Investigators, et al. Improved survival with an implanted defibrillator in patients with coronary disease at high risk for ventricular arrhythmia. *N Engl J Med*. 1996;335(26):1933–40.
- Moss AJ, Zareba W, Hall WJ, Klein H, Wilber DJ, Cannom DS, Multicenter Automatic Defibrillator Implantation Trial II Investigators, et al. Prophylactic implantation of a defibrillator in patients with myocardial infarction and reduced ejection fraction. *N Engl J Med*. 2002;346(12):877–83.
- Bardy GH, Lee KL, Mark DB, Poole JE, Packer DL, Boineau R, Sudden Cardiac Death in Heart Failure Trial (SCD-HeFT) Investigators, et al. Amiodarone or an implantable cardioverter-defibrillator for congestive heart failure. *N Engl J Med*. 2005;352(3):225–37.
- Moss AJ, Greenberg H, Case RB, Zareba W, Hall WJ, Brown MW, Multi-center Automatic Defibrillator Implantation Trial-II (MADIT-II) Research Group, et al. Long-term clinical course of patients after termination of ventricular tachyarrhythmia by an implanted defibrillator. *Circulation*. 2004;110(25):3760–5.
- Daubert JP, Zareba W, Cannom DS, McNitt S, Rosero SZ, Wang P, MADIT II Investigators, et al. Inappropriate implantable cardioverter-defibrillator shocks in MADIT II: frequency, mechanisms, predictors, and survival impact. *J Am Coll Cardiol*. 2008;51(14):1357–65.
- Poole JE, Johnson GW, Hellkamp AS, Anderson J, Callans DJ, Raitt MH, et al. Prognostic importance of defibrillator shocks in patients with heart failure. *N Engl J Med*. 2008;359(10):1009–17.
- Aktaş MK, Younis A, Zareba W, Kutuyifa V, Klein H, Daubert JP, et al. Survival after implantable cardioverter-defibrillator shocks. *J Am Coll Cardiol*. 2021;77(20):2453–62.
- Shiga T, Suzuki T, Nishimura K. Psychological distress in patients with an implantable cardioverter defibrillator. *J Arrhythm*. 2013;29(6):310–3.
- Zabel M, Willems R, Lubinski A, Bauer A, Brugada J, Conen D, EU-CERT-ICD Study Investigators, et al. Clinical effectiveness of primary prevention implantable cardioverter-defibrillators: results of the EU-CERT-ICD controlled multicentre cohort study. *Eur Heart J*. 2020;41(36):3437–47.
- Goldberger JJ, Cain ME, Hohnloser SH, Kadish AH, Knight BP, Lauer MS, et al. American heart association/American college of cardiology foundation/heart rhythm society scientific statement on noninvasive risk Stratification techniques for identifying patients at risk for sudden cardiac death. A scientific statement from the American heart association council on clinical cardiology committee on electrocardiography and arrhythmias and council on epidemiology and prevention. *J Am Coll Cardiol*. 2008;52(14):1179–99.
- Mancini DM, Wong KL, Simson MB. Prognostic value of an abnormal signal-averaged electrocardiogram in patients with nonischemic congestive cardiomyopathy. *Circulation*. 1993;87(4):1083–92.
- Fauchier L, Babuty D, Cosnay P, Poret P, Rouesnel P, Fauchier JP. Long-term prognostic value of time domain analysis of signal-averaged electrocardiography in idiopathic dilated cardiomyopathy. *Am J Cardiol*. 2000;85(5):618–23.
- Goedel-Meinen L, Hofmann M, Ryba S, Schömig A. Prognostic value of an abnormal signal-averaged electrocardiogram in patients with nonischemic dilated cardiomyopathy. *Am J Cardiol*. 2001;87(6):809–12.
- Epstein AE, DiMarco JP, Ellenbogen KA, Estes NA 3rd, Freedman RA, Gettes LS, et al. ACC/AHA/HRS 2008 guidelines for device-based therapy of cardiac rhythm abnormalities: a report of the American college of cardiology/American heart association task force on practice guidelines (writing committee to revise the ACC/AHA/NASPE 2002 guideline update for implantation of cardiac pacemakers and antiarrhythmia devices): developed in collaboration with the American association for thoracic surgery and society of thoracic surgeons. *Circulation*. 2008;117(21):e350–408.
- JCS Joint Working Group. Guidelines for non-pharmacotherapy of cardiac arrhythmias (JCS 2011). *Circ J*. 2013;77(1):249–74.
- Kiehl EL, Menon V, Mandsager KT, Wolski KE, Wisniewski L, Nissen SE, et al. Effect of left ventricular conduction delay on all-cause and cardiovascular mortality (from the PRECISION Trial). *Am J Cardiol*. 2019;124(7):1049–55.
- Wilkoff BL, Fauchier L, Stiles MK, Morillo CA, Al-Khatib SM, Almendral J, et al. 2015 HRS/EHRA/APHS/SOLAECE expert consensus statement on optimal implantable cardioverter-defibrillator programming and testing. *Heart Rhythm*. 2016;13(2):e50–86.
- Breithardt G, Cain ME, El-Sherif N, Flowers NC, Hombach V, Janse M, et al. Standards for analysis of ventricular late potentials using high-resolution or signal-averaged electrocardiography: a statement by a task force committee of the European society of cardiology, the American heart association, and the American college of cardiology. *J Am Coll Cardiol*. 1991;17(5):999–1006.
- Yi G, Hnatkova K, Mahon NG, Keeling PJ, Reardon M, Camm AJ, et al. Predictive value of wavelet decomposition of the signal-averaged electrocardiogram in idiopathic dilated cardiomyopathy. *Eur Heart J*. 2000;21(12):1015–22.
- Shen L, Jhund PS, Petrie MC, Claggett BL, Barlera S, Cleland JGF, et al. Declining risk of sudden death in heart failure. *N Engl J Med*. 2017;377(1):41–51.
- Kashani A, Barold SS. Significance of QRS complex duration in patients with heart failure. *J Am Coll Cardiol*. 2005;46(12):2183–92.
- Gatzoulis KA, Carlson MD, Biblo LA, Rizos I, Gialafos J, Toutouzas P, et al. Time domain analysis of the signal averaged electrocardiogram in patients with a conduction defect or a bundle branch block. *Eur Heart J*. 1995;16(12):1912–9.
- Brembilla-Perrot B, de la Terrier CA, Jacquemin L, Beurrier D, Houplon P. The signal-averaged electrocardiogram is of limited value in patients with bundle branch block and dilated cardiomyopathy in predicting inducible ventricular tachycardia or death. *Am J Cardiol*. 1997;79(2):154–9.
- Stewart RA, Young AA, Anderson C, Teo KK, Jennings G, Cowan BR. Relationship between QRS duration and left ventricular mass and volume in patients at high cardiovascular risk. *Heart*. 2011;97(21):1766–70.

25. Bigger JT Jr. Prophylactic use of implanted cardiac defibrillators in patients at high risk for ventricular arrhythmias after coronary-artery bypass graft surgery. Coronary artery bypass graft (CABG) patch trial investigators. *N Engl J Med*. 1997;337(22):1569–75.
26. Bigger JT Jr, Whang W, Rottman JN, Kleiger RE, Gottlieb CD, Namerow PB, et al. Mechanisms of death in the CABG Patch trial: a randomized trial of implantable cardiac defibrillator prophylaxis in patients at high risk of death after coronary artery bypass graft surgery. *Circulation*. 1999;99(11):1416–21.
27. Marcus NH, Falcone RA, Harken AH, Josephson ME, Simson MB. Body surface late potentials: effects of endocardial resection in patients with ventricular tachycardia. *Circulation*. 1984;70(4):632–7.
28. Dinov B, Bode K, Koenig S, Oebel S, Sommer P, Bollmann A, et al. Signal-averaged electrocardiography as a noninvasive tool for evaluating the outcomes after radiofrequency catheter ablation of ventricular tachycardia in patients with ischemic heart disease: reassessment of an old tool. *Circ Arrhythm Electrophysiol*. 2016;9(9):e003673.
29. Marcus FI, McKenna WJ, Sherrill D, Basso C, Bauce B, Bluemke DA, et al. Diagnosis of arrhythmogenic right ventricular cardiomyopathy/dysplasia: proposed modification of the task force criteria. *Circulation*. 2010;121(13):1533–41.
30. Okada DR, Smith J, Derakhshan A, Gowani Z, Misra S, Berger RD, Calkins H, Tandri H, Chrispin J. Ventricular arrhythmias in cardiac sarcoidosis. *Circulation*. 2018;138(12):1253–64.
31. Schuller JL, Lowery CM, Zipse M, Aleong RG, Varosy PD, Weinberger HD, et al. Diagnostic utility of signal-averaged electrocardiography for detection of cardiac sarcoidosis. *Ann Noninvasive Electrocardiol*. 2011;16(1):70–6.
32. Mina GS, Acharya M, Shepherd T, Gobrial G, Tekeste M, Watti H, et al. Digoxin is associated with increased shock events and electrical storms in patients with implantable cardioverter defibrillators. *J Cardiovasc Pharmacol Ther*. 2018;23(2):142–8.
33. Borbola J, Denes P. Oral amiodarone loading therapy. I. The effect on serial signal-averaged electrocardiographic recordings and the QTc in patients with ventricular tachyarrhythmias. *Am Heart J*. 1988;115(6):1202–8.
34. Brembilla-Perrot B, Claudon O, Houriez P, Beurrier D, Suty-Selton C. Absence of change of signal-averaged electrocardiogram identifies patients with ventricular arrhythmias who are non-responders to amiodarone. *Int J Cardiol*. 2002;83(1):47–55.
35. Boriani G, Savelieva I, Dan GA, Deharo JC, Ferro C, Israel CW, et al. Chronic kidney disease in patients with cardiac rhythm disturbances or implantable electrical devices: clinical significance and implications for decision making—a position paper of the European heart rhythm association endorsed by the heart rhythm society and the Asia pacific heart rhythm society. *Europace*. 2015;17(8):1169–96.
36. Takahashi A, Shiga T, Shoda M, Manaka T, Ejima K, Hagiwara N. Impact of renal dysfunction on appropriate therapy in implantable cardioverter defibrillator patients with non-ischaemic dilated cardiomyopathy. *Europace*. 2009;11(11):1476–82.
37. Køber L, Thune JJ, Nielsen JC, Haarbø J, Videbæk L, Korup E, et al. Defibrillator implantation in patients with nonischemic systolic heart failure. *N Engl J Med*. 2016;375(13):1221–30.

## Publisher's Note

Springer Nature remains neutral with regard to jurisdictional claims in published maps and institutional affiliations.

Ready to submit your research? Choose BMC and benefit from:

- fast, convenient online submission
- thorough peer review by experienced researchers in your field
- rapid publication on acceptance
- support for research data, including large and complex data types
- gold Open Access which fosters wider collaboration and increased citations
- maximum visibility for your research: over 100M website views per year

At BMC, research is always in progress.

Learn more [biomedcentral.com/submissions](https://biomedcentral.com/submissions)

