

RESEARCH ARTICLE

Open Access

# Red cell distribution width is associated with long-term prognosis in patients with stable coronary artery disease

Tadeusz Osadnik<sup>1\*</sup>, Joanna Strzelczyk<sup>2</sup>, Michał Hawranek<sup>1</sup>, Andrzej Lekston<sup>1</sup>, Jarosław Wasilewski<sup>1</sup>, Anna Kurek<sup>1</sup>, Aleksander Rafał Gutowski<sup>1</sup>, Krzysztof Wilczek<sup>1</sup>, Krzysztof Dyrbuś<sup>1</sup>, Marek Gierlotka<sup>1</sup>, Andrzej Wiczkowski<sup>2</sup>, Mariusz Gąsior<sup>1</sup>, Andrzej Szafranek<sup>1</sup> and Lech Poloński<sup>1</sup>

## Abstract

**Background:** Data regarding the association between red cell distribution width (RDW) values and mortality in patients with stable coronary artery disease are scarce. We aimed to investigate the link between mortality and RDW in patients with stable coronary artery disease undergoing percutaneous coronary intervention (PCI).

**Methods:** We analyzed 2550 consecutive patients with stable coronary artery disease who underwent PCI between 2007 and 2011 at our institution. The patients were divided into four groups according to RDW quartiles. The association between the RDW values and the outcomes was assessed using Cox proportional regression analysis after adjusting for clinical, echocardiographic, hemodynamic and laboratory data in the whole population and in subgroups stratified by gender, presence of diabetes, anemia or heart failure.

**Results:** In the entire population, there was a stepwise relationship between RDW intervals and comorbidities. Patients with the highest RDW values were older and more often burdened with diabetes, heart failure and chronic kidney disease. There was an almost 4-fold increase in mortality during an average of 2.5 years of follow-up between the group of patients with RDW values lower than 13.1% (25<sup>th</sup> percentile) and the group with RDW values higher than 14.1% (75<sup>th</sup> percentile), (4.3% vs. 17.1%,  $p < 0.0001$ ). After adjusting for the covariates, RDW remained significantly associated with mortality in the whole cohort (HR-1.23 [95% CI (1.13-1.35),  $p < 0.0001$ ]) and in the subgroups stratified by gender, age (over and under 75 years), presence of anemia, diabetes, heart failure and chronic kidney disease.

**Conclusion:** Higher RDW values correspond to higher comorbidity burdens and higher mortality. RDW is an independent predictor of mortality in patients with stable coronary artery disease.

**Keywords:** Red cell distribution width, Stable coronary artery disease, Prognosis

## Background

Red cell distribution width (RDW) is a numerical measure of erythrocyte variability and heterogeneity (i.e., anisocytosis). RDW is elevated in patients with anemia or thalassemia and after a blood transfusion or in the presence of iron deficiency [1]. The upper and lower limits of the RDW values were set at the 5<sup>th</sup> (11.0%) and 95<sup>th</sup>

(14.0%) percentiles in a population from a National Health and Nutrition Examination Survey III study. In recent years there have been studies referring to patients with heart failure [2], with acute coronary syndromes [3] and unselected patients undergoing percutaneous coronary intervention (PCI) [4,5] and various non-cardiological conditions [6-8]. To the best of our knowledge, there was only one smaller study referring to consecutive patients with stable coronary artery disease undergoing elective stent implantation with eight registered deaths in the 12 months follow-up [9], and two referring to subsets of patients with stable coronary artery

\* Correspondence: tadeusz.osadnik@sccs.pl

<sup>1</sup>Illrd Chair and Department of Cardiology, Silesian Centre for Heart Diseases, Medical University of Silesia in Katowice, Medical Faculty in Zabrze, Ul. Marii Skłodowskiej Curie 9, 41-800, Zabrze, Poland

Full list of author information is available at the end of the article

disease [10,11]. We aimed to investigate the link between mortality and RDW in the wide spectrum of patients with stable coronary artery disease undergoing PCI with stent implantation over long term follow-up.

## Methods

### Study group

Data from consecutive patients with stable coronary artery disease undergoing stent implantation between 2007 and 2011 at our institution (the Silesian Center for Heart Diseases) were analyzed. To identify patients with stable coronary artery disease, we screened all patients with the diagnosis codes of I25.0 and I25.2, as well as patients with other diagnoses who met the following criteria: i) elective hospital admission and ii) stent implantation. Patients undergoing concomitant transcatheter aortic valve implantation procedure, patients undergoing hybrid revascularization, and patients after orthotopic heart transplant were not considered in the first place. We have identified 2774 patients with stable coronary artery disease. Patients who died during hospitalization (n = 4), patients on dialysis (n = 11), those with advanced valve disease (n = 203), a history of cancer (n = 26) or other diseases potentially limiting survival (n = 18) were excluded from the analysis. Final cohort consisted of 2550 patients.

### Data source

Starting in 2006, it has been compulsory for every attending physician at our Institution to fill out a complex report form for all admitted patients. This report form includes clinical data, past medical history and performed procedures. The form includes detailed data on a patient's medical history and clinical characteristics at admission, and it resembles the cardiac report form used in clinical studies. Before patient documentation is given to the hospital information archive, the course of hospitalization is entered, and the report form is checked for completeness. Despite these strict measures, 11 (0.4%) patients were found to have missing data regarding information on the family history (FH) of premature coronary heart disease (CHD), Canadian Cardiovascular Society class, heart rate or systolic blood pressure (SBP) at admission. Data on ejection fraction were available for 2322 (91.1%) patients. Hemodynamic data were available for all patients and were taken from angiography descriptions. Creatinine, sodium levels and complete blood counts were available for all patients. The complete blood counts were performed using the Sysmex XS1000i and XE2100 (Sysmex Corporation, Kobe, Japan). Red cell distribution width (RDW) is calculated using the following formula:  $RDW = (\text{standard deviation of red blood cell corpuscular volume}) / (\text{mean corpuscular volume (MCV)}) \times 100 [\%]$ . The creation of

the database of patients with stable coronary artery disease used in this study was supported by the National Science Center – Dec-2011/01/D/NZ5/04387. Study was approved by ethics committee at district chamber of physicians.

### Statistical analysis

The continuous variables are presented as the means and standard deviations. The categorical variables are presented as percentages. Patients were divided into subgroups according to RDW quartiles. Group I (n = 607) comprised patients with an RDW < 13.1% (1<sup>st</sup> quartile), group II (n = 574) comprised patients with an RDW value of  $\geq 13.1\%$  and < 13.6% (2<sup>nd</sup> quartile), group III (n = 663) comprised patients with RDW values of  $\geq 13.6\%$  and < 14.1% (3<sup>rd</sup> quartile) and group IV (n = 706) comprised patients with RDW values  $\geq 14.1\%$  (4<sup>th</sup> quartile). To test for differences across all groups, the chi square and Kruskal-Wallis tests were used.

### Survival and regression analysis

The associations between the RDW quartiles and mortality were analyzed using the Kaplan-Meier method with log-rank testing. To assess the impact of the RDW on prognosis, a multivariate Cox regression analysis was performed. RDW was imputed as a continuous variable. To minimize the impact of missing data on the Cox regression analysis, the multiple imputation method was used to impute missing data for the variables that were to be included in the Cox regression procedures. The model was adjusted for age, sex, heart failure, atrial fibrillation, hypertension, previous myocardial infarction (MI), previous PCI, previous coronary artery bypass graft surgery (CABG), previous sudden cardiac death (SCD), peripheral vascular disease (PVD), previous stroke, diabetes, lipid abnormalities, obesity, chronic obstructive pulmonary disease (COPD), chronic kidney disease (CKD), smoking, New York Heart Association (NYHA) and CCS class, heart rate, blood pressure, ejection fraction, number and type(s) of stent implanted, number of PCI vessels, hemoglobin, MCV. Additionally stratified analyses according to gender, age (over or under 75 years) diabetes, CKD, anemia, and heart failure status were performed. Difference in Cox-model including aforementioned variables was compared with Cox model including additionally RDW using likelihood ratio test. Discriminative ability of those two models was assessed using Harrell's C-statistics [12]. We have also compared those models by means of Net Reclassification Improvement (NRI) and Integrated Discrimination Improvement (IDI). NRI estimates if the addition of new variable correctly increases or decreases the predicted risk for events and non-events [13-16]. We have calculated NRI using predicted probabilities estimated by Cox

regression analysis at the end of follow-up time. IDI describes differences in integrated sensitivity and integrated one minus specificity between models [13].

#### Follow-up data

Information on survival was based on the National Health Fund (NFZ) insurance status, which can be electronically verified. Because the NFZ insurance policy is obligatory for all Polish citizens, patients who were insured were marked as alive. We made

an attempt to contact the relatives of uninsured patients and/or the relevant local registry office to obtain the exact date of death. Follow-up data were available for 2535 (99.4%) of patients. The mean follow-up period was  $915.4 \pm 525.3$  days. During the observation period, there were 233 reported deaths. All reported p-values are two-sided. The analyses were performed using Number Crunching Statistical Systems 8.0 (NCSS, Kaysville, UT, USA) and in R software [17].

**Table 1 Baseline clinical characteristics by quartiles of RDW**

	<b>Group I</b> <b>N = 607</b> <b>&lt;13.1%</b>	<b>Group II</b> <b>N = 574</b> <b>13.1 ≥ and &lt;13.6%</b>	<b>Group III</b> <b>N = 663</b> <b>13.6% ≥ and &lt;14.1%</b>	<b>Group IV</b> <b>N = 706</b> <b>≥14.1</b>	<b>P value</b>
Age (yrs)	62.3 ± 9.5	63.3 ± 9.4	64.4 ± 9.3	65.6 ± 9.1	<0.0001
Men (%)	436 (71.8)	408 (71.1)	461 (69.5)	494 (70.0)	0.8
Heart failure	67 (11.0)	69 (12.0)	77 (11.7)	146 (20.7)	<0.0001
Atrial fibrillation	39 (6.4%)	50 (8.7%)	75 (11.3%)	123 (17.4)	<0.0001
Hypertension	428 (70.5)	431 (75.1)	477 (71.9)	491 (69.5)	0.15
Previous MI	343 (56.5%)	320 (55.7%)	373 (56.3%)	437 (61.9%)	0.07
Previous CABG	69 (11.4)	83 (14.5)	89 (13.4)	99 (14.0)	0.38
Previous PCI	307 (50.6)	274 (47.7)	306 (46.2)	367 (52.0)	0.08
Previous SCD	10 (1.6%)	20 (3.5)	21 (3.2)	26 (3.7)	0.14
PVD	24 (4.0)	34 (5.9)	37 (5.6)	47 (6.7)	0.19
Prev. Stroke/TIA	19 (3.1)	27 (4.7)	39 (5.9)	60 (8.5)	0.0003
CKD GFR < 60 ml/h/1.73 m <sup>2</sup>	40 (6.6)	59 (10.3)	91 (13.7)	137 (19.4)	<0.0001
Diabetes	210 (34.6)	215 (37.5)	238 (35.9)	280 (39.7)	0.26
Insulin	61 (10.0)	86 (15.0)	85 (12.8)	127 (18.0)	0.0004
Lipid abnormalities	363 (59.8)	357 (62.2)	387 (58.4)	353 (50.0)	<0.0001
Obesity	203 (33.4)	192 (33.4)	234 (35.3)	252 (35.7)	0.75
COPD	32 (5.3)	35 (6.1)	45 (6.8)	79 (11.2)	0.0001
Current smoker	59 (9.7)	65 (11.3)	73 (11.0)	85 (12.0)	0.68
Previous smoker	202 (33.3%)	196 (34.1)	226 (34.1)	259 (36.7)	0.67
FH of premature CHD	65 (10.7)	48 (8.4)	70 (10.6)	47 (6.7)	0.11
NYHA class III/IV	28 (4.6%)	40 (7.0%)	33 (5.0%)	86 (12.2%)	<0.0001
Disabling angina (CCS III/IV)	97 (16.0)	92 (16.0)	115 (17.3)	115 (16.3)	0.9
HR (1/min)	69.3 ± 10.9	70.2 ± 11.4	71.9 ± 11.8	73.0 ± 12.9	<0.0001
SBP (mmHg)	133 ± 19.7	133.0 ± 19.7	132.3 ± 18.5	132 ± 20.6	0.65
DBP (mmHg)	79.3 ± 10.8	78.9 ± 11.3	78.8 ± 10.6	78.4 ± 12.0	0.20
Sinus rhythm -	588 (96.9)	547 (95.3)	620 (93.5)	632 (89.5)	<0.0001
Ejection fraction (%)	46.7 ± 9.7	47.8 ± 9.48	46.4 ± 10.0	43.8 ± 11.4	<0.0001
BMS	253 (41.7%)	284 (49.5%)	387 (58.4%)	435 (61.6%)	<0.0001
MVD	68 (11.2)	92 (16.0)	106 (16.0)	113 (16.0)	0.04
No. of PCI vessels	1.2 ± 0.5	1.2 ± 0.5	1.2 ± 0.5	1.3 ± 0.5	0.82
No. of stents	1.4 ± 0.7	1.4 ± 0.7	1.3 ± 0.6	1.4 ± 0.7	0.41

MI – myocardial infarction, CABG – coronary artery bypass graft, PCI – percutaneous coronary intervention, SCD – sudden cardiac death, PVD – peripheral vascular disease, FH – family history, CKD – chronic kidney disease, CHD – coronary heart disease, NYHA – New York Heart Association class, CCS – Canadian Cardiovascular Society class, HR – heart rate, SBP – systolic blood pressure, DBP – diastolic blood pressure, BMS – bare metal stent, MVD – multivessel disease.

**Table 2 Laboratory findings by quartiles of RDW**

	Group I N = 607 <13.1%	Group II N = 574 13.1 ≥ and <13.6%	Group III N = 663 13.6% ≥ and <14.1%	Group IV N = 706 ≥14.1 %	P value
RBC (mln/mm <sup>3</sup> )	4.5 ± 0.4	4.5 ± 0.5	4.5 ± 0.5	4.5 ± 0.5	0.02
HGB (mmol/l)	8.7 ± 0.8	8.6 ± 0.9	8.6 ± 0.8	8.3 ± 1.0	<0.0001
HCT (%)	40.4 ± 3.4	40.6 ± 4.3	40.8 ± 3.8	39.8 ± 4.4	<0.0001
MCV (mm <sup>3</sup> )	90.6 ± 3.9	89.0 ± 3.8	90.5 ± 4.3	89.9 ± 5.6	0.01
RDW (%)	12.6 ± 0.4	13.3 ± 0.1	13.8 ± 0.2	15.0 ± 1.2	<0.0001
WBC (tys/mm <sup>3</sup> )	7.1 ± 1.9	7.3 ± 2.0	7.4 ± 2.6	7.4 ± 2.2	0.17
PLT (tys/mm <sup>3</sup> )	211.3 ± 51.3	210.0 ± 59.4	207.4 ± 60.6	213.3 ± 73.7	0.19
Creatinine (μmol/l)	79.8 ± 32.6	80.3 ± 22.8	83.2 ± 24.7	89.8 ± 48.1	<0.0001
GFR (ml/min/1.73 m <sup>2</sup> )	90.0 ± 21.9	89.4 ± 25.5	85.5 ± 24.2	82.4 ± 26.5	<0.0001
Sodium (mmol/l)	138.5 ± 2.6	138.3 ± 2.8	138.7 ± 2.64	138.5 ± 2.8	0.09
Glucose (mmol/l)	6.2 ± 2.0	6.1 ± 2.0	6.0 ± 1.6	5.9 ± 1.7	0.18
Cholesterol (mmol/l)	4.3 ± 1.1	4.5 ± 1.2	4.4 ± 1.1	4.5 ± 1.3	0.08

RBC – red blood cells, HGB – hemoglobin, HCT – hematocrit, MCV – mean corpuscular volume, RDW – red cell distribution width, WBC – white blood cells, PLT – platelets, GFR – glomerular filtration rate.

## Results

### Baseline characteristics of the entire population

The baseline clinical characteristics for the entire population are shown in Table 1. In general, patients with the highest RDW values were older and more often burdened with diabetes, heart failure, CKD, COPD and PVD. Moreover, patients with higher RDW values had higher heart rates and lower ejection fractions. Not surprisingly, the lowest hemoglobin values were observed in patients with the highest RDW values (Table 2). The prescribed treatments at discharge reflected differences in comorbidities: more nitrates and diuretics were prescribed in patients with the highest RDW values (Table 3).

### Survival analysis and predictors of outcome

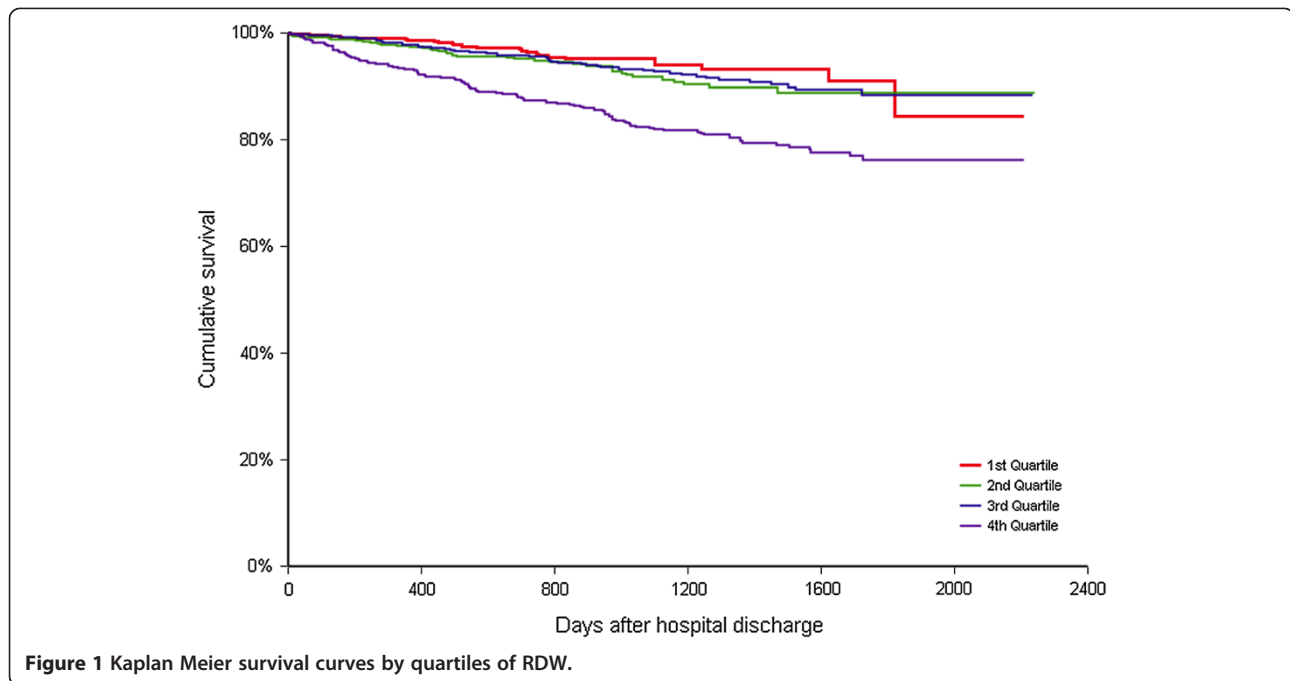
During the observation period, there were 233 reported deaths. Mortality in quartiles 1 to 3 was significantly lower

as compared with quartile 4 (quartile 1 – 26 (4.3%); quartile 2 – 39 (6.8%); quartile 3–48 (7.3%); quartile 4–120 (17.1%),  $p < 0.0001$ , respectively) Figure 1. RDW was highly significantly associated with mortality in the entire cohort and in a subset of patients stratified by age, gender, anemia status, CKD, diabetes and heart failure (Table 4). Adding RDW to model based on clinical variables, ejection fraction hemodynamic data creatinine, and MCV resulted significantly improved the model ( $p < 0.001$ ) although Harrell's-C statistic increased only slightly from 0.76 (95% CI, 0.69÷0.82) to 0.77 (95% CI, 0.70÷0.83). Adding RDW to model based on clinical, hemodynamic and laboratory parameters (including MCV) however did not change IDI significantly (IDI – 0.019 95% CI: – 0.005 ÷ 0.051,  $p = 0.120$ ). There was also non-significant change in the risk of death predicted by the models with and without RDW (NRI – 0.251 95% CI: – 0.163 ÷ 0.512  $p = 0.213$ ).

**Table 3 Prescribed treatment at discharge by quartiles of RDW**

	Group I N = 607 <13.1%	Group II N = 574 13.1 ≥ and <13.6%	Group III N = 663 13.6% ≥ and <14.1%	Group IV N = 706 ≥14.1%	P value
Aspirin	601 (99.0)	569 (99.1)	658 (99.2)	693 (98.2)	0.21
Clopidogrel/Thienopiridines	607 (100)	572 (99.7)	658 (99.2)	699 (99.0)	0.25
ACE-I/ARB	585 (96.4)	539 (93.9)	622 (93.8)	641 (90.8)	0.0006
Beta-blockers	581 (95.7)	555 (96.7)	630 (95.0)	671 (95.0)	0.44
Calcium channel blockers	106 (17.5)	82 (14.3)	100 (15.1)	112 (15.9)	0.47
Diuretics	203 (33.4)	194 (33.8)	229 (34.5)	315 (44.6)	<0.0001
Nitrates	121 (19.9)	166 (28.9)	223 (33.6)	233 (33.0)	<0.0001
VKA	23 (3.8)	32 (5.6)	47 (7.1)	83 (11.8)	<0.0001

ACE-I – angiotensin converting enzyme inhibitors, ARB – angiotensin receptor blockers, VKA – vitamin K antagonists.



**Discussion**

There are two main findings of this study. First, with increasing values of RDW, there is an increase in the rate of patients with serious comorbidities such as COPD, PVD, diabetes treated with insulin, atrial fibrillation and heart failure in the entire population. Second, the RDW was associated with mortality, even after adjusting for clinical echocardiographic and hemodynamic variables in the whole population and in various subgroups. Mortality in the patients with the highest RDW values was almost 4-fold higher than in patients with the lowest RDW values. Similar results were obtained by Fatemi O. and Tonelli M. et al., who observed a graded relationship between RDW quartiles and mortality in patients with various forms of coronary artery disease [4,11], and by Patel V.K., who reported an increase in mortality across RDW quintiles in the general population [18]. In a recent study, Ren H. et al. reported that similar trends of mortality and RDW may be present in patients with stable coronary artery disease because they registered 8 deaths (2.27%) vs. 2 deaths (0.51%) [9] in patients with RDW values in the highest and lowest RDW quartiles, respectively. Our analysis of a larger population with a longer follow-up period and 233 registered events confirms those findings.

**RDW as a marker of disease burden**

An increased percentage of patients with serious comorbidities compared to patients with lower RDW values suggests that RDW is a universal marker of disease burden. Data from analyses referring to the wide spectrum

of diseases seem to confirm that finding [3,18-28]. Associations between higher RDW levels and CKD are quite easy to explain because anemia, which is frequently found in patients with impaired renal function [29,30], is associated with increased RDW values. Moreover, RDW values are often used for anemia classification [31]. An explanation similar to that for CKD may hold for heart failure because Jankowska E et al. showed

**Table 4 Adjusted\* hazard ratios of RDW [per 1% increase] in whole population and in subgroups**

	Hazard ratio	95% CI	P value
Whole group	1.23	1.13-1.35	<0.0001
Females	1.31	1.06-1.62	0.01
Males	1.22	1.1-1.34	0.0001
≥75 years	1.36	1.05-1.78	0.02
<75 years	1.21	1.09-1.33	0.0003
Anemia	1.17	1.02-1.34	0.02
Without anemia	1.37	1.19-1.58	<0.0001
With CKD	1.49	1.32-1.82	0.0001
Without CKD	1.16	1.04-1.29	0.009
Diabetes	1.23	1.08-1.4	0.002
Without diabetes	1.27	1.12-1.46	0.0003
Heart failure	1.20	1.04-1.39	0.01
Without heart failure	1.39	1.07-1.8	0.01

Adjusted for age, sex, heart failure, atrial fibrillation, hypertension, previous MI, previous PCI, previous CABG, previous SCD, PVD, previous stroke, diabetes, lipid abnormalities, obesity, COPD, CKD, smoking, NYHA and CCS class, heart rate, blood pressure, ejection fraction, number and type(s) of stent implanted, number of PCI vessels, hemoglobin, MCV.



that iron deficiency develops during the progression of heart failure [32]. In our study, the frequency of heart failure and the percentage of patients with advanced heart failure symptoms were higher in patients with RDW values within the 4<sup>th</sup> quartile. The association of RDW with other comorbidities such as COPD, diabetes and peripheral vascular disease may be more difficult to elucidate. Possible explanations come from publications describing the increased inflammatory status and increased oxidative stress in those conditions [33-38]. Therefore, in more advanced stages of atherosclerosis, COPD and diabetes, the detrimental effects of oxidative stress on erythrocyte membrane fluidity affects the lifespan of red blood cells, which in turn leads to higher RDW values [39]. However, Fornal M et al. and Lippi G et al. [40,41] reported the existence of a potential link between inflammatory biomarkers and RDW values that may also be of importance, because the inflammation may impair iron metabolism and inhibit both the production of and the response to erythropoietin [18,42]. Veranna V. et al. reported that RDW values of 12.6% and increased CRP levels above 3 mg/dl are associated with a higher risk of mortality in a cohort free of coronary heart disease [43]. Another interesting observation is the lower frequency of multivessel coronary artery disease (MVD) in patients with RDW values in the 1<sup>st</sup> quartile compared to the other quartiles, which is in concordance with results of Isik T. et al. and MA F-L [44,45]. Those findings may indirectly confirm the association of increasing values of RDW with extensiveness and possibly the duration of the atherosclerotic process and the role of RDW as a marker of the disease process.

#### **Red blood cell heterogeneity as a potential causative factor**

The association between RDW values and comorbidities does not entirely explain the increased mortality in patients with the highest RDW values because RDW remained highly significantly associated with mortality after adjusting for clinical echocardiographic, hemodynamic and laboratory parameters in the entire cohort and in subgroups, although in our study it did not improve risk prediction as estimated by NRI and IDI measures. There have been however studies showing that RDW improves prediction of bleeding after acute coronary syndromes [46] and mortality in kidney transplant recipients [47].

Currently, it is not clear why higher RDW levels are so strongly associated with worse long term prognoses in various diseases. Luneva O.G. et al. provided insight into the pathophysiology of the relationship between mortality and RDW values by finding a significant correlation between RDW values and the cholesterol content of erythrocyte membranes, which also determines erythro-

cyte membrane fluidity [39]. It has also been reported that greater variation in RDW is associated with impaired blood flow through the microvascular system, which may cause tissue hypoxia, even in patients without anemia [48].

#### **Strengths and limitations**

A limitation of this study is the retrospective design. Nonetheless, the potential disadvantages of this retrospective analysis are diminished by the fact that the patient data are inputted into an electronic database from report forms filled out by the attending physician upon the patient's admission to our center. Other limitations include a lack of iron status and other biomarkers such as high sensitivity troponins.

Strengths of this study include large cohort, detailed data on clinical, echocardiographic hemodynamic and laboratory parameters, and long follow-up period with very little patients lost to follow-up.

#### **Conclusions**

RDW is an independent predictor of mortality in patients with stable coronary artery disease undergoing stent implantation. Higher RDW values correspond with a higher comorbidity burden and higher mortality in a stepwise fashion, even within the RDW reference range.

#### **Abbreviations**

BMI: Body mass index; BMS: Bare metal stent; CABG: Coronary artery bypass graft; CCS: Canadian Cardiovascular Society; CHD: Coronary heart disease; CKD: Chronic kidney disease; COPD: Chronic obstructive pulmonary disease; DBP: Diastolic blood pressure; FH: Family history CHD; GFR: Glomerular filtration rate; HCT: Hematocrit; HGB: Hemoglobin; HR: Heart rate; MCV: Mean corpuscular volume; MI: Myocardial infarction; MVD: Multivessel disease; NYHA: New York Heart Association; PCI: Percutaneous coronary intervention; PDW: Platelet distribution width; PVD: Peripheral vascular disease; RBC: Red blood cells; RDW: Red cell distribution width; SBP: Systolic blood pressure; SCD: Sudden cardiac death; TIA: Transient ischemic attack; WBC: White blood cells.

#### **Competing interests**

The authors declare that they have no competing interests.

#### **Authors' contributions**

TO - conception and design of the study, statistical analysis and interpretation of data, drafting the article; JS - design of the manuscript, help in drafting manuscript, interpretation of data. MH, AL, KW, KD MGa - acquisition and interpretation of data (coronary angiography records), revising the manuscript for intellectual content MGi - acquisition and interpretation of data (coronary angiography records), revising the manuscript for intellectual content. JW - design of the manuscript, interpretation and analysis of data, help in drafting the manuscript, AW - interpretation of data revising the manuscript for intellectual content. AK, ARG, AS - acquisition of data, revising the manuscript for intellectual content. LP - Design of the study, interpretation of data, revising the article for intellectual content. All authors read and approved the final manuscript.

#### **Acknowledgements**

We would like to thank Rafał Reguła, Roch Pakuła, Kamil Bujak, Małgorzata Goner, Marcin Gawlita, Paweł Przybyło and Seweryn Król for imputing coronary angiography data into electronic database. We would like to thank attending physicians for fulfilling report forms for all admitted patients. We would like to thank Assist. Prof. Kryspin Mirota for review of the manuscript for its statistical content.

#### Funding source

National Science Center – Dec-2011/01/D/NZ5/04387.

#### Author details

<sup>1</sup>Ilrd Chair and Department of Cardiology, Silesian Centre for Heart Diseases, Medical University of Silesia in Katowice, Medical Faculty in Zabrze, Ul. Marii Skłodowskiej Curie 9, 41-800, Zabrze, Poland. <sup>2</sup>Department of Medical Biology, Medical University of Silesia in Katowice, Medical Faculty in Zabrze, Ul. Marii Skłodowskiej Curie 9, 41-800, Zabrze, Poland.

Received: 13 October 2013 Accepted: 1 December 2013

Published: 10 December 2013

#### References

1. Aung N, Ling HZ, Cheng AS, et al: Expansion of the red cell distribution width and evolving iron deficiency as predictors of poor outcome in chronic heart failure. *Int J Cardiol* 2013, **168**(3):1997–2002. doi: 10.1016/j.ijcard.2012.12.091.
2. Emans ME, Gaillard CAJM, Pfister R, et al: Red cell distribution width is associated with physical inactivity and heart failure, independent of established risk factors, inflammation or iron metabolism; the EPIC—Norfolk study. *Int J Cardiol* 2013, **168**(4):3550–3555. doi: 10.1016/j.ijcard.2013.05.002. Epub 2013 May 24.
3. Nabais S, Losa N, Gaspar A, et al: Association between red blood cell distribution width and outcomes at six months in patients with acute coronary syndromes. *Rev Port Cardiol* 2009, **28**(9):905–924.
4. Fatemi O, Paraniham J, Rainow A, et al: Red cell distribution width is a predictor of mortality in patients undergoing percutaneous coronary intervention. *J Thromb Thrombolysis* 2013, **35**(1):57–64.
5. Arbel Y, Birati EY, Finkelstein A, et al: Red blood cell distribution width and 3-year outcome in patients undergoing cardiac catheterization. *J Thromb Thrombolysis* 2013. [Epub ahead of print] ACCESSED ON 04.12.2013.
6. Celikbilek A, Zazarisz G, Atalay T, Tanik N: Red cell distribution width in migraine. *Int J Lab Hematol* 2013, **35**(6):620–628. doi: 10.1111/ijlh.12100. Epub 2013 May 7.
7. Afonso L, Zalawadiya SK, Veeranna V, Panaich SS, Niraj A, Jacob S: Relationship between red cell distribution width and microalbuminuria: a population-based study of multiethnic representative US adults. *Nephron Clin Pract* 2011, **119**(4):c277–c282.
8. Fujita B, Strodthoff D, Fritzenwanger M, et al: Altered red blood cell distribution width in overweight adolescents and its association with markers of inflammation. *Pediatr Obes* 2012, **8**(5):385–391. doi: 10.1111/j.2047-6310.2012.00111.x. Epub 2012 Dec 13.
9. Ren H, Hua Q, Quan M, et al: Relationship between the red cell distribution width and the one-year outcomes in Chinese patients with stable Angina Pectoris. *Intern Med* 2013, **52**(16):1769–1774.
10. Tsuboi S, Miyauchi K, Kasai T, et al: Impact of red blood cell distribution width on long-term mortality in diabetic patients after percutaneous coronary intervention. *Circ J* 2013, **77**(2):456–461.
11. Tonelli M, Sacks F, Arnold M, Moye L, Davis B, Pfeffer M: Relation between red blood cell distribution width and cardiovascular event rate in people with coronary disease. *Circulation* 2008, **117**(2):163–168.
12. Harrell Jr FE, with contributions from Charles Dupont and many others: *Hmisc: Harrell Miscellaneous*. R package version 3.13-0. http://CRAN.R-project.org/package=Hmisc.
13. Pencina MJ, D'Agostino RB, Steyerberg EW: Extensions of net reclassification improvement calculations to measure usefulness of new biomarkers. *Stat Med* 2011, **30**(1):11–21.
14. Pencina MJ, D'Agostino RB, Vasan RS: Evaluating the added predictive ability of a new marker: from area under the ROC curve to reclassification and beyond. *Stat Med* 2008, **27**(2):157–172. discussion 207–12.
15. Beleigoli AM, Boersma E, de FH DM, Vidigal PG, Lima-Costa MF, Ribeiro AL: C-reactive protein and B-type natriuretic Peptide yield either a non-significant or a modest incremental value to traditional risk factors in predicting long-term overall mortality in older adults. *PLoS One* 2013, **8**(9):e75809.
16. Hajime Uno and Tianxi Cai, 2013: *survIDINRI: I and N, Survival comparing competing risk prediction models with censored, 1.1-1. data*; 2013. R package version 1.1-1. http://CRAN.R-project.org/package=survIDINRI.
17. Statistical RCT: *RA language and environment for computing*. Vienna: R Foundation for Statistical Computing; 2013. http://www.R-project.org/.
18. Patel KV, Ferrucci L, Ershler WB, Longo DL, Guralnik JM: Red blood cell distribution width and the risk of death in middle-aged and older adults. *Arch Intern Med* 2009, **169**(5):515–523.
19. Yu S, Cui H, Qin M, et al: Impact of red cell distribution width on outcome of 16 681 patients with chronic systolic heart failure. *Zhonghua Xin Xue Guan Bing Za Zhi* 2012, **40**(3):237–242.
20. Ujszaszi A, Molnar MZ, Czira ME, Novak M, Mucsi I: Renal function is independently associated with red cell distribution width in kidney transplant recipients: a potential new auxiliary parameter for the clinical evaluation of patients with chronic kidney disease. *Br J Haematol* 2013, **161**(5):715–725.
21. Ozsus S, Abul Y, Gunaydin S, Orem A, Ozlu T: Prognostic value of red cell distribution width in patients with pulmonary embolism. *Clin Appl Thromb Hemost* 2012. [Epub ahead of print] ACCESSED ON 04.12.2013.
22. Seyhan EC, Ozgöl MA, Tutar N, Omür I, Uysal A, Altın S: Red blood cell distribution and survival in patients with chronic obstructive pulmonary disease. *COPD* 2013, **10**(4):416–424. doi: 10.3109/15412555.2012.758697. Epub 2013 Mar 28.
23. Balta S, Demirkol S, Cakar M, Ardic S, Celik T, Demirbas S: Red cell distribution width: a novel and simple predictor of mortality in acute pancreatitis. *Am J Emerg Med* 2013, **31**(6):991–992. doi: 10.1016/j.ajem.2013.02.037. Epub 2013 Apr 17.
24. Ford HC, Toomath RJ, Carter JM, Delahunty JW, Fagerstrom JN: Mean platelet volume is increased in hyperthyroidism. *Am J Hematol* 1988, **27**(3):190–193.
25. Zalawadiya SK, Veeranna V, Panaich SS, Afonso L: Red cell distribution width and risk of peripheral artery disease: analysis of National Health and Nutrition Examination Survey 1999–2004. *Vasc Med* 2012, **17**(3):155–163.
26. Sincer I, Zorlu A, Yilmaz MB, et al: Relationship between red cell distribution width and right ventricular dysfunction in patients with chronic obstructive pulmonary disease. *Heart Lung* 2012, **41**(3):238–243.
27. Montagnana M, Cervellini G, Meschi T, Lippi G: The role of red blood cell distribution width in cardiovascular and thrombotic disorders. *Clin Chem Lab Med* 2012, **50**(4):635–641.
28. Jo YH, Kim K, Lee JH, et al: Red cell distribution width is a prognostic factor in severe sepsis and septic shock. *Am J Emerg Med* 2013, **31**(3):545–548.
29. Hsu CY, Bates DW, Kuperman GJ, Curhan GC: Relationship between hematocrit and renal function in men and women. *Kidney Int* 2001, **59**(2):725–731.
30. Kitai Y, Ozasa N, Morimoto T, et al: Prognostic implications of anemia with or without chronic kidney disease in patients undergoing elective percutaneous coronary intervention. *Int J Cardiol* 2013, **168**(6):5221–5228. doi: 10.1016/j.ijcard.2013.08.029. Epub 2013 Aug 16.
31. Karnad A, Poskitt TR: The automated complete blood cell count. Use of the red blood cell volume distribution width and mean platelet volume in evaluating anemia and thrombocytopenia. *Arch Intern Med* 1985, **145**(7):1270–1272.
32. Jankowska EA, Malyszko J, Ardehali H, et al: Iron status in patients with chronic heart failure. *Eur Heart J* 2013, **34**(11):827–834.
33. Vanfleteren LEGW, Spruit MA, Groenen M, et al: Clusters of comorbidities based on validated objective measurements and systemic inflammation in patients with chronic obstructive pulmonary disease. *Am J Respir Crit Care Med* 2013, **187**(7):728–735.
34. Van den Borst B, Gosker HR, Koster A, et al: The influence of abdominal visceral fat on inflammatory pathways and mortality risk in obstructive lung disease. *Am J Clin Nutr* 2012, **96**(3):516–526.
35. Kirkham PA, Barnes PJ: Oxidative stress in COPD. *Chest* 2013, **144**(1):266–273.
36. Vaziri ND: Role of dyslipidemia in impairment of energy metabolism, oxidative stress, inflammation and cardiovascular disease in chronic kidney disease. *Clin Exp Nephrol* 2013 [Epub ahead of print].
37. Gardner AW, Parker DE, Montgomery PS, et al: Impaired vascular endothelial growth factor A and inflammation in patients with peripheral artery disease. *Angiology* 2013. [Epub ahead of print] ACCESSED ON 04.12.2013.
38. Cai L, Kang YJ: Oxidative stress and diabetic cardiomyopathy: a brief review. *Cardiovasc Toxicol* 2001, **1**(3):181–193.

39. Luneva OG, Brazhe NA, Maksimova NV, et al: Ion transport, membrane fluidity and haemoglobin conformation in erythrocyte from patients with cardiovascular diseases: role of augmented plasma cholesterol. *Pathophysiology* 2007, **14**(1):41–46.
40. Fornal M, Wizner B, Cwynar M, et al: Association of red blood cell distribution width, inflammation markers and morphological as well as rheological erythrocyte parameters with target organ damage in hypertension. *Clin Hemorheol Microcirc* 2013, doi: 10.3233/CH-131745.
41. Lippi G, Targher G, Montagnana M, Salvagno GL, Zoppini G, Guidi GC: Relationship between red blood cell distribution width and kidney function tests in a large cohort of unselected outpatients. *Scand J Clin Lab Invest* 2008, **68**(8):745–748.
42. Weiss G, Goodnough LT: Anemia of chronic disease. *N Engl J Med* 2005, **352**(10):1011–1023.
43. Veeranna V, Zalawadiya SK, Panaich S, Patel KV, Afonso L: Comparative analysis of red cell distribution width and high sensitivity C-reactive protein for coronary heart disease mortality prediction in multi-ethnic population: Findings from the 1999–2004 NHANES. *Int J Cardiol* 2013, **168**(6):5156–5161. doi: 10.1016/j.ijcard.2013.07.109. Epub 2013 Sep 7.
44. Isik T, Kurt M, Ayhan E, et al: Relation of red cell distribution width with presence and severity of coronary artery ectasia. *Clin Appl Thromb Hemost* 2012, **18**(5):441–447.
45. Ma F-L, Li S, Li X-L, et al: Correlation of red cell distribution width with the severity of coronary artery disease: a large Chinese cohort study from a single center. *Chin Med J (Engl)* 2013, **126**(6):1053–1057.
46. Fatemi O, Torguson R, Chen F, et al: Red cell distribution width as a bleeding predictor after percutaneous coronary intervention. *Am Heart J* 2013, **166**(1):104–109.
47. Mucsi I, Ujszaszi A, Czira ME, Novak M, Molnar MZ: Red cell distribution width is associated with mortality in kidney transplant recipients. *Int Urol Nephrol* 2013. [Epub ahead of print] PMID:23959402.
48. Patel KV, Mohanty JG, Kanapuru B, Hesdorffer C, Ershler WB, Rifkind JM: Association of the red cell distribution width with red blood cell deformability. *Adv Exp Med Biol* 2013, **765**:211–216.

doi:10.1186/1471-2261-13-113

Cite this article as: Osadnik et al.: Red cell distribution width is associated with long-term prognosis in patients with stable coronary artery disease. *BMC Cardiovascular Disorders* 2013 **13**:113.

Submit your next manuscript to BioMed Central and take full advantage of:

- Convenient online submission
- Thorough peer review
- No space constraints or color figure charges
- Immediate publication on acceptance
- Inclusion in PubMed, CAS, Scopus and Google Scholar
- Research which is freely available for redistribution

Submit your manuscript at  
www.biomedcentral.com/submit

